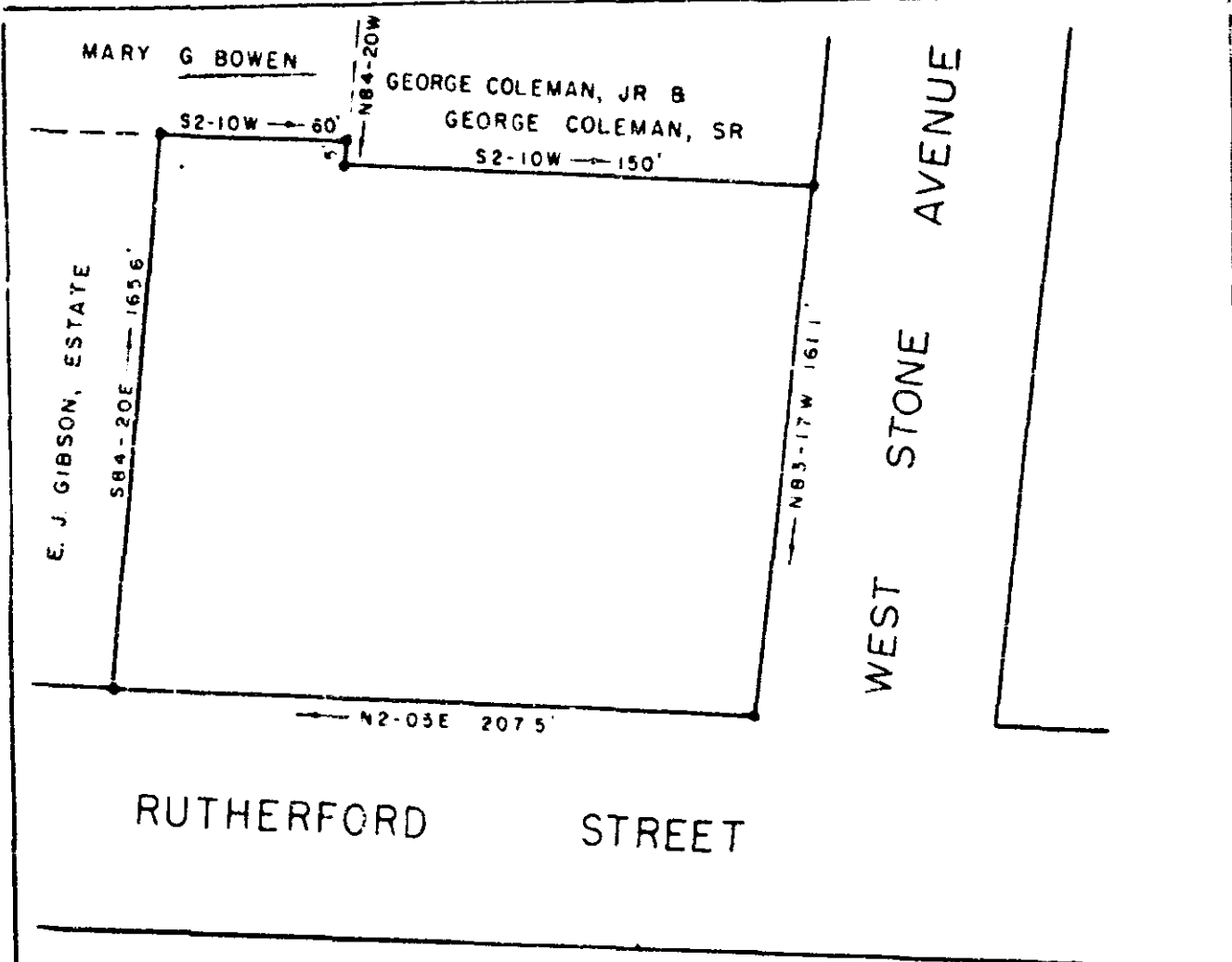


F 16035 Filed This 7 day of Jan 1969

And Recorded in Vol. 222 Page 177 at 12:31 P.M.

Ollie Jamison

Register Mesne Conveyance Greenville County, S. C.



PROPERTY OF

HESS REALTY CORPORATION

GREENVILLE, S. C.

Scale 1" = 50' December 19, 1968

DALTON B NEVES, ENGINEERS
GREENVILLE, S. C.

16035

FILED
GREENVILLE CO. S. C.
JAN 7 12 31 PM 1969
OLLIE JAMISON
R. W. S.

FB 378 222-177

Iron Pins at all Corners