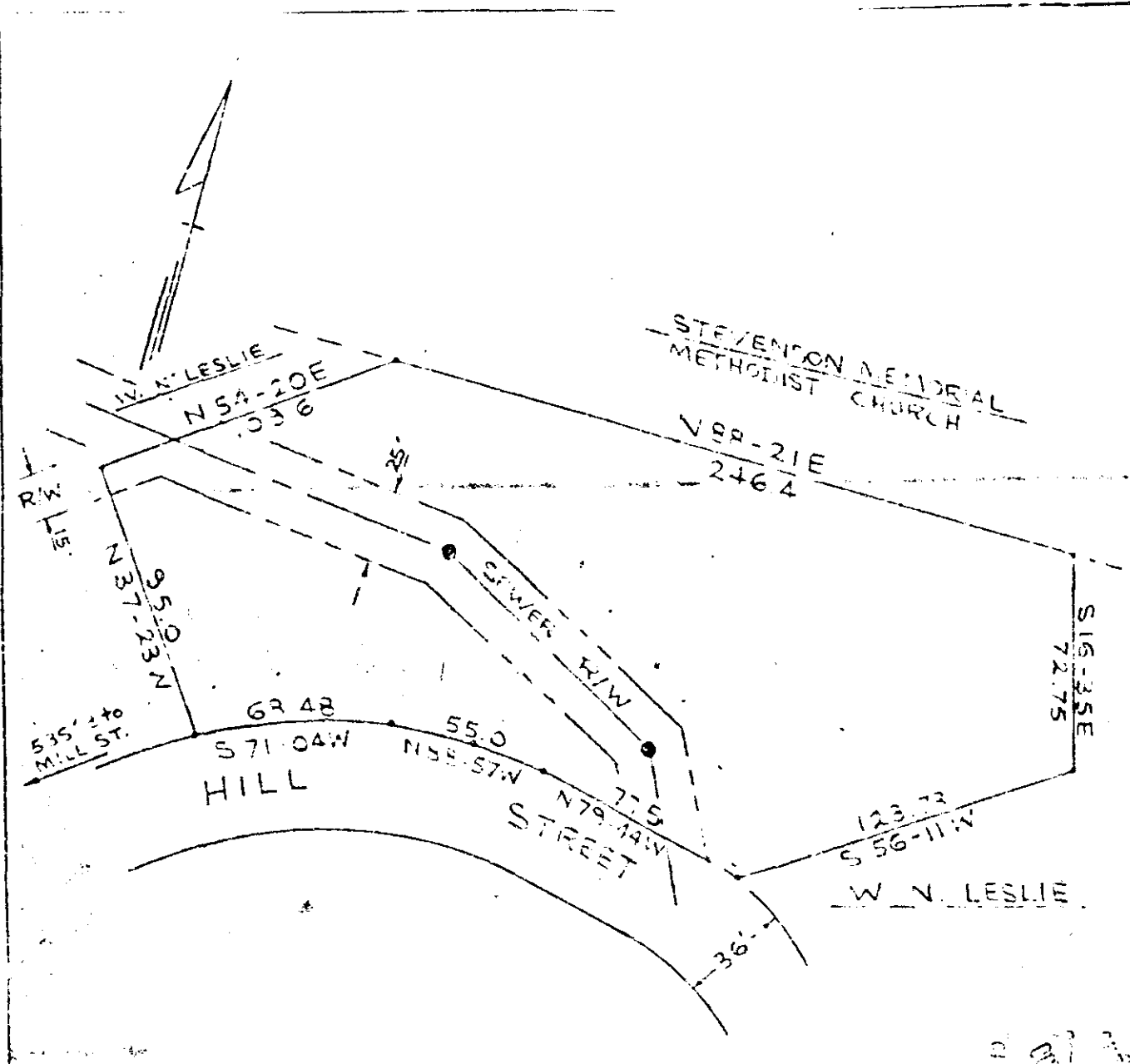


Lot 1000 222 1898

#9587 Filed This 18 day of Oct. 1968
And Recorded in Vol. 222 Page 21 at 1:21 P.
Ollie Farnsworth
Register Mesne Conveyance Greenville County, S. C.



SURVEY FOR
DANIEL L. CUNNINGHAM
GREENVILLE CO., S.C.
SCALE 1"=50' SEPT 27 1968

THIS PLAT IS NOT A SUBDIVISION
AS DEFINED BY THE GREENVILLE
COUNTY SUBDIVISION REGULATIONS.
10/16/68 *Arthur V. Smith*
Chairman, Secretary, or Director of
Planning. 1
Greenville County Planning Commission

507
222-21
9587

PIEDMONT ENGINEERS AND ARCHITECTS
GREENVILLE, S. C.

RECORDED
OCT 18 1968
GREENVILLE COUNTY S.C.