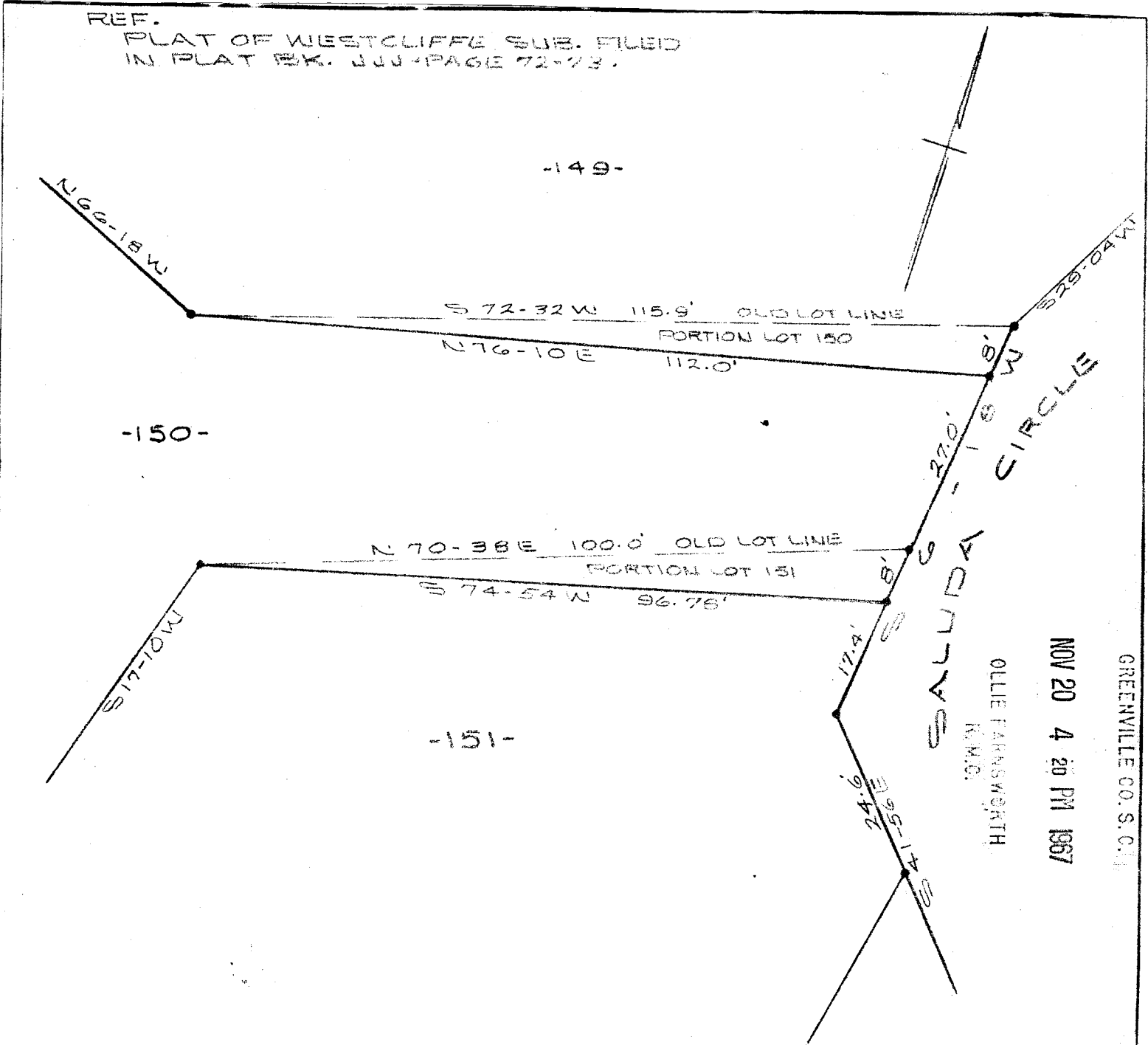


#14605 Filed This 20 day of Nov 1967
 And Recorded in Vol. VVV Page 103 at 4:20 P.M.
 Ollie Farnsworth
 Register Mesne Conveyance Greenville County, S. C.



SURVEY OF
PORTION OF LOTS 149, 150, & 151
WESTCLIFFE SUBDIVISION
 NEAR GREENVILLE, S. C.
 SCALE 1" = 20' JULY 21, 1967

507 already paid
 VVV-103 14605

PIEDMONT ENGINEERS AND ARCHITECTS
 GREENVILLE, S. C.