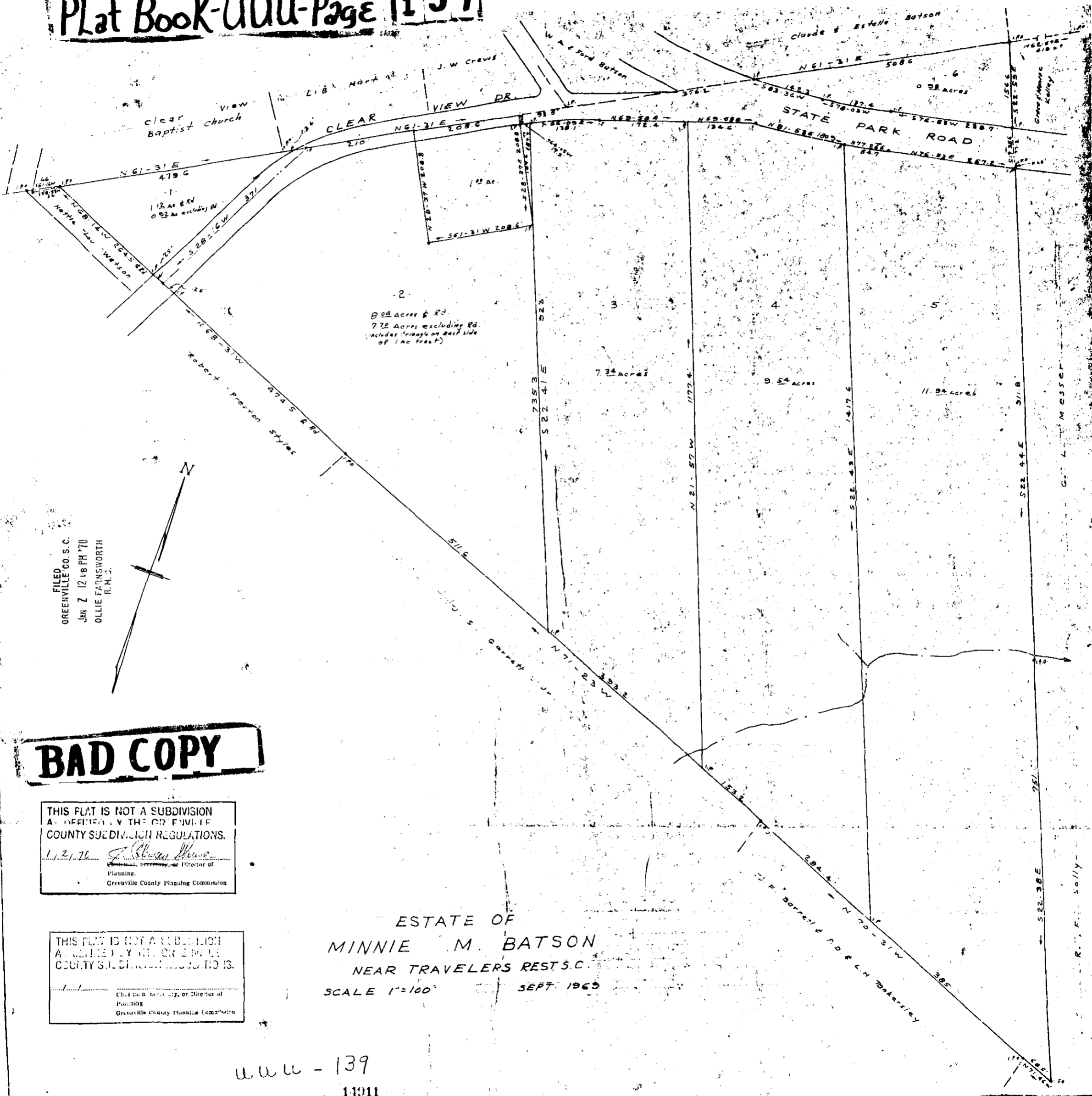


#14911 : Ld This 2 day of Jan 1970  
And Recorded in Vol. 1111 Page 137 : 12:48 P  
Ollie Farnsworth  
Register Meane Conveyance Greenville County, S. C.

# Plat Book-UUU-Page 139



FILED  
GREENVILLE CO. S. C.  
JAN 7 12 48 PM '70  
OLLIE FARNSWORTH  
R.H.S.

**BAD COPY**

THIS PLAT IS NOT A SUBDIVISION  
AS DEFINED BY THE GREENVILLE  
COUNTY SUBDIVISION REGULATIONS.

1/2/70

*J. Stuart Moore*  
Chairman, Secretary, or Director of  
Planning,  
Greenville County Planning Commission

THIS PLAT IS NOT A SUBDIVISION  
AS DEFINED BY THE GREENVILLE  
COUNTY SUBDIVISION REGULATIONS.

Chairman, Secretary, or Director of  
Planning,  
Greenville County Planning Commission

ESTATE OF  
MINNIE M. BATSON  
NEAR TRAVELERS REST S.C.

SCALE 1"=100'

SEPT. 1969

uuu - 139

JAN 2 1970

14911

C. O. Riddle - R.C. L.S. 1347