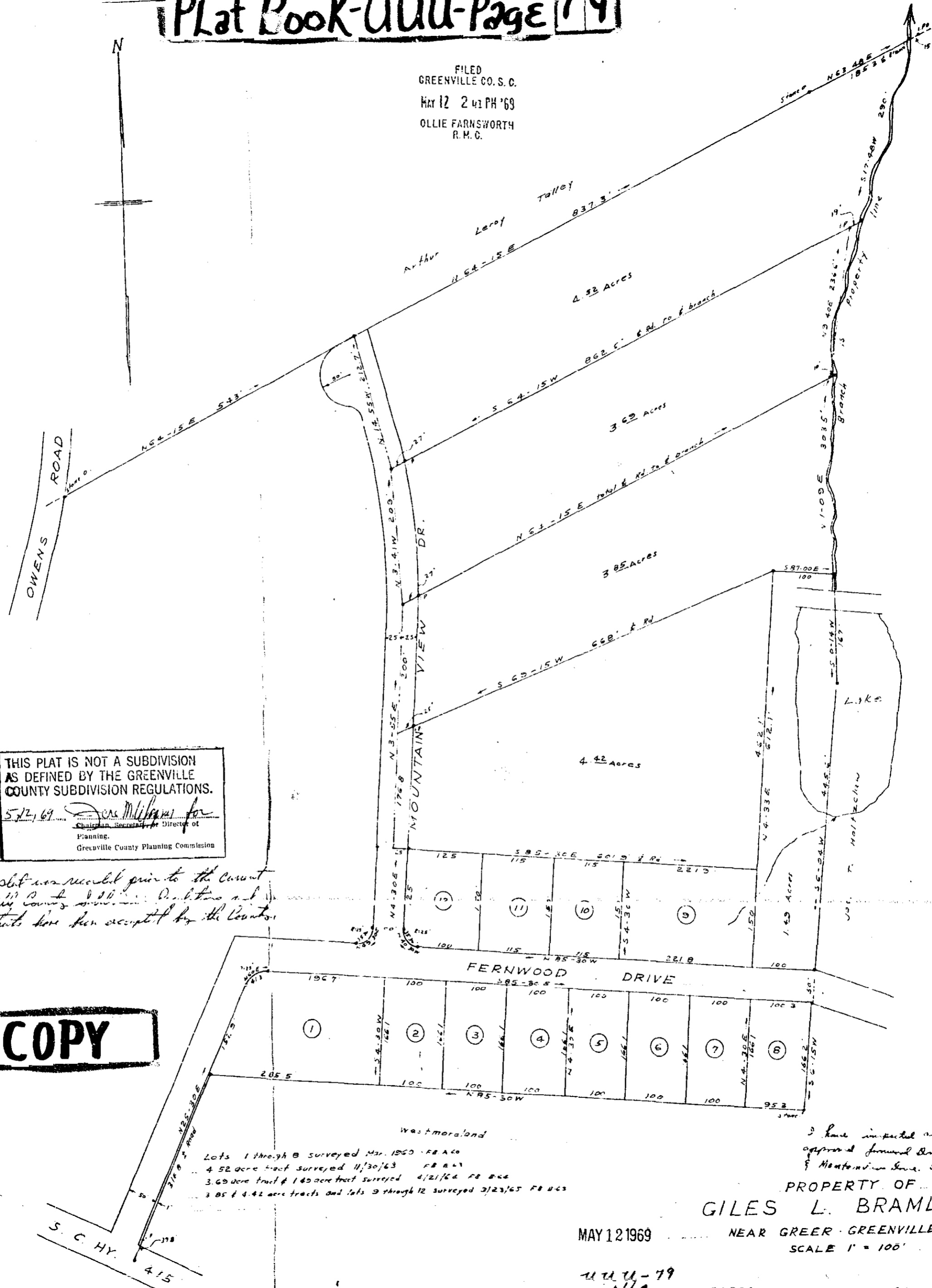


Plat Book-UUU-Page 79

FILED
GREENVILLE CO. S. C.
MAY 12 2 41 PM '69
OLLIE FARNSWORTH
R. M. C.



THIS PLAT IS NOT A SUBDIVISION
AS DEFINED BY THE GREENVILLE
COUNTY SUBDIVISION REGULATIONS.
5/2/69 *Don Williams* for
Chairman, Secretary or Director of
Planning,
Greenville County Planning Commission

*This plat was recorded prior to the current
Greenville County Subdivision Regulations and
the state has been accepted by the County.*

BAD COPY

Westmoreland
Lots 1 through 8 surveyed Mar. 1960 FB A60
4.52 acre tract surveyed 11/30/63 FB A67
3.69 acre tract & 1.69 acre tract surveyed 4/21/64 FB B24
3.85 & 4.42 acre tracts and lots 9 through 12 surveyed 2/23/65 FB B23

I have inspected and
approved forward same
& Montevideo Sine. 5-10-69
PROPERTY OF *W. H. & O. L. Bramlett*
GILES L. BRAMLETT
NEAR GREER - GREENVILLE CO. S.C.
SCALE 1" = 100'

MAY 12 1969

UUU-79
N/C

27021

S. C. Ryall - Rec. # 1392

100 pins at all corners not otherwise marked