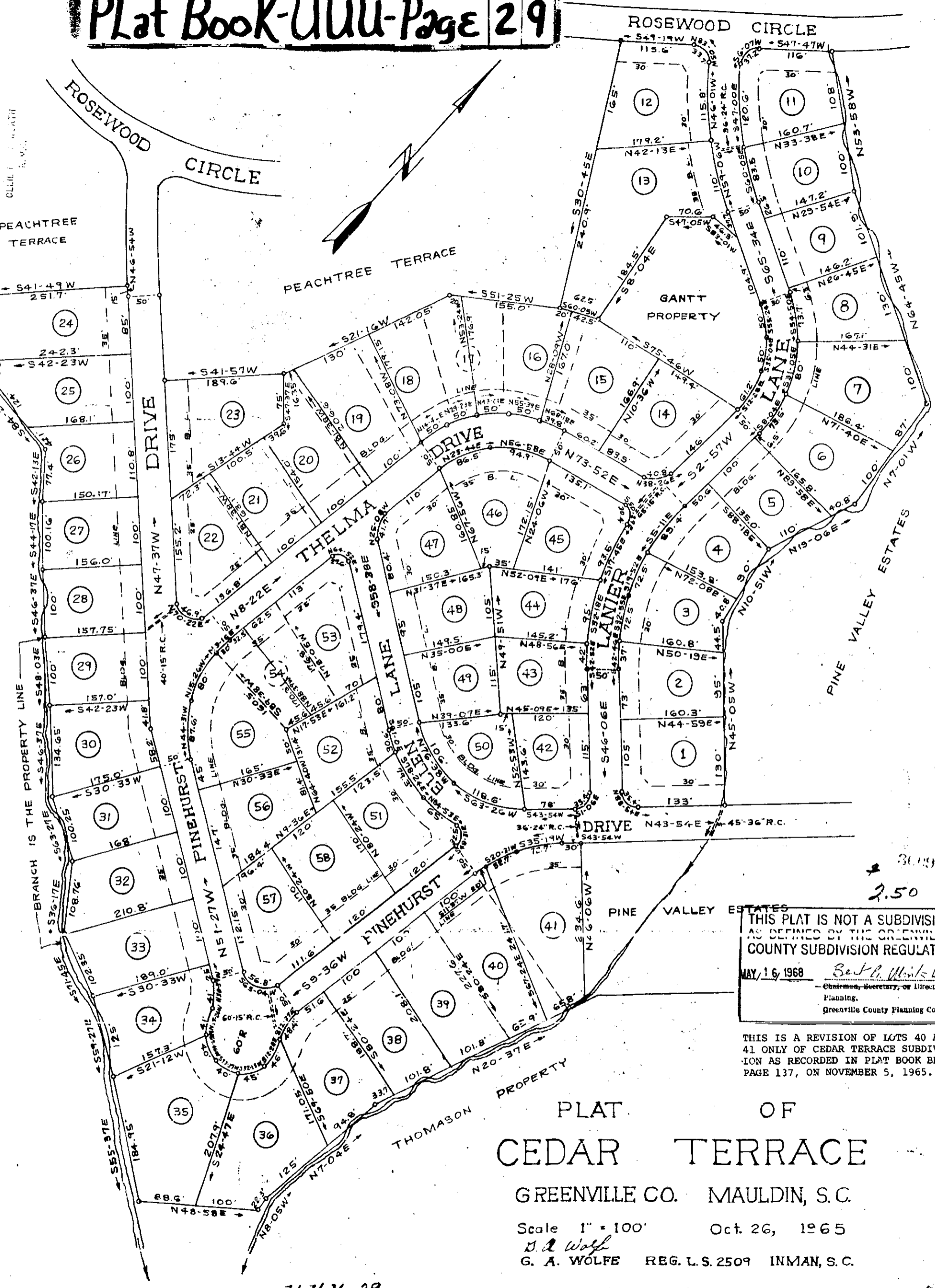


# Plat Book-UUU-Page 29

**BAD COPY**

FILE  
 GREENVILLE CO. S.C.  
 MAY 21 5 15 PM 1968  
 CLERK OF DEEDS

J. H. BLAKELY



30091  
 2.50  
 THIS PLAT IS NOT A SUBDIVISION AS DEFINED BY THE GREENVILLE COUNTY SUBDIVISION REGULATIONS.  
 MAY, 16, 1968 *Ben B. Winkler*  
 Chairman, Secretary, or Director of Planning,  
 Greenville County Planning Commission

THIS IS A REVISION OF LOTS 40 AND 41 ONLY OF CEDAR TERRACE SUBDIVISION AS RECORDED IN PLAT BOOK BBB, PAGE 137, ON NOVEMBER 5, 1965.

## PLAT OF CEDAR TERRACE

GREENVILLE CO. MAULDIN, S. C.  
 Scale 1" = 100' Oct. 26, 1965  
*D. A. Wolfe*  
 G. A. WOLFE REG. L.S. 2509 INMAN, S. C.

ARTHUR F. WALLACE & CHARLES F. DAVIS

OWNERS & DEVELOPER'S

Notes. Iron Pins at all corners.  
 There is a 5ft. easement along all rear and side lot lines for Drainage & Utilities.  
 Field work & Plotting by T. H. Walker Jr.

UUU-29  
 Note: Revision of lots 40 & 41 made May 16, 1968 by T. H. Walker Jr. Reg. L.S. 3182.  
 Note: Revision of lots 15 thru 22 and lots 53, 54 & 55 made Aug. 5, 1967 by T. H. Walker Jr. Reg. L.S. 3182.

REG. L.S. 2509 INMAN, S. C.