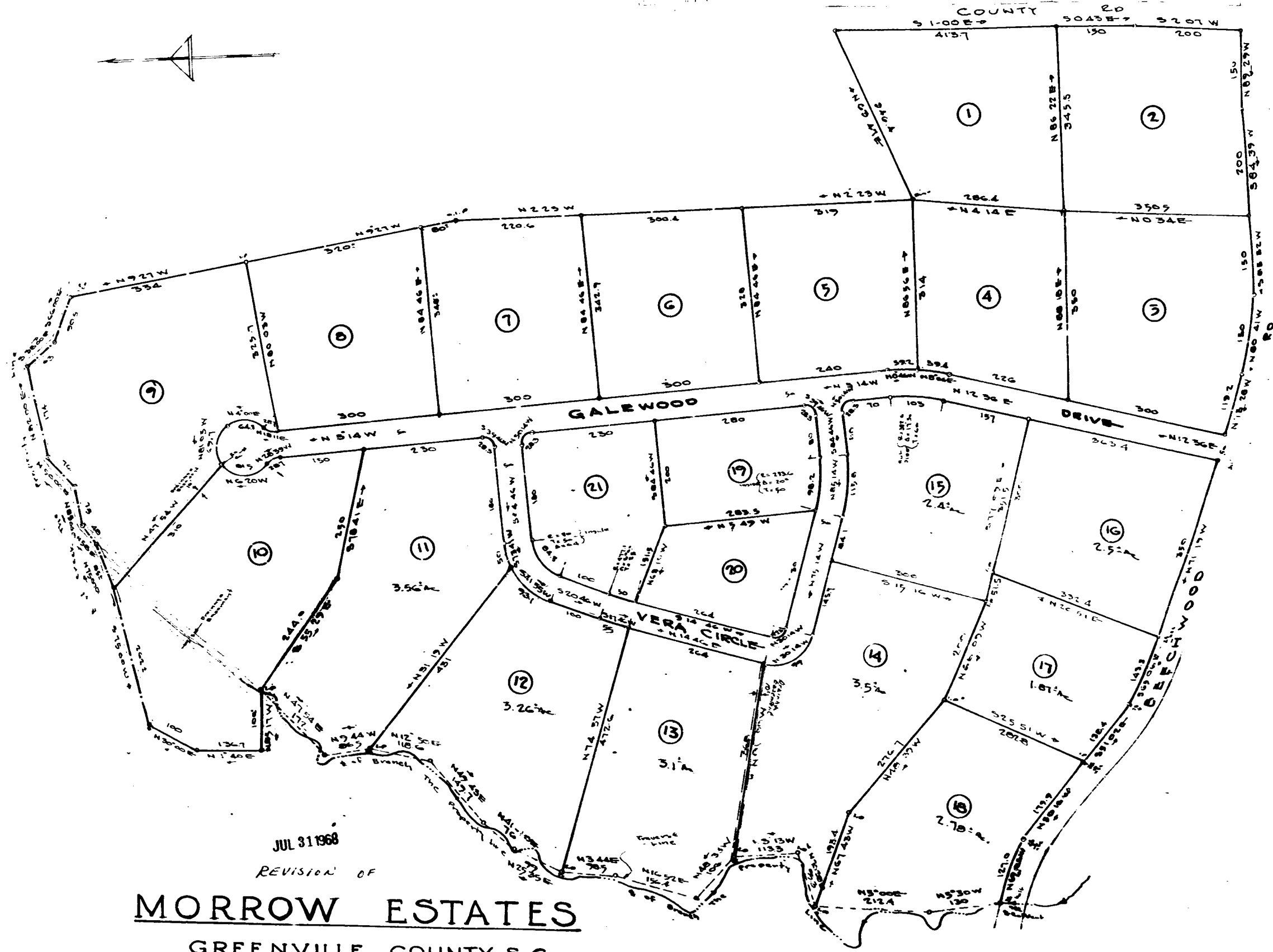
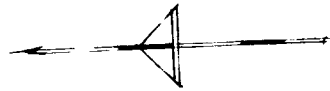


JUL 31 4 34 PM 1966



JUL 31 1966

REVISION OF

## MORROW ESTATES

GREENVILLE COUNTY, S.C.

SCALE 1" = 100' JUNE 1966

THIS PLAT REVISION FOUND IN

PLAT BOOK 000, PAGE 157

3.00

2754

TTT-29

JONES ENGINEERING SERVICES - GREENVILLE, S.C.

THIS PLAT IS NOT A SUBDIVISION AS DEFINED BY THE GREENVILLE COUNTY SUBDIVISION REGULATIONS.

7-27-68 *John Williams, Jr.*  
 Planning,  
 Greenville County Planning Commission

A 2754 Plat Book TTT-Page 29 of 29  
 And recorded in TTT-Page 29 of 29  
 7-27-68  
 Register of Deeds Greenville County, S.C.

44  
 28  
 27