

MAP # 2

W. B. C. EDWARDS ESTATE
O'NEILL TOWNSHIP
GREENVILLE CO. DEPT H CAROLINA
SCALE 1" = 200 FEET
SURVEYED FOR HOWE, HUGHES LAND CO
SEPT. 24, 1946

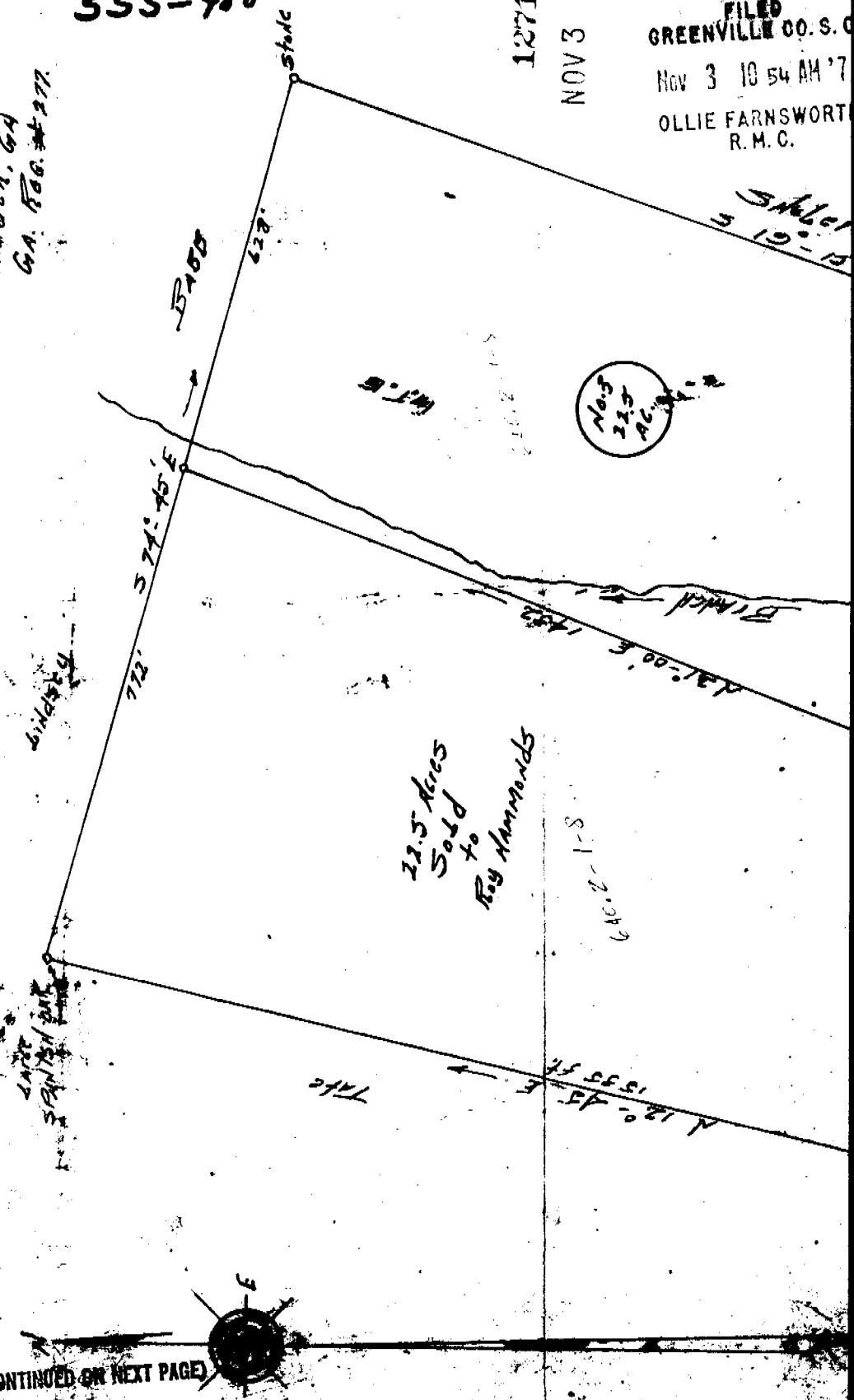
M. L. DUNDON SR.
MILLET, GA
GA. TAG. # 277

555-480

12718
NOV 3 1971

FILED
GREENVILLE CO. S. C.
NOV 3 10 54 AM '71
OLLIE FARNSWORTH
R. M. C.

Sheet
5 19-17



22.5 Acres
Sold
to
Ray Hammonds

646.2-1-8

NOV 3 1971
AC

(CONTINUED ON NEXT PAGE)

