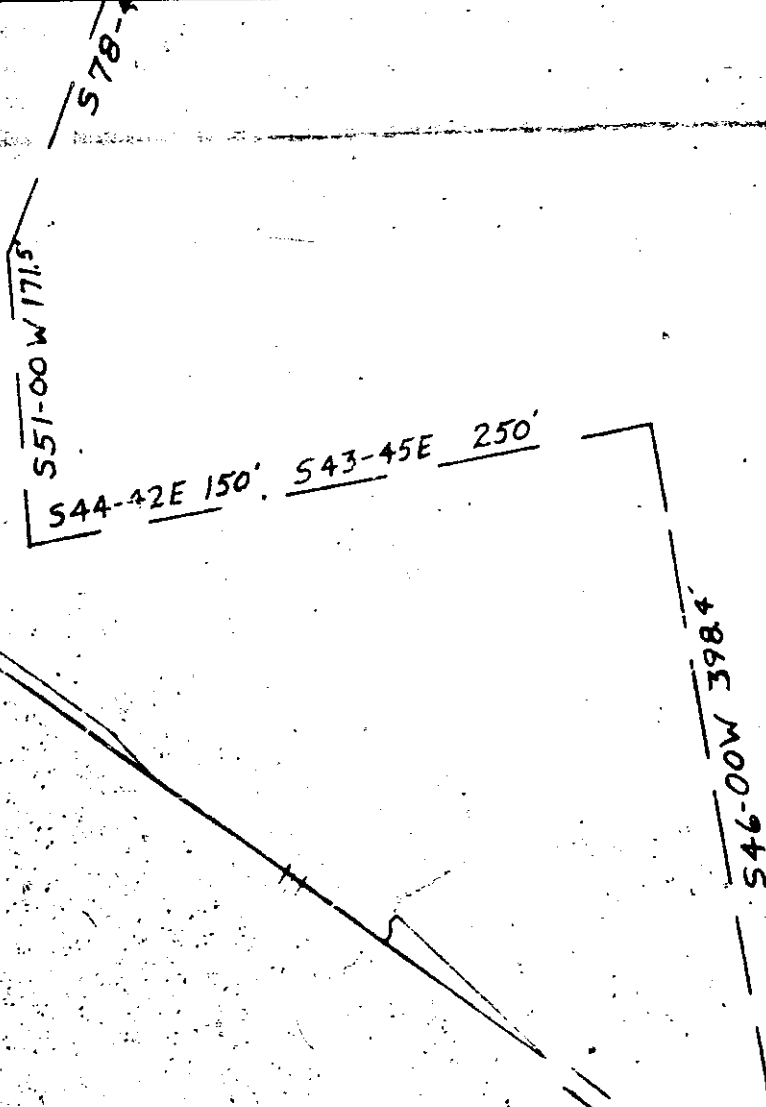


Plat Book SSS Page 347



*NOTE
ALL BROKEN LINES TAKEN FROM
PLAT BY TERRY DILL 11-3-
49.25 ACRES

PT. 514.

Recorded Oct. 13, 1970 at 3:45 P. M., #88410.

HIGHWAYS U.S.

11-3-49

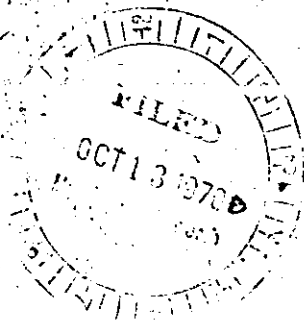
PRO
S.C. BEATT
CLEVELAND TWR
JUNE 15, 1968

(4)

C.F.

88410

OCT 13 1970



3.00