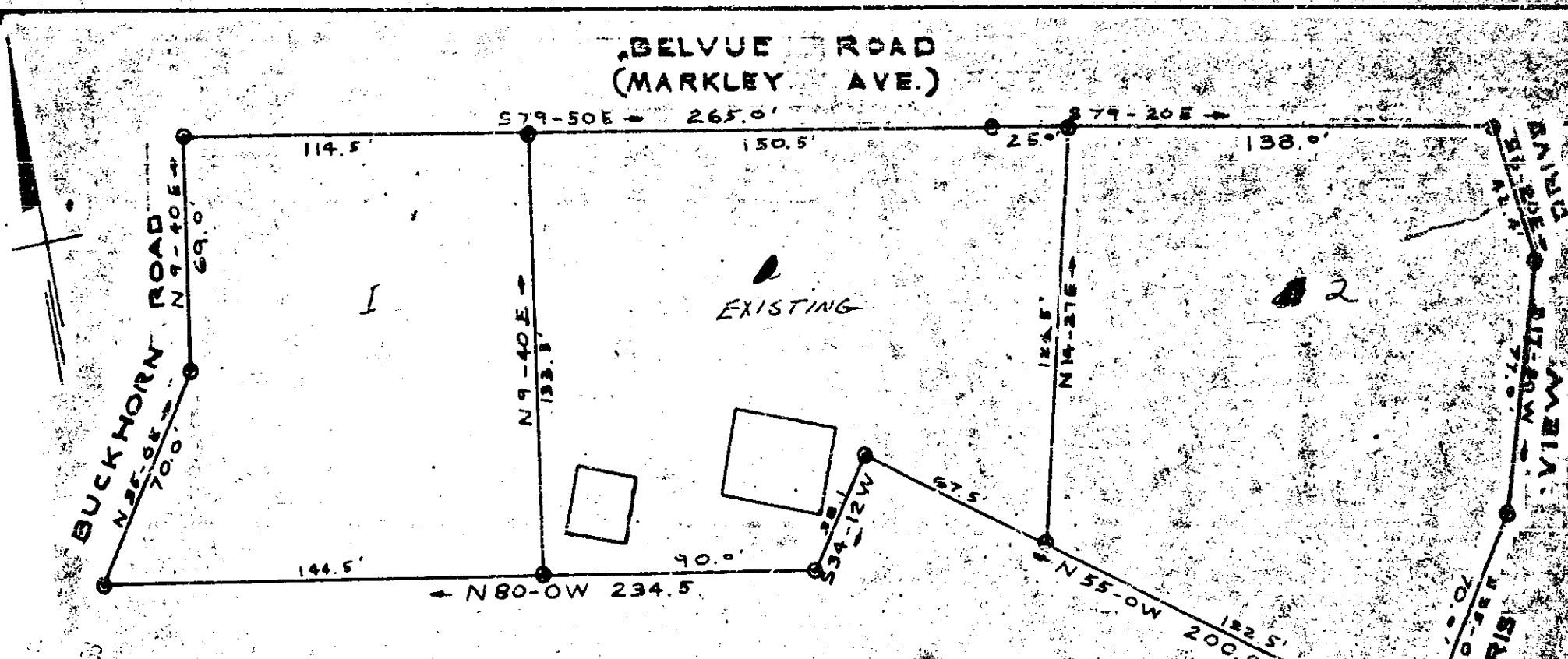


# Plat Book SSS Page 126

SSS - 176



Oct 21 9 32 AM 1968  
 OLDE...  
 12 170

THIS PLAT IS NOT A SUBDIVISION  
 AS DEFINED BY THE GREENVILLE  
 COUNTY SUBDIVISION REGULATIONS.  
 10/30/1968 Bert G. Whitebottom  
 Chairman, Secretary, & Director of  
 Planning  
 Greenville County Planning Commission

PROPERTY OF  
**GORDON GALLAGHER**  
 NEAR GREENVILLE, S.C.  
 SCALE 1" = 40' 19 OCT. 68

10723 111-126  
 \$1.00 picture

Recorded October 31, 1968 At 9:32 A.M. # 10723

ROBERT E. JORDAN PLS # 1208