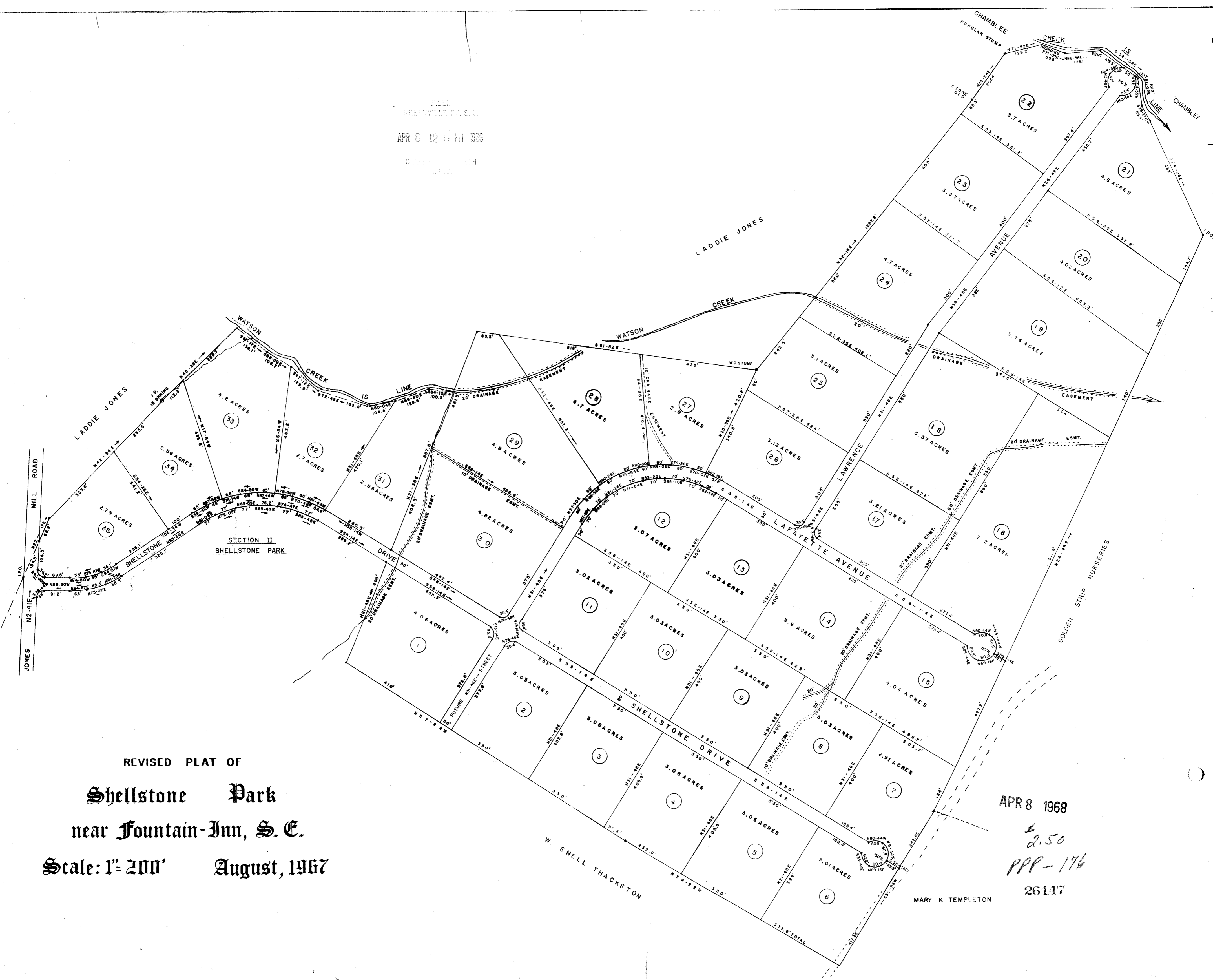


FILED
GREENVILLE, S. C.
APR 8 12 31 PM 1968
COUNTY CLERK
OFFICE



REVISED PLAT OF
Shellstone Park
near Fountain-Inn, S. C.
Scale: 1" = 200' August, 1967

APR 8 1968
2.50
PPP-176
26147
MARY K. TEMPLETON

REVISED LOTS 5 & 6, LOTS 16 & 17 DEC. 19, 1967 - PLAT RECORDED SEPT. 7, 1967 - PLAT BOOK PPP-147
ADDED SHELLSTONE PARK SECTION II - LOTS 31 THRU 35 DEC. 19, 1967 - PLAT RECORDED SEPT. 14, 1967 - PLAT BOOK RRR-155

#26147 Filed This 8th day of April 1968
and Recorded in Vol. PPP-176 at 12:31 P.M.
Ollie Templeton
Register-Memo Conveyance Greenville County, S. C.