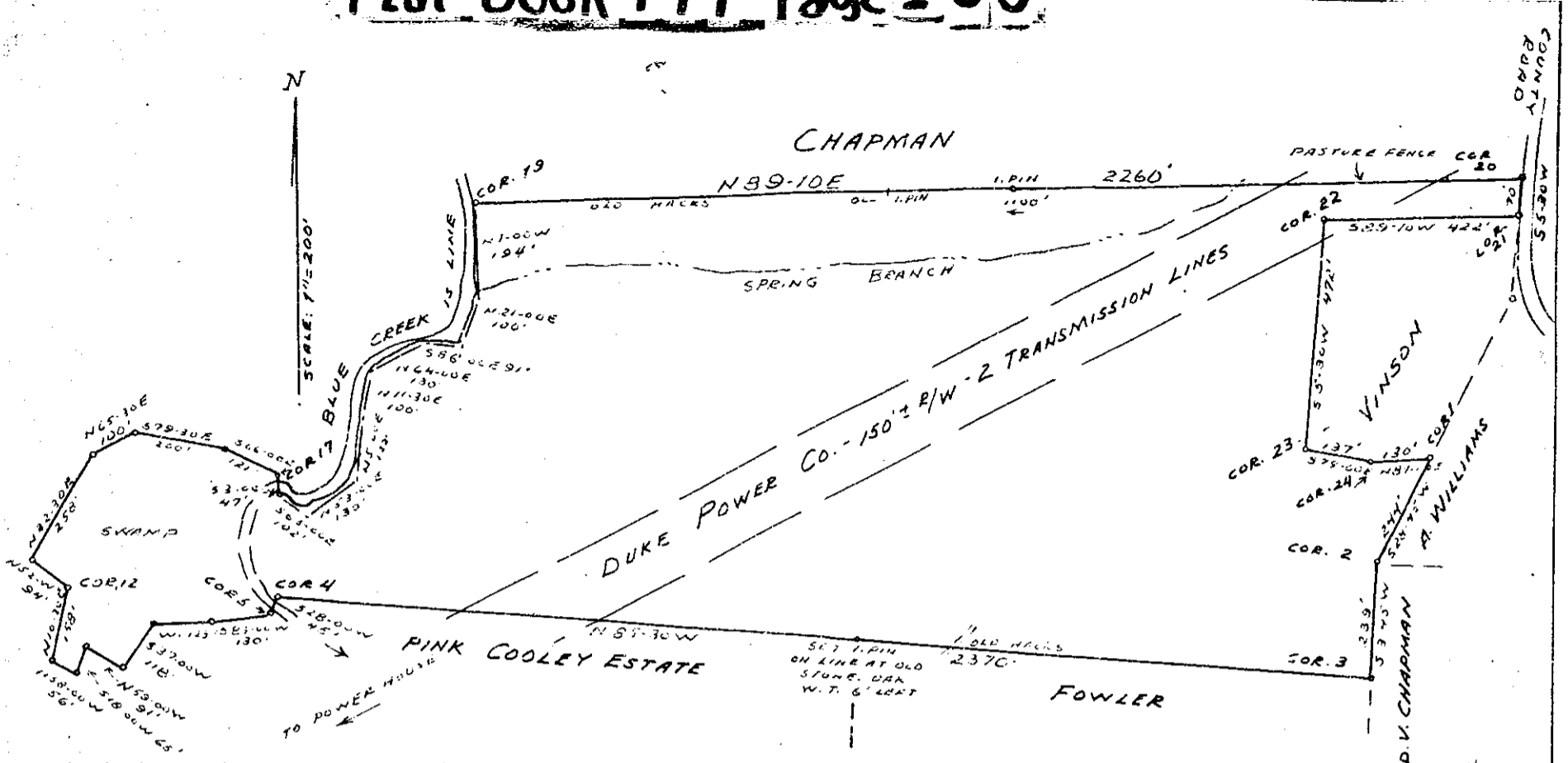


Plat Book-PPP-Page 155



NOTE: LINES FROM CUR 5 TO CUR. 17 FOLLOW AN OLD, CHOKED CHANNEL.

TOTAL AREA: 49 ACRES. ±

CORNER DESCRIPTIONS:

- CORNER 1 IS OLD I PIN, COMMON TO A WILLIAMS. 3" PINE N 24-30 E 16', 3" PINE S 30 W 21'.
- CORNER 2 IS SMALL STONE, COMMON TO A WILLIAMS. 8" PINE S 12 W 11', 3" PINE N 21 W 7', 3" PINE S 84 E 13'.
- CORNER 3, FORMERLY STAKE, GONE, SET I PIN. 2" CEDAR S 35 E 4'.
- CORNER 4, FORMERLY STAKE, GONE, SET I PIN ON BANK. 16" BIRCH S 57 W 4', 12" BIRCH N 58 W 9'.
- CORNER 5, FORMERLY STAKE, GONE, SET I PIN ON BANK. 20" TRIPLE ELM E. 10'.
- CORNER 6, FORMERLY STAKE, GONE, SET I PIN. 7" ASH S 50 E 10'.
- CORNER 7, FORMERLY STAKE, GONE, SET I PIN. 20" ASH, O.M., N 56 W 11'.
- CORNER 8, FORMERLY STAKE, GONE, SET I PIN. 14" ASH, O.M., N 5 W 3'.
- CORNER 9, FORMERLY STAKE, GONE, SET I PIN. 9" ASH S. 10'.
- CORNER 10, FORMERLY STAKE, GONE, SET I PIN. 12" ASH, O.M., W. 14', 9" BIRCH N 5 E 10'.
- CORNER 11, FORMERLY STAKE, GONE, SET I PIN. NO W.T. AVAILABLE.
- CORNER 12, FORMERLY STAKE, GONE, SET I PIN. 6" BOX ELDER S 12 E 12', 6" BOX ELDER N 62 E 3'.
- CORNER 13, FORMERLY STAKE, GONE, SET I PIN. NO W.T. AVAILABLE.
- CORNER 14, FORMERLY STAKE, GONE, SET I PIN. 5" BOX ELDER S 88 E 5'.
- CORNER 15, FORMERLY STAKE, GONE, SET I PIN. 10" S. Gum, O.M. N 21 W 10', 9" MAPLE, O.M., S 21 E 3'.

- CORNER 16, FORMERLY STAKE, GONE, SET I PIN. 5" BOX ELDER, O.M., S 15 W 6', 2" HICK. E. 6'.
- CORNER 17 IS 20" LEARNING BIRCH, O.M. 7' S. Gum S 52 E 9'.
- CORNER 18, FORMERLY STAKE, GONE, SET I PIN. 24" HICKORY, O.M., N 55 W 3', 2" IRONWOOD N 50 E 12'.
- CORNER 19 FORMERLY STAKE, GONE, SET I PIN. 2" POPLAR S 88 E 5', 2" IRONWOOD S 23 W 4'.
- CORNER 20, FORMERLY I PIN, GONE, SET I PIN AT FENCE CORNER POST.
- CORNER 21, FORMERLY I PIN, GONE, SET I PIN ON ROAD BANK, NO W.T. AVAILABLE.
- CORNER 22 IS OLD I PIN IN R/W. NO W.T. AVAILABLE.
- CORNER 23, FORMERLY I PIN, GONE, SET I PIN. 2" PERSIMMON N 42 E 7', 3" PINE S 20 W 4'.
- CORNER 24 IS STUMP PILE, SET I PIN. 8" WALNUT N 32 E 9', 3" PINE S 20 W 4'.

FILE
GREENVILLE CO. S.C.
SEP 15 12 43 PM 1967
CLERK OF COURTS
R. W. S.

GREENVILLE COUNTY, S.C. OAKVILLE DISTRICT

SURVEY FOR THE EAST HIGHLANDS COMPANY OF THE RALPH E. PHILLIPS TRACT, LOCATED 5 MILES SE OF PELZER. REFERENCE IS MADE TO PLAT BY "FF", pp. 24, 25 (M.V. VINSON PLAT) IN THE GREENVILLE COUNTY RMC OFFICE.

SURVEYED 28-31 AUG, 1967 DAN E. COLLINS, PLS
Dan E. Collins



8013 SEP 15 1967

2.50
PPP-155

BAD COPY

#8013 Filed This 15th day of Sept. 1967
And Recorded in Vol. PPP, Page 155 on 12-23-67
Ollie Samuworth
Register Meane Conveyance Greenville County, S. C.