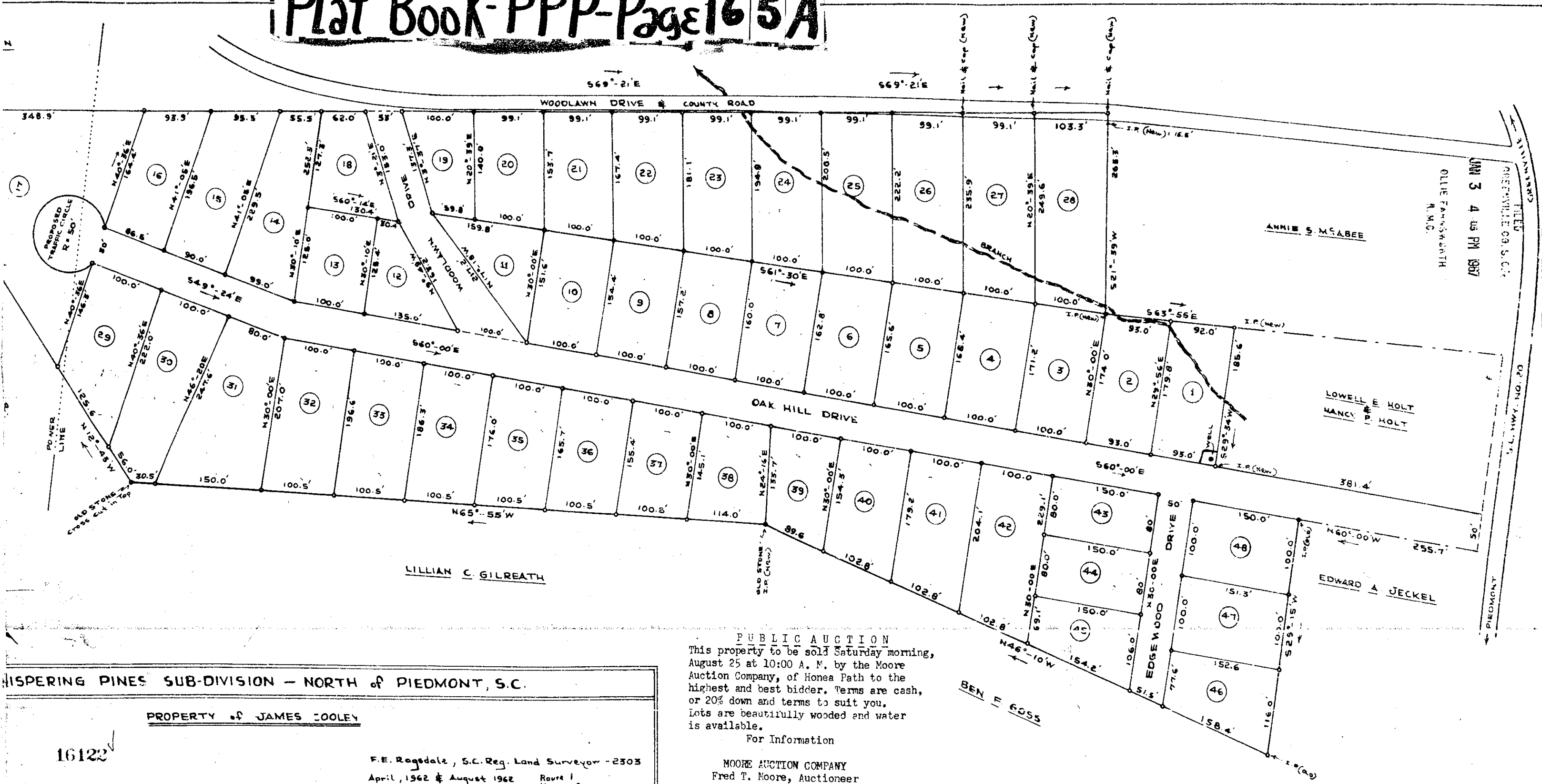


Plat Book-PPP-Page 165A



WHISPERING PINES SUB-DIVISION - NORTH of PIEDMONT, S.C.

PROPERTY of JAMES COOLEY

16122

F.E. Rogdala, S.C. Reg. Land Surveyor - 2303
 April, 1962 & August 1962
 Range 1
 HANER PTN, S.C.
 EM 9-7245

PUBLIC AUCTION
 This property to be sold Saturday morning, August 25 at 10:00 A. M. by the Moore Auction Company, of Honea Path to the highest and best bidder. Terms are cash, or 20% down and terms to suit you. Lots are beautifully wooded and water is available.

For Information
 MOORE AUCTION COMPANY
 Fred T. Moore, Auctioneer
 EM 9-2200 Honea Path

16122 Filed This 3 day of January 19 1967
 And Recorded in Vol. PPP - Page 65 - at 4:05 P.M.
 C. E. Edman
 S.C.

BAD COPY

125 444-65