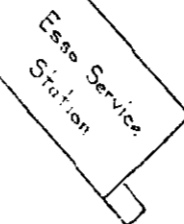
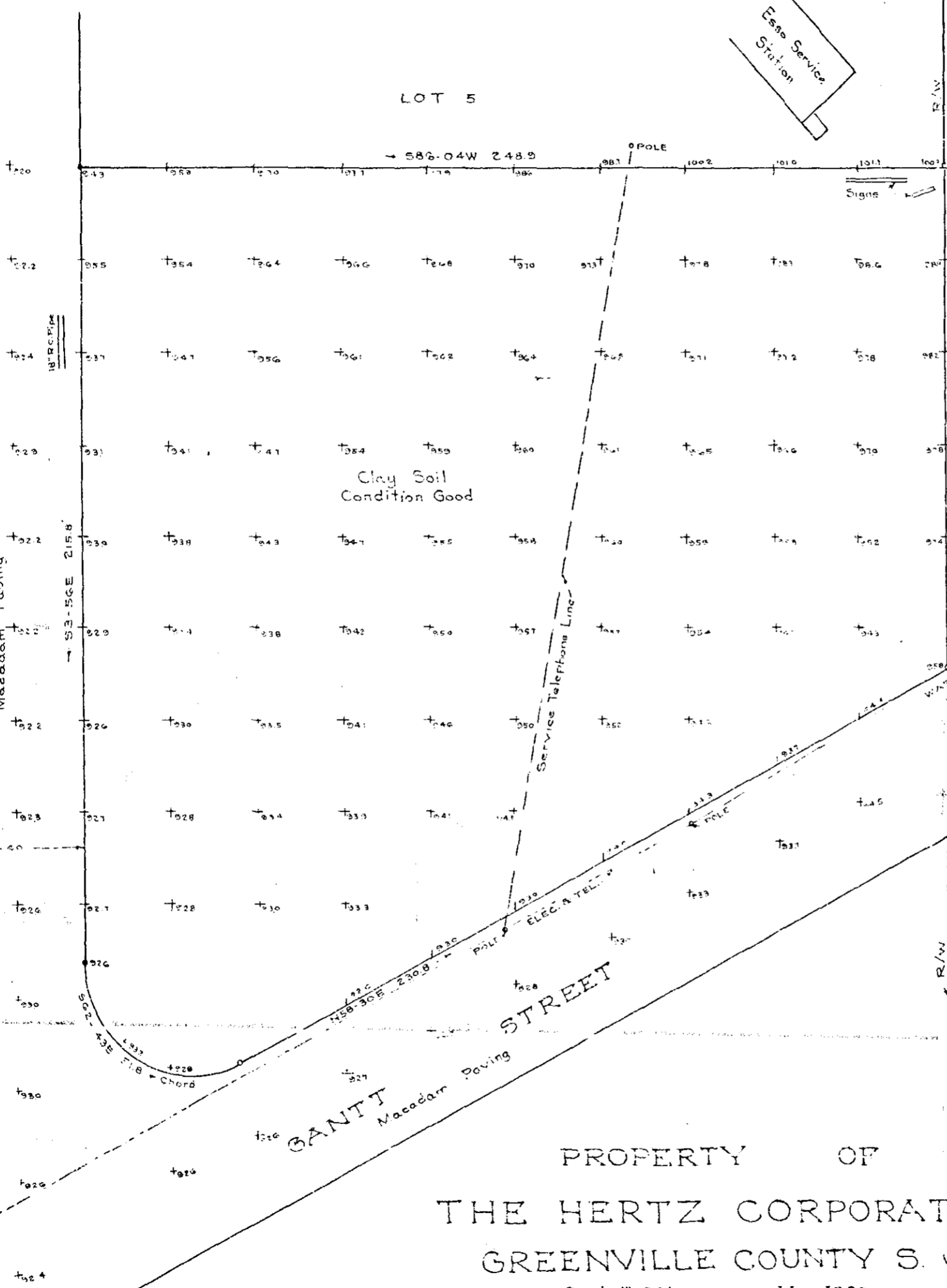


Plat Book-PPP-Page 27

LOT 5



WELDON STREET
Macadam Paving



POINTSETT HIGHWAY
U. S. HWY NO. 25
Bituminous Paving

OLD PARIS MOUNTAIN ROAD

PROPERTY OF
THE HERTZ CORPORATION
GREENVILLE COUNTY S. C.

Scale 1"=20' May 1966

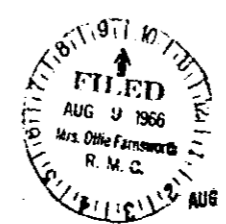
DALTON B. NEVES, ENGINEERS
GREENVILLE, S. C.

BAD COPY

Iron Pins at all Corners - FB. 366
Lots 1-2-3-4 - Plat Edgar C. Waldrop Recorded
in Plat Book 'B' Page 171 Office of R. M. C.

PPP-37
050

2079



2079 Filed for Record in Office of R. M. C. in the County of Greenville, S. C. on August 9, 1966. Register - Main Conveyance Greenville County, S. C.

