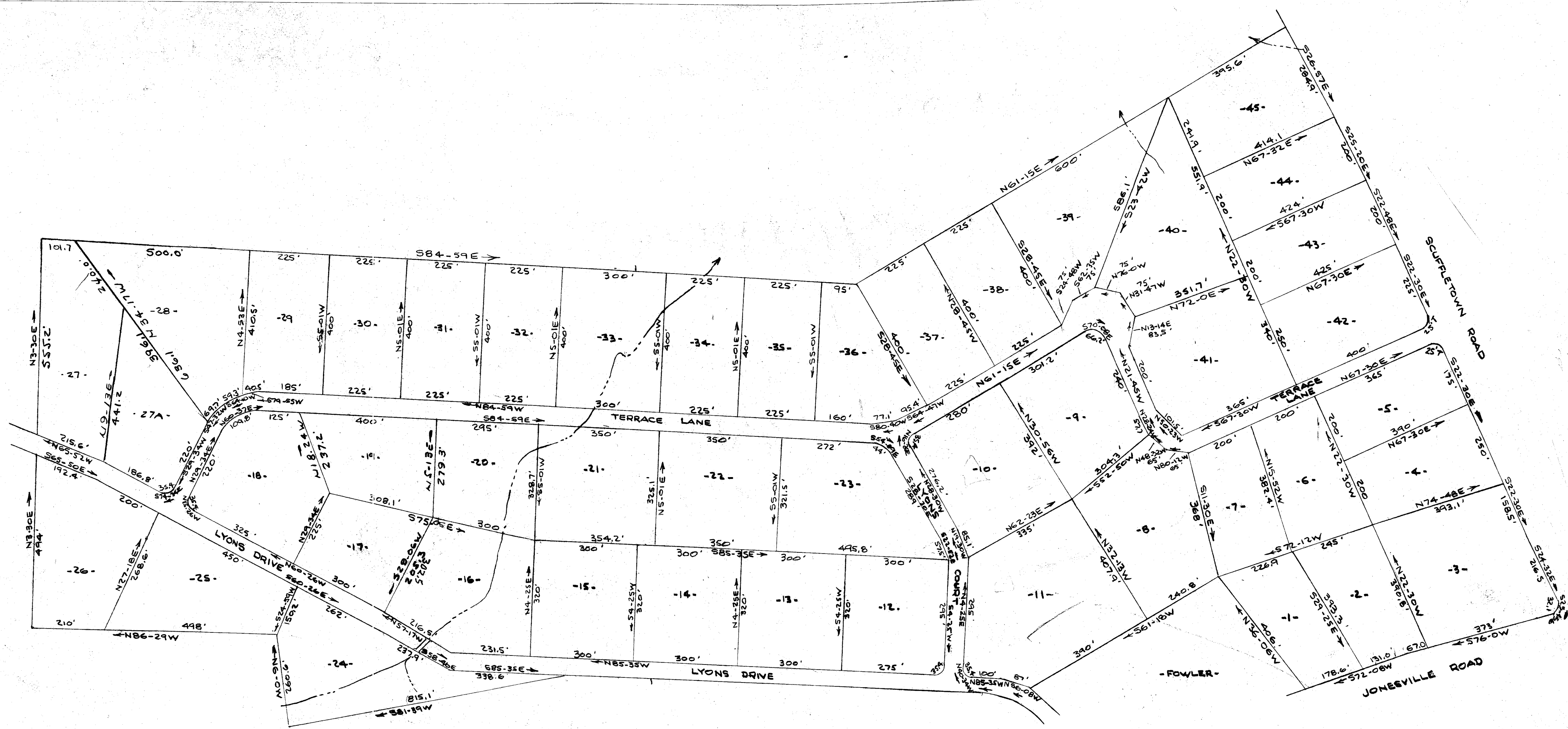


127



FILED
 GREENVILLE, S. C.
 JUN 28 12 15 PM 1967
 OLIE FANNING
 R. M. D.

SEE PAGE 124

NOTE: IRON PINS AT ALL CORNER.

SUBDIVISION OF
TERRACE ACRES
 NEAR GREENVILLE, S. C.
 SCALE 1"=200'
 16 JUNE 1967

CAROLINA ENGINEERING
 & SURVEYING CO.
 GREENVILLE, S. C.

See 300 330
 000-127

380 Filed This day of June 19 67
 And Recorded in Vol 470 Page 127 at 11:15 M.
 Olie Fanning
 Register Meane Conveyance Greenville County, S. C.

178.6
 121.0
 0.25
 376.6
 24.15
 24.15
 17.19