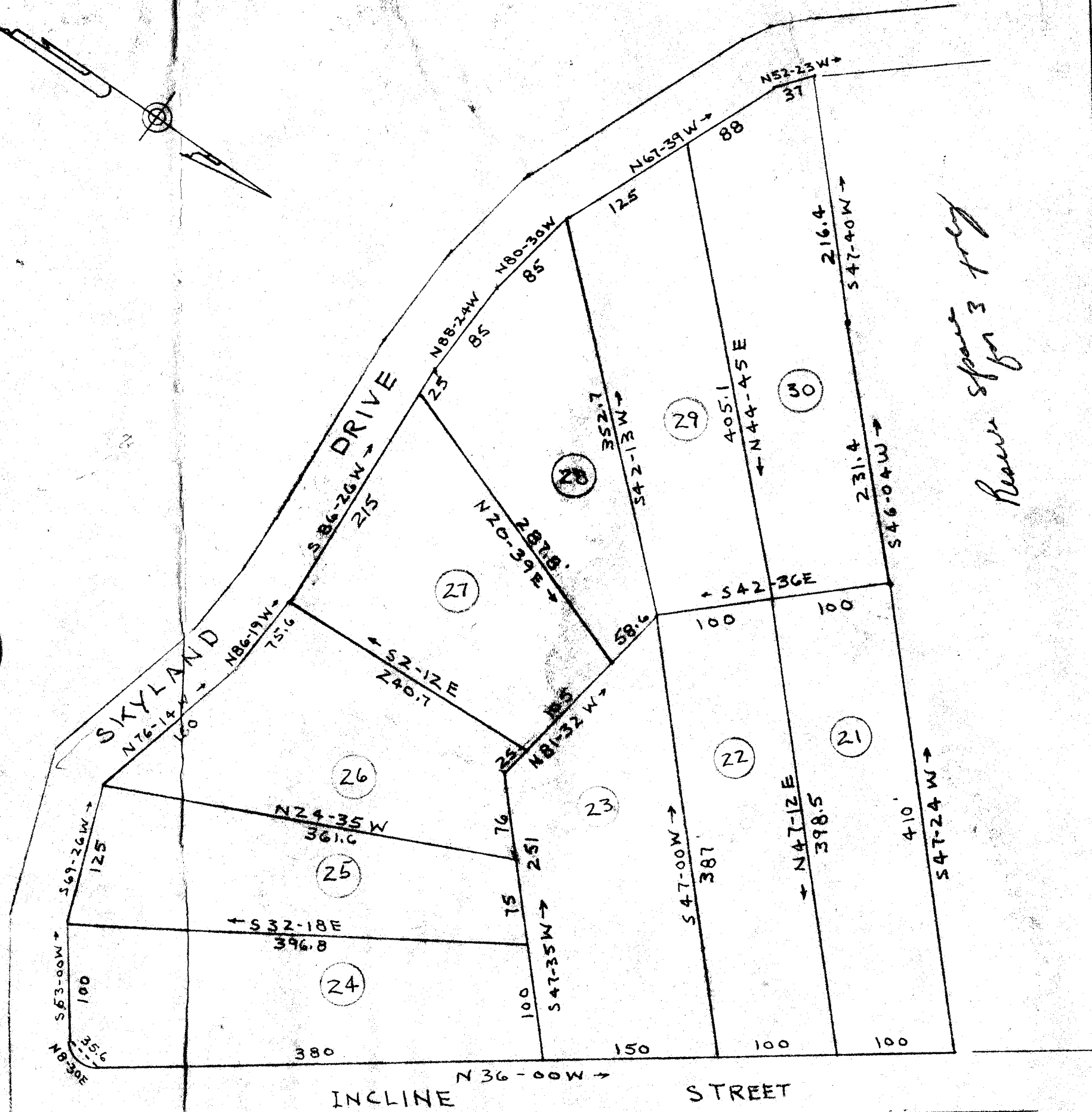


120

(2)



Reserve space for 3 lots

INCLINE STREET

BLOCK 5 MIDWAY ACRES

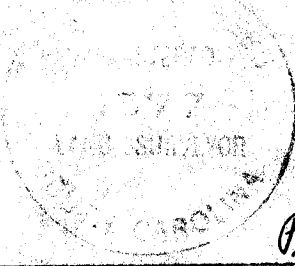
PROPERTY OF S. C. BEATTIE ESTATE
CLEVELAND TOWNSHIP

GREENVILLE COUNTY S. C.

WEBB SURVEYING & MAPPING CO.

SCALE 1"=100'

MAR 1967

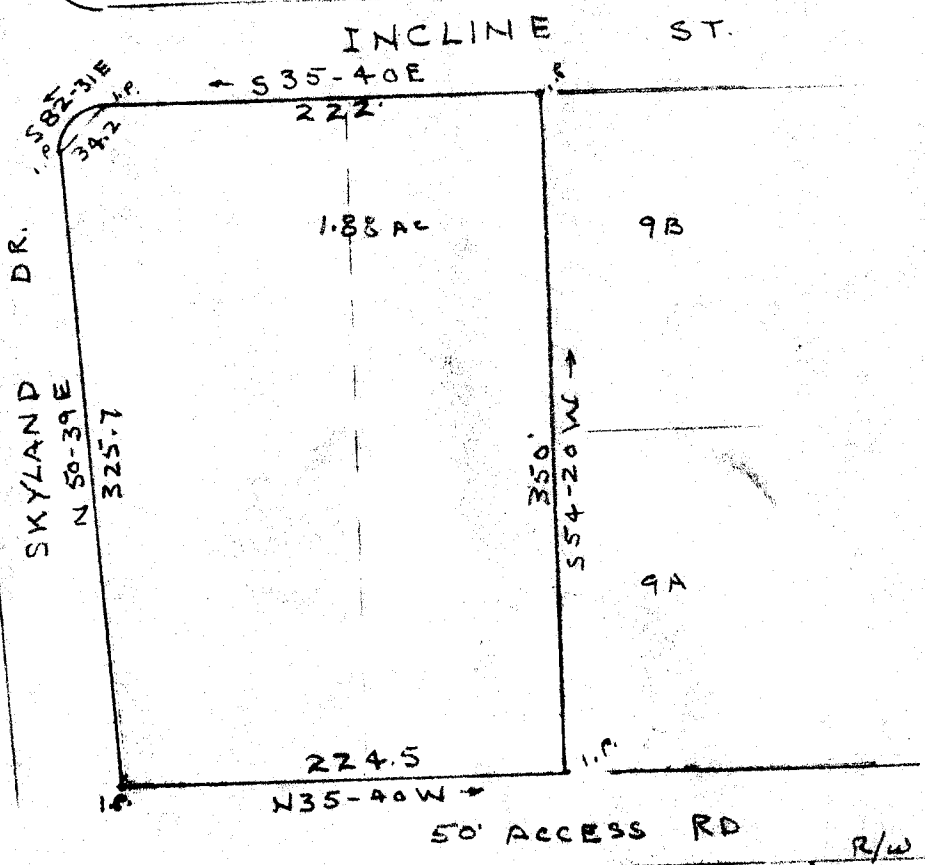
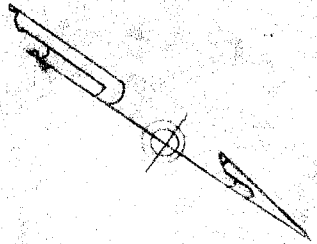


Plat Recorded June 22nd 1967 at 12 M. # 31422.

(6)

120

(BLOCK 5)



← TO MARIETTA GEER HIGHWAY U.S. 276 TO CLEVELAND →

PLAT OF
 LOTS 10 & 11 MIDWAY ACRES

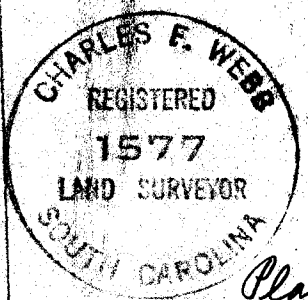
S.C. BEATTIE ESTATE

CLEVELAND TWP GREENVILLE COUNTY S.C.

WEBB SURVEYING & MAPPING CO.

SCALE 1"=100'

APRIL 15, 1967



Plat Recorded June 22nd, 1967 at 12 M. # 31422

2