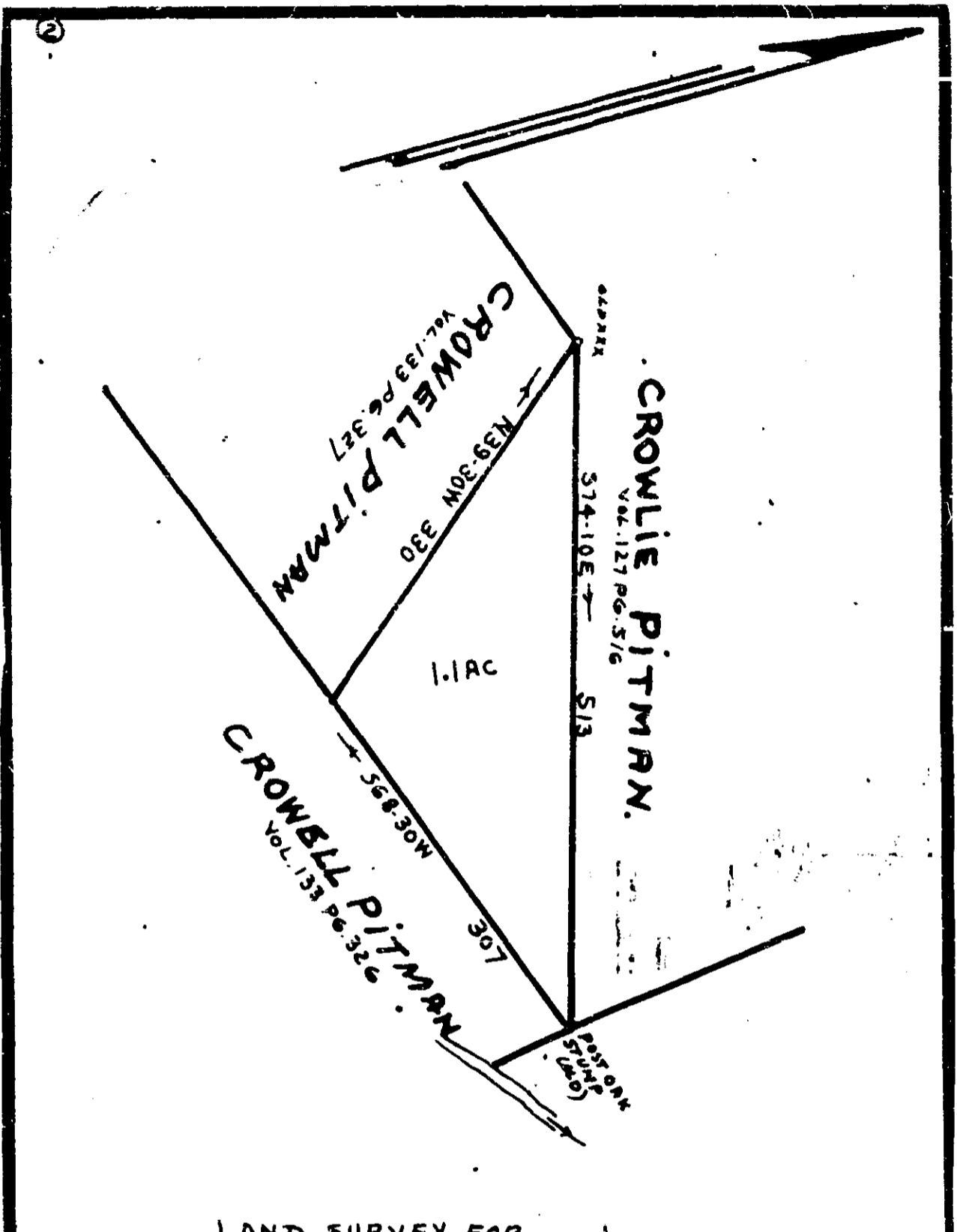


D-14



LAND SURVEY FOR  
**CROWLIE PITMAN: G'VILLE CO. S.C.**

ABOUT 1/4 MI. S. E. OF OAK GROVE. IS PART VOL. 127 PG. 516

6-17-1966. 1"=100'. J. Q. BRUCE REG. SUR. S. C. NO. 667

CROWLIE, OR CROWELL PITMAN IS ONE AND SAME PERSON  
 SO FAR AS I KNOW.

FILED  
 GREENVILLE CO. S.C.  
 JAN 3 10 40 AM 1967  
 CLERK OF COURSEMENTH  
 S.W.C.

16119

Part in 50

NNN-151

DIETZGEN 1966

16119 Filed This 3 day of Jan. 1967  
 And Recorded in Vol. NNN Page 151 at 12:40 PM

*Dick Jamulath*  
 Register Meigs County Greenville County, S.C.

151