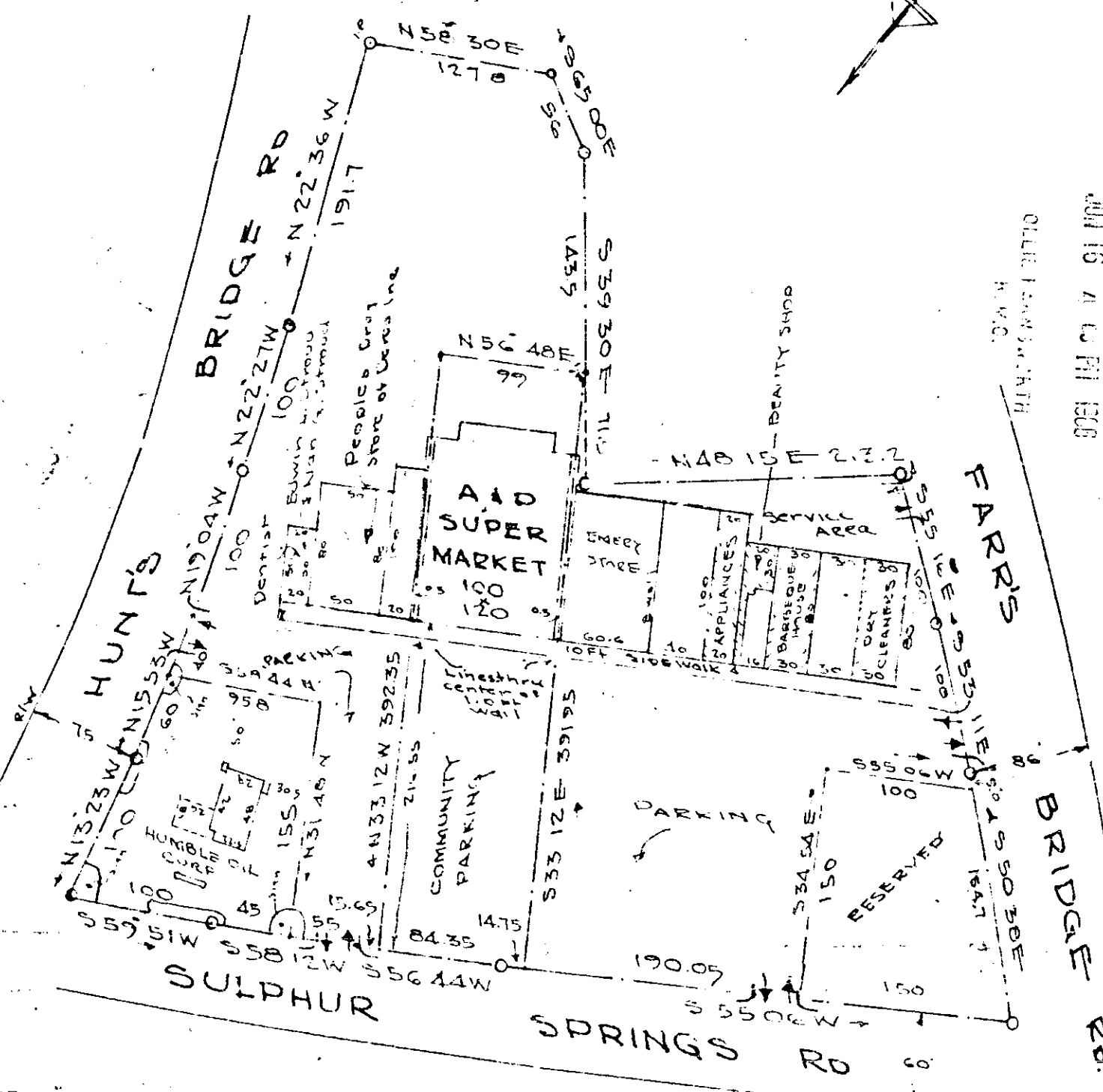
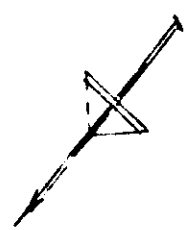


96
106
112



NOTE
 REVISED- 12-20-1965 - FOR
 APPLIANCE, BEAUTY SHOO &
 BARBERQUE SHOE LOCATIONS
 FEB-20-1965 - FOR
 HUNTS DIL CORP. LOCATION
 FEB 12-1966
 TRY CLEANERS - SHOE
 MAY 11-1966
 PEOPLES DRUG STORE OF
 BEEBA INC.
 EDWIN L. STROUD (DENTIST)
 BRIAN G. STROUD

PROPERTY OF
**NALLEY COMMERCIAL
 PROPERTIES INC.**
 GREENVILLE COUNTY, S.C.
 SCALE 1" = 100' APR 1965
 FINAL MAY 16-1966

35671

MMM - 149 JONES ENGINEERING SERVICES - GREENVILLE, S.C.

35671 Filed This 16 day of June 1966
 And Recorded in Vol. MMM Page 149 at 4:00 P.M.
Ollie Jarnsworth

14