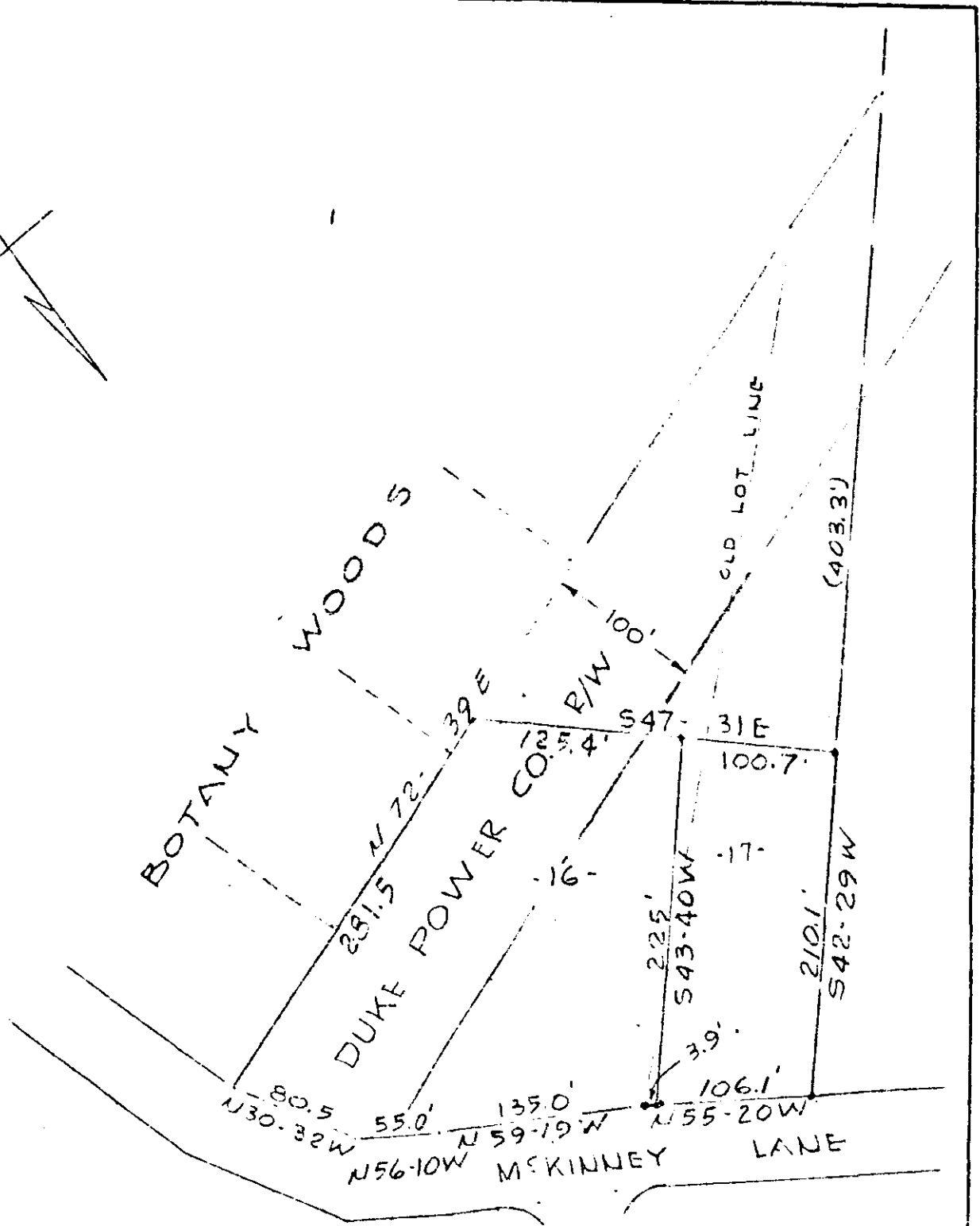


Plat Book MMM. Page 125B



REVISION OF LOTS 16 & 17 OF PLAT OF
BOTANY WOODS, INC.
 NEAR GREENVILLE, S. C.
 1" = 100'
 5-14-66

FILED
 GREENVILLE CO. S. C.

MAY 23 2 29 PM 1966

OLLIE FARMERS
 R. O. C.

PIEDMONT ENGINEERS AND ARCHITECTS
 GREENVILLE, S. C.

MMM-125

33747

33747 Filed This 26 day of May 1966

And Recorded in Vol. MMM Page 125 at 3:29 PM

Ollie Farmers

Register Mesne Conveyance Greenville County, S. C.