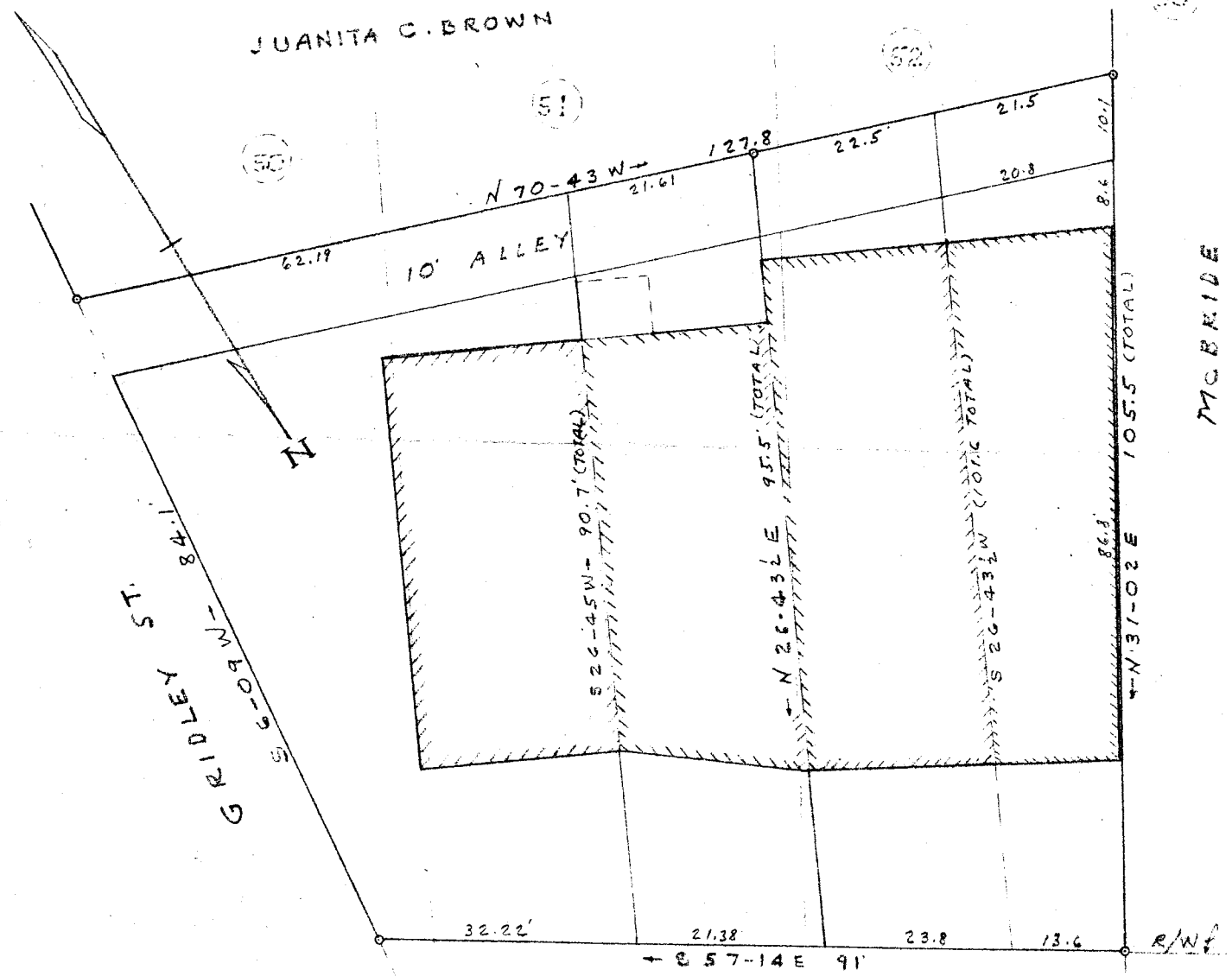


JUANITA C. BROWN



MAY 13 12 30 PM 1966

JESSIE T. HAYS - MARIE B. HAYS
 AND
 HUGH D. WATKINS & JESSIE H. WATKINS
 NEAR GREENVILLE S. C. 32544
 SCALE 1" = 20' NOV. 18, 1963
 SURVEYED BY R.K. Campbell Eng.

mm-105 506 Part in

32544 Filed This 13 day of May 1966
 And Recorded in Vol. MMW Page 105 at 12:30 P.M.
 Ollie Farnsworth
 Register Mesne Conveyance Greenville County, S. C.

105