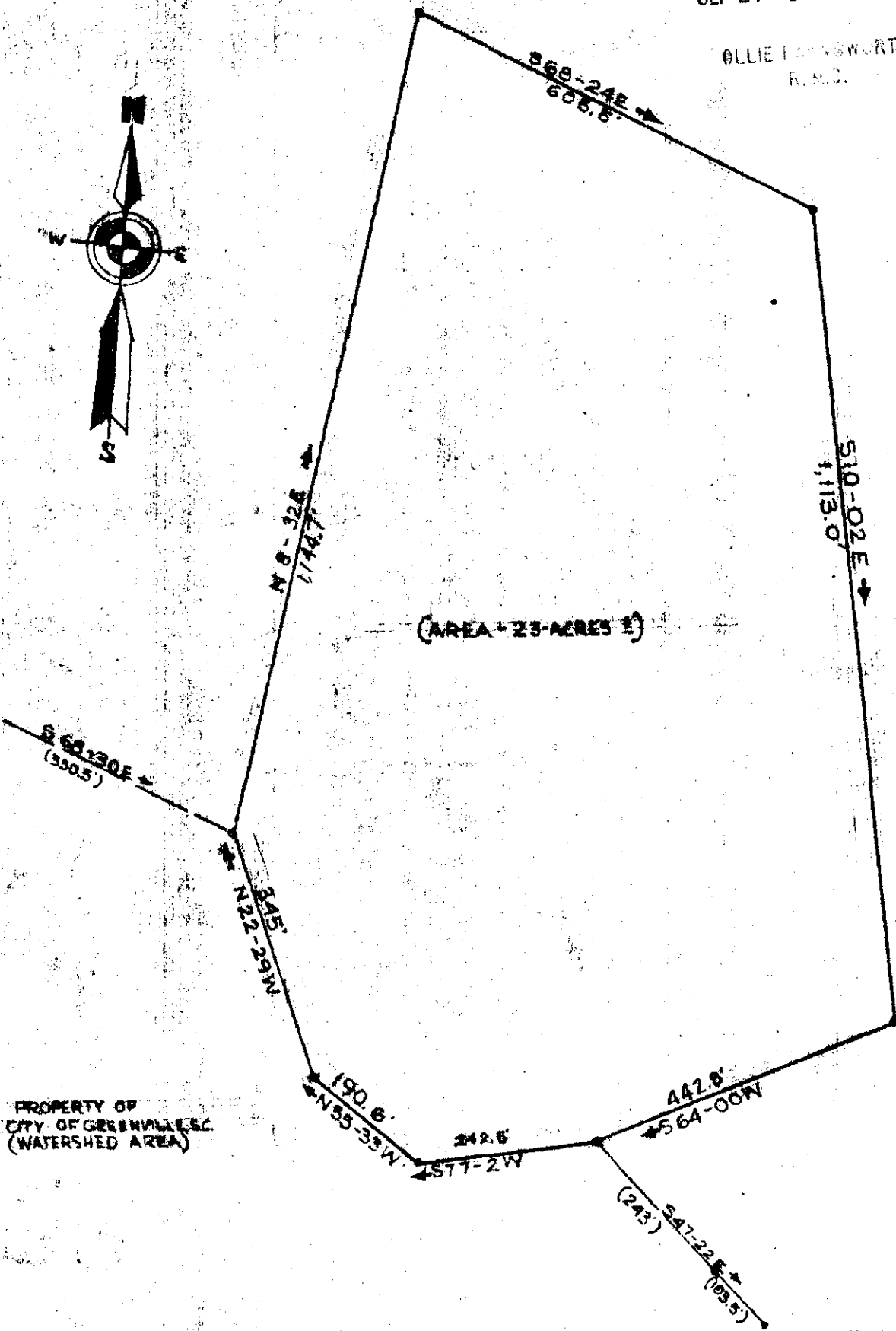


GREENVILLE CO. S.C.

SEP 24 8 51 AM 1965

OLLIE FAY WORTH,
R.M.C.



(AREA = 23 ACRES ±)

PROPERTY OF
CITY OF GREENVILLE
(WATERSHED AREA)

PLAT SHOWING THE
ZILDA MOORE HOUSE PLACE

AT THE HEADWATERS OF MATHEWS CREEK
 GREENVILLE COUNTY, S.C. SCALE 1"=200'

SEP 24 1965

9609

-NOTE-

THIS PLAT COMPILED FROM THE APPROXIMATE
 FORMER OCCUPATION CORNERS BY FIELD
 SURVEY, AND BY INFORMATION FROM EXISTING PLATS.

JANUARY - 1962

C.F. WEBB, R.L.S.

KKK-126

9609 Filed This 24 day of SEP 19 65
 And Recorded in Vol. KKK Page 126 at 8:51 AM
 OLLIE FAY WORTH
 Register Mesne Conveyance Greenville County, S. C.