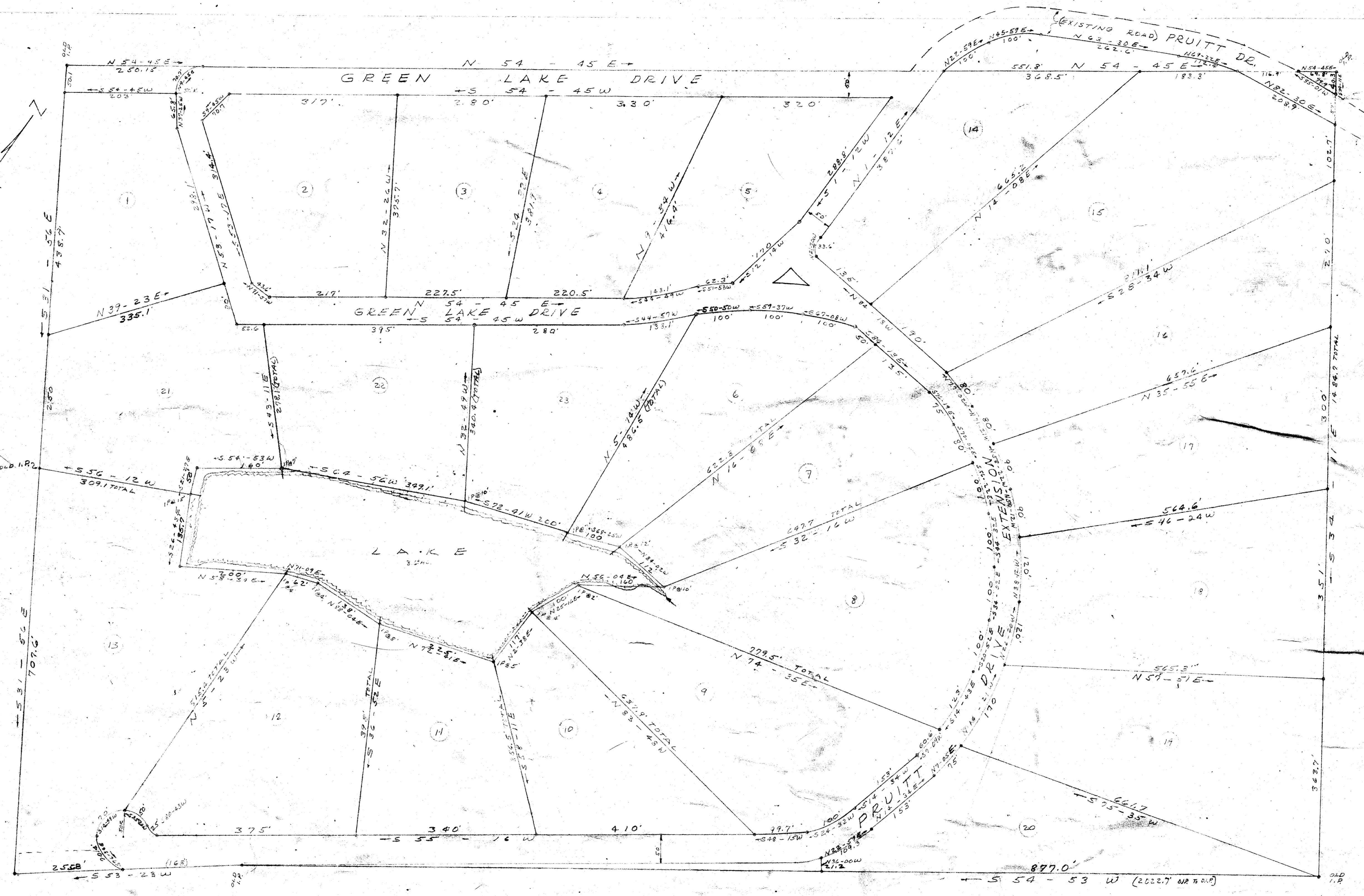


Filed this 21st day of Dec. 1965
 And Recorded in Vol. 899 Page 115 of 1815 DM
 Register Mame Conveyance Greenville County, S. C.



THIS IS AN ACCURATE AND ACTUAL SURVEY MADE BY ME JULY, 1965, REVISED DECEMBER 1965.
 H. C. Clarkson
 S.C.P.L.S. No. 2589

FINAL PLAT
GREEN LAKE ACRES
 NEAR MAULDIN, S. C.
 JULY 23, 1965 SCALE: 1"=100'

PROPERTY OF
LANCO, INC.
 R. W. Waters
 12-15-65 PRES

DEC 21 1965
 18426

JJJ/115
 113-C

300