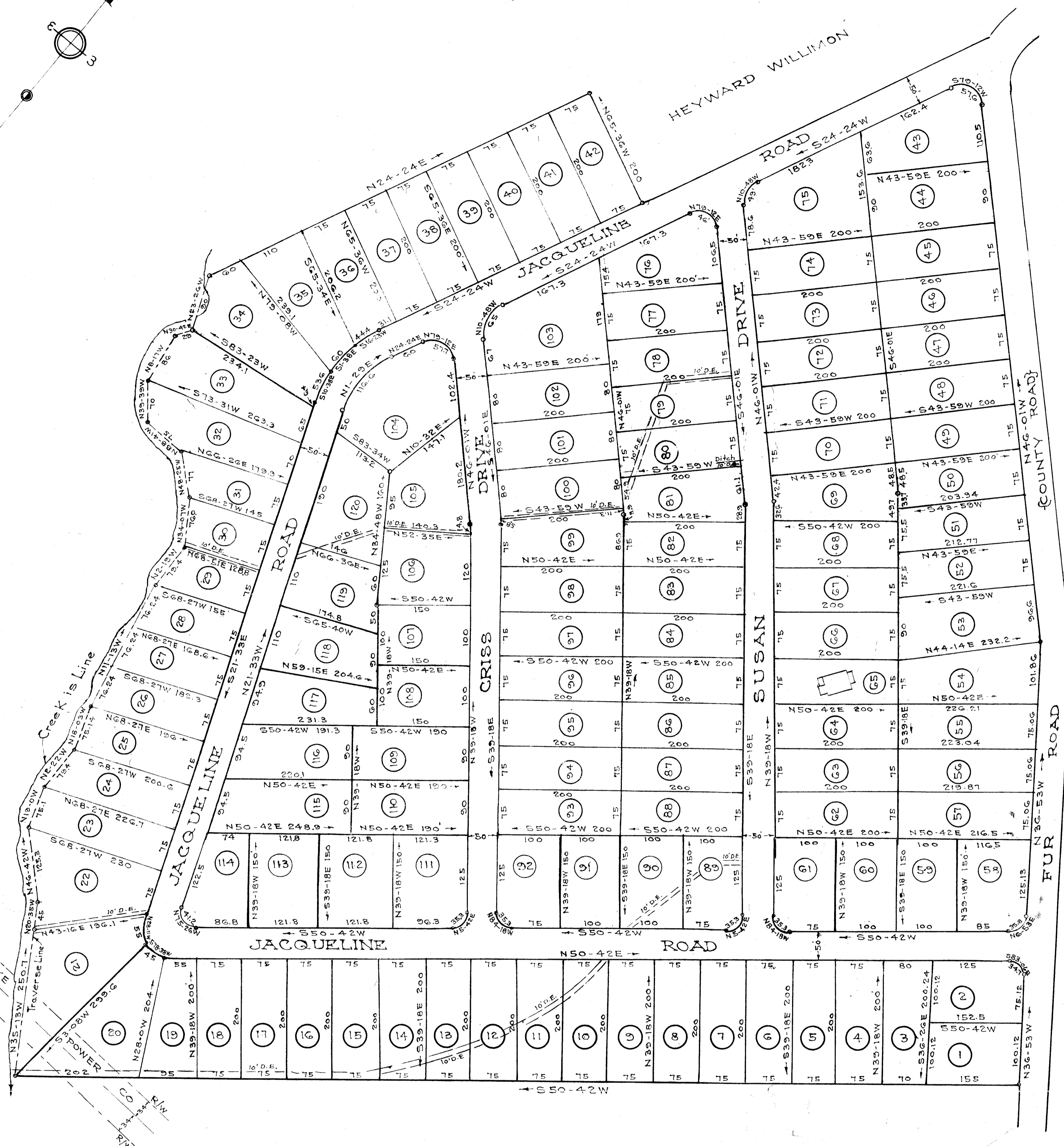


FILED
GREENVILLE S.C.
NOV 29 3 30 PM 1965
OLLIE F. ROSSWORTH
S.C.



GOLDEN GROVE ESTATES
PROPERTY OF M. W. FORE
GREENVILLE COUNTY S. C.
Scale 1"=100' September 1965

DALTON & NEVES, ENGINEERS
GREENVILLE S. C.

NOTES:
5Ft. Drainage & Utility Easements
along all side & rear lot lines.
Iron Pins at all Corners
Field Book 370
20Ft. Drainage Easement East From
Creek along Rear Lots 20 thru 34

NOV 20 1965
16104

3.00

888-97

16104 Filed This 29 day of Nov. 19. 65
And Recorded in Vol. 97 at 3387
Register Messrs Conveyance Greenville County, S. C.