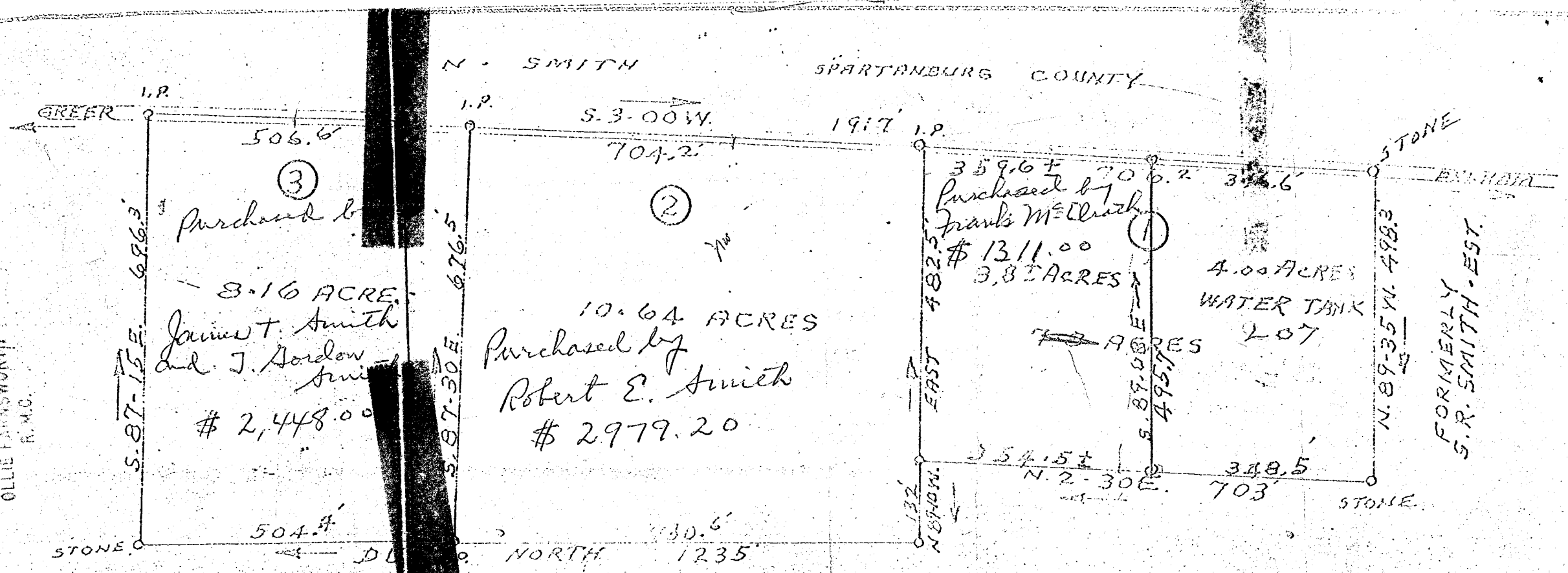


3222 Filed This 28 day of July 1965
 And Recorded in Vol. 999 Page 41 at 2:03 P.M.
 Ollie Farnsworth
 Register Mesne Conveyance Greenville County, S. C.

JUL 28 2 02 PM 1965

OLLIE FARNSWORTH
 R.M.C.



PROPERTY OF
W. D. SMITH ESTATE

LOCATED THREE MILES SOUTH OF GREER
 CHICK SPRINGS TOWN GREENVILLE COUNTY
 SOUTH CAROLINA

SCALE: 1" = 200 FEET
 FEBRUARY 8 1969
 TRACTS 1 & 2 PLATTED FROM PLAT BY W. A. CHRISTOPHER, SUR.
 SEPT. 15-1922. TRACT 3 PLATTED FROM PLAT BY W. A.
 CHRISTOPHER, SUR. SEPT. 1922. AND FROM PLAT BY W. A. CHRISTOPHER, SUR. SEPT. 1922.

899-41
 Paste in 504

3222