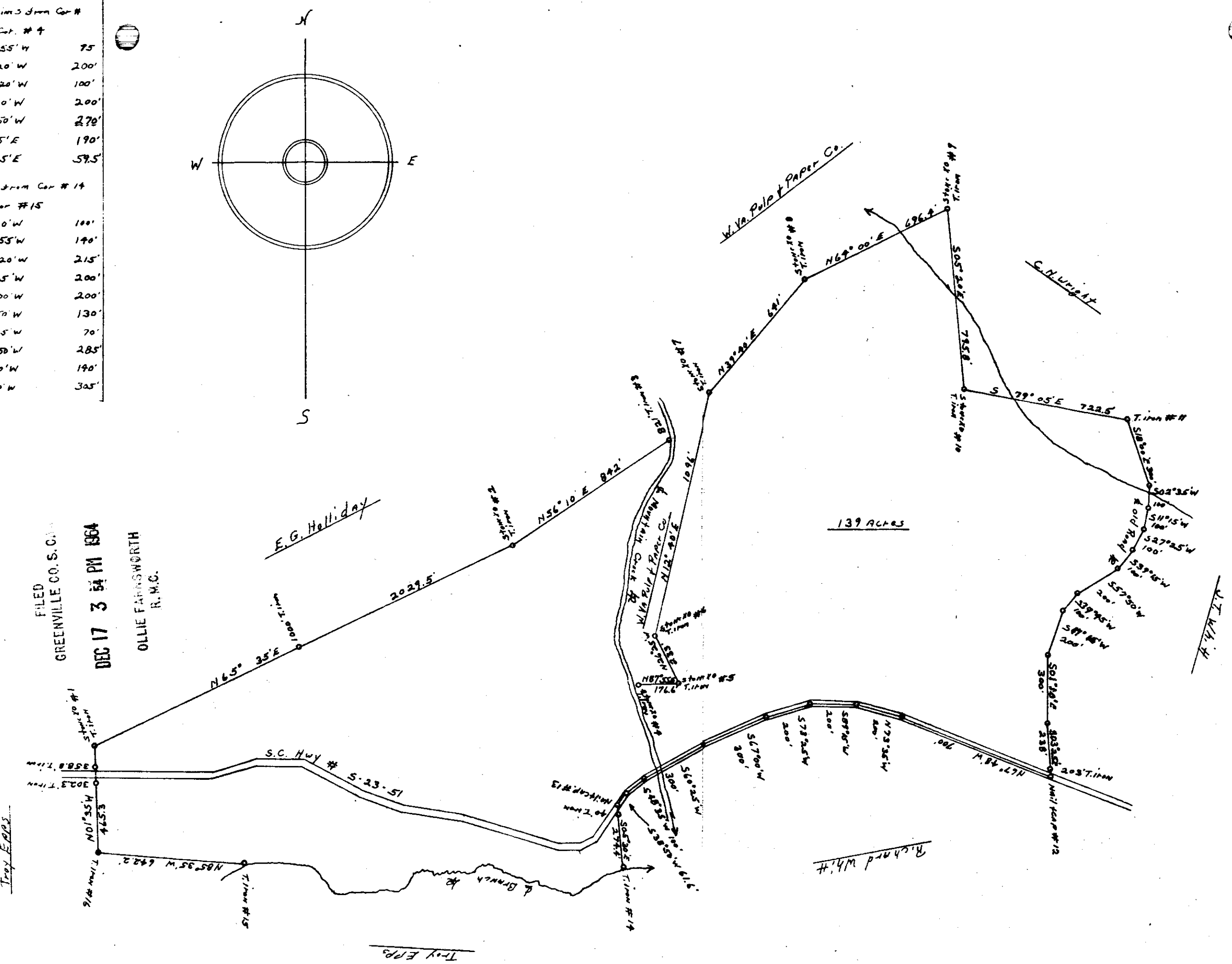
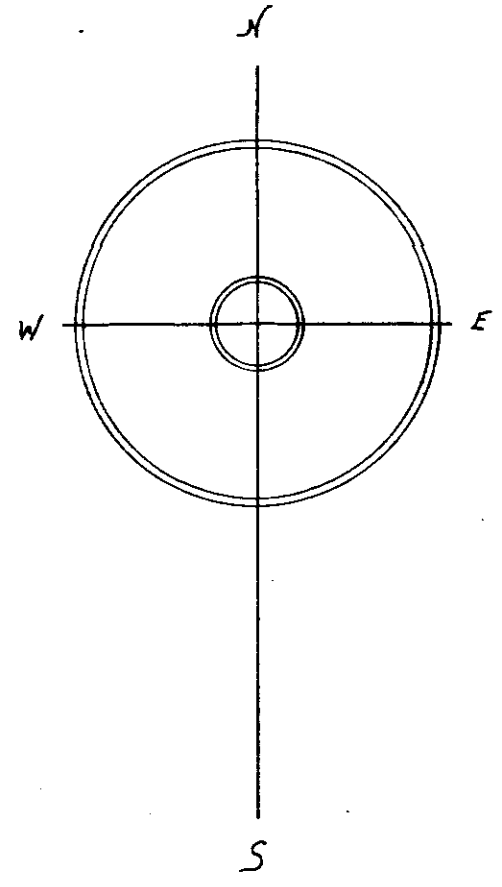


Line 3 from Cor #	
3 to Cor # 4	
S07°35' W	75'
S32°20' W	200'
S25°20' W	100'
S08°10' W	200'
S10°50' W	270'
S18°15' E	190'
N84°05' E	59.5'
Line from Cor # 14	
to Cor # 15	
S68°40' W	100'
S59°55' W	140'
N72°20' W	215'
N66°35' W	200'
S75°00' W	200'
N86°50' W	130'
S20°45' W	70'
S85°50' W	285'
N54°10' W	140'
N84°00' W	305'



Line from Cor # 14	
to Cor # 15	
S68°40' W	100'
S59°55' W	140'
N72°20' W	215'
N66°35' W	200'
S75°00' W	200'
N86°50' W	130'
S20°45' W	70'
S85°50' W	285'
N54°10' W	140'
N84°00' W	305'

Line from Cor # 14	
to Cor # 15	
S68°40' W	100'
S59°55' W	140'
N72°20' W	215'
N66°35' W	200'
S75°00' W	200'
N86°50' W	130'
S20°45' W	70'
S85°50' W	285'
N54°10' W	140'
N84°00' W	305'

Line from Cor # 14	
to Cor # 15	
S68°40' W	100'
S59°55' W	140'
N72°20' W	215'
N66°35' W	200'
S75°00' W	200'
N86°50' W	130'
S20°45' W	70'
S85°50' W	285'
N54°10' W	140'
N84°00' W	305'

Line from Cor # 14	
to Cor # 15	
S68°40' W	100'
S59°55' W	140'
N72°20' W	215'
N66°35' W	200'
S75°00' W	200'
N86°50' W	130'
S20°45' W	70'
S85°50' W	285'
N54°10' W	140'
N84°00' W	305'

Line from Cor # 14	
to Cor # 15	
S68°40' W	100'
S59°55' W	140'
N72°20' W	215'
N66°35' W	200'
S75°00' W	200'
N86°50' W	130'
S20°45' W	70'
S85°50' W	285'
N54°10' W	140'
N84°00' W	305'

Line from Cor # 14	
to Cor # 15	
S68°40' W	100'
S59°55' W	140'
N72°20' W	215'
N66°35' W	200'
S75°00' W	200'
N86°50' W	130'
S20°45' W	70'
S85°50' W	285'
N54°10' W	140'
N84°00' W	305'

Line from Cor # 14	
to Cor # 15	
S68°40' W	100'
S59°55' W	140'
N72°20' W	215'
N66°35' W	200'
S75°00' W	200'
N86°50' W	130'
S20°45' W	70'
S85°50' W	285'
N54°10' W	140'
N84°00' W	305'

Line from Cor # 14	
to Cor # 15	
S68°40' W	100'
S59°55' W	140'
N72°20' W	215'
N66°35' W	200'
S75°00' W	200'
N86°50' W	130'
S20°45' W	70'
S85°50' W	285'
N54°10' W	140'
N84°00' W	305'

Line from Cor # 14	
to Cor # 15	
S68°40' W	100'
S59°55' W	140'
N72°20' W	215'
N66°35' W	200'
S75°00' W	200'
N86°50' W	130'
S20°45' W	70'
S85°50' W	285'
N54°10' W	140'
N84°00' W	305'

South Carolina
Greenville County

Plat Showing
Tract of Land for
Catawba Timber Co.
Allie D. Knight Tract # 521
139 Acres
Scale: 1" = 400' November 5, 1964
Hugh J. Martin
S.C. Reg. LS # 2320

DEC 17 1964
17463

17463 Filed This 17 day of Dec 1964
And Recorded in Vol. 444 Page 153 at 3:54 PM
Ollie Farnsworth
Register Mesne Conveyance Greenville County, S. C.

100
HHH - 153