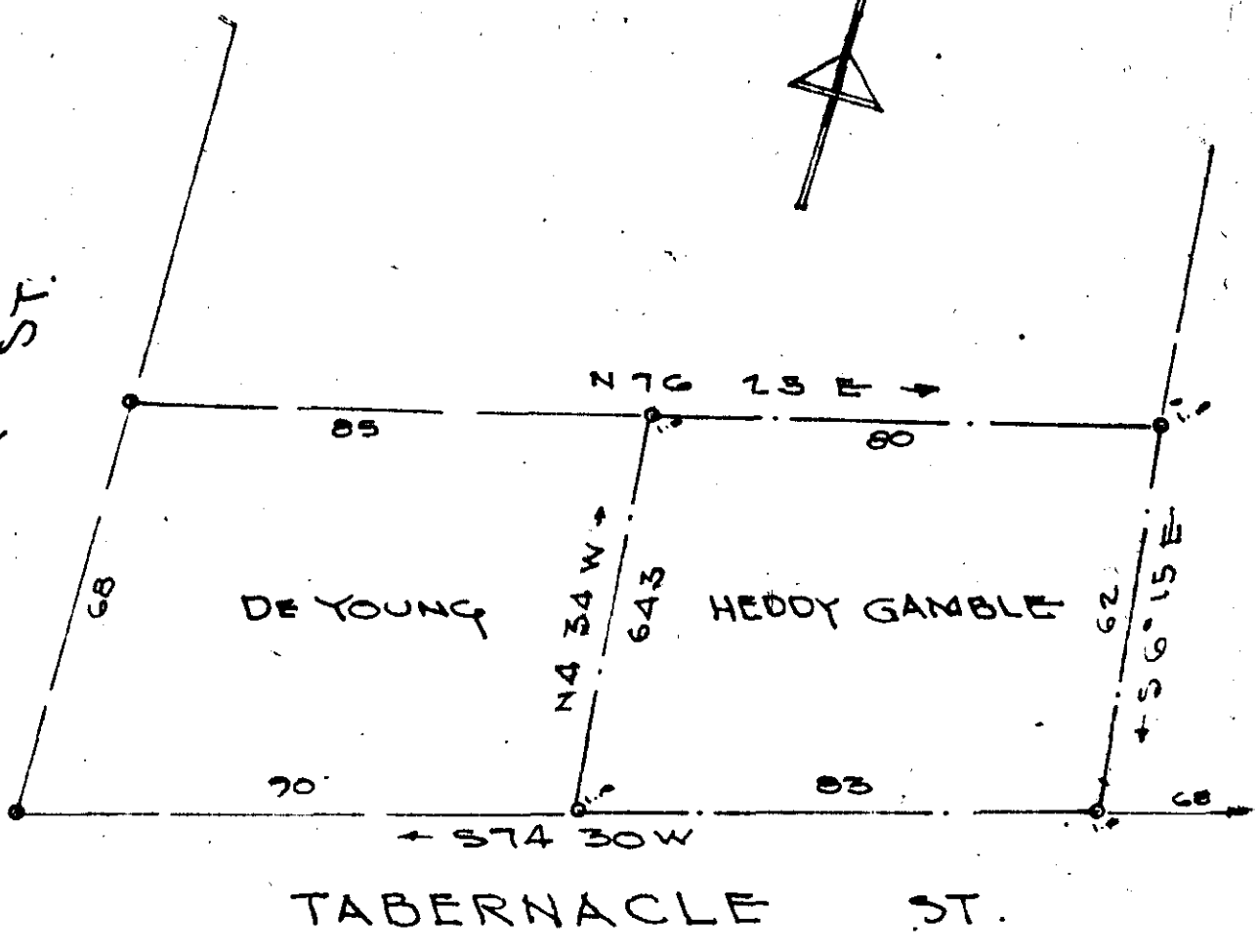


POPLAR ST.



TABERNACLE ST.

FILED
 GREENVILLE CO. S.C.
 JUL 14 9 37 AM 1964
 COLLIE LANSWORTH
 S.M.C.

PROPERTY OF
~~HEDDY~~ HEDDY GAMBLE ^{PELL}
 GREER, S.C.
 Scale 1"=30 JULY 8-1964

JUL 14 1964

1821

C. E. JONES - CIVIL ENGINEER

- 13

504

1821 Filed This 14 day of July 1964
 And Recorded in Vol. 11111 Page 13 at 9:27 AM
 C. E. JONES
 Register Mesne Conveyance Greenville County, S. C.