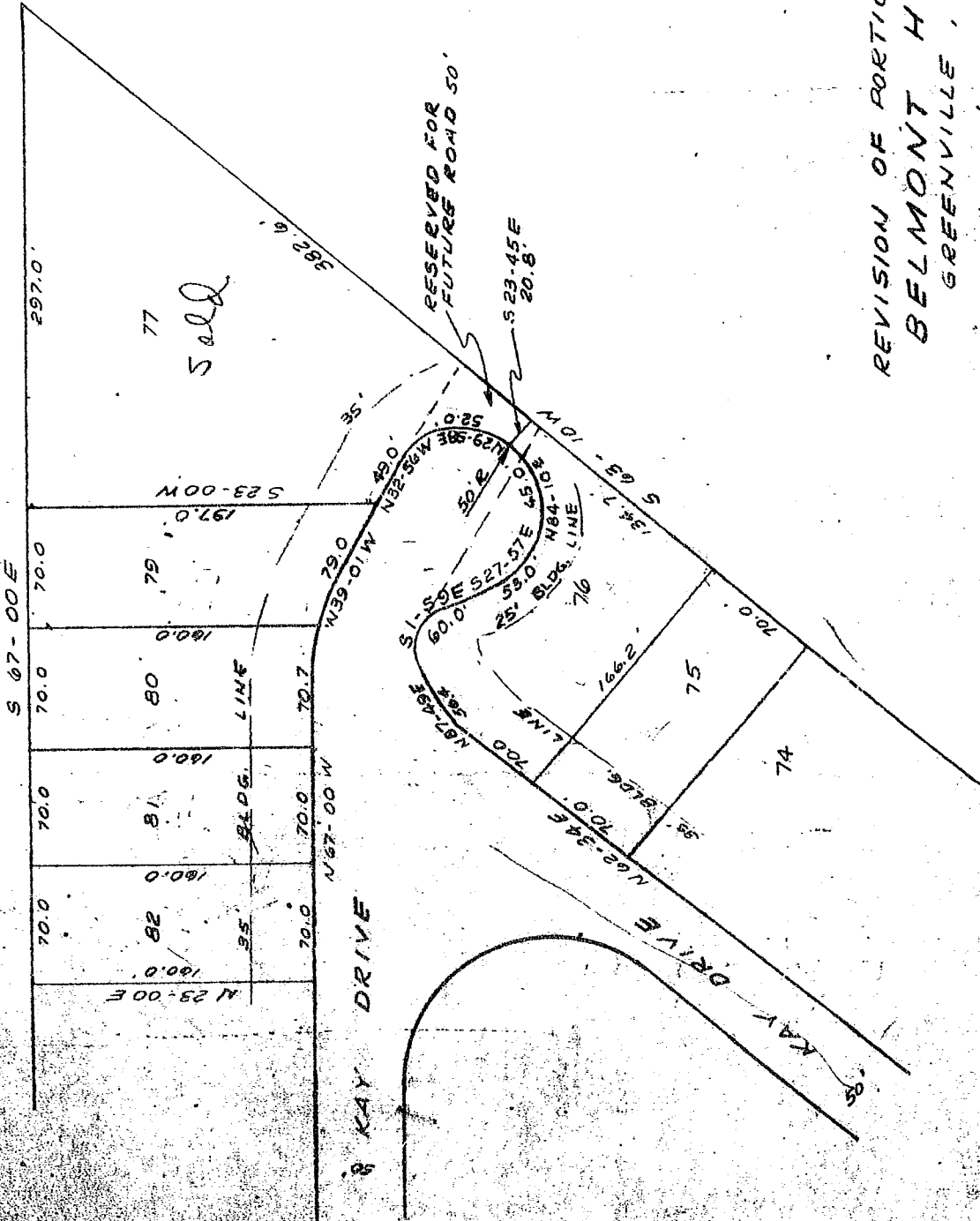


1.00

SEWER COMMISSION



REVISION OF PORTION OF SECTION 719  
BELMONT HEIGHTS  
GREENVILLE, S.C.

SCALE 1" = 100'

OCT. 19, 1966  
H. H. H. H. H.  
K. H. H.

22260

PIEDMONT ENGINEERING SERVICE  
GREENVILLE S.C.