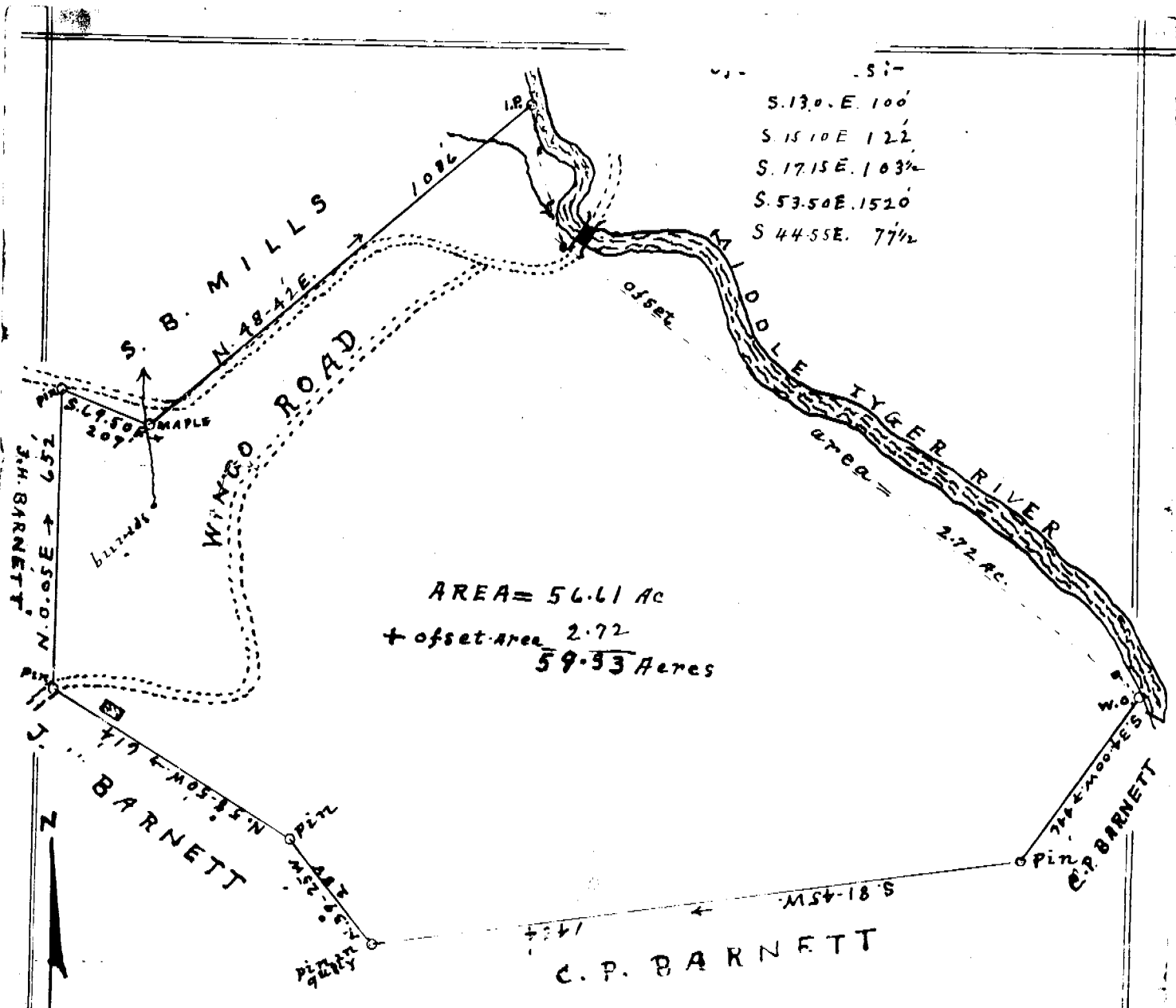


90%



State of South Carolina:
 County of Greenville:

I hereby certify that above plat is a true and accurate representation of a tract of land known as the C.B. Jackson land, surveyed for Earnest T. Barnett. Survey was made from calls in deed of adjoining Land-owners, and established corners.

Situated in County and state aforesaid, in school District No. 13M, about 10 miles north of Greer, S.C.

surveyed by me the 9. day of Sept 1940

J.H. Atkins
 Surveyor.

Scale: 1" = 300'