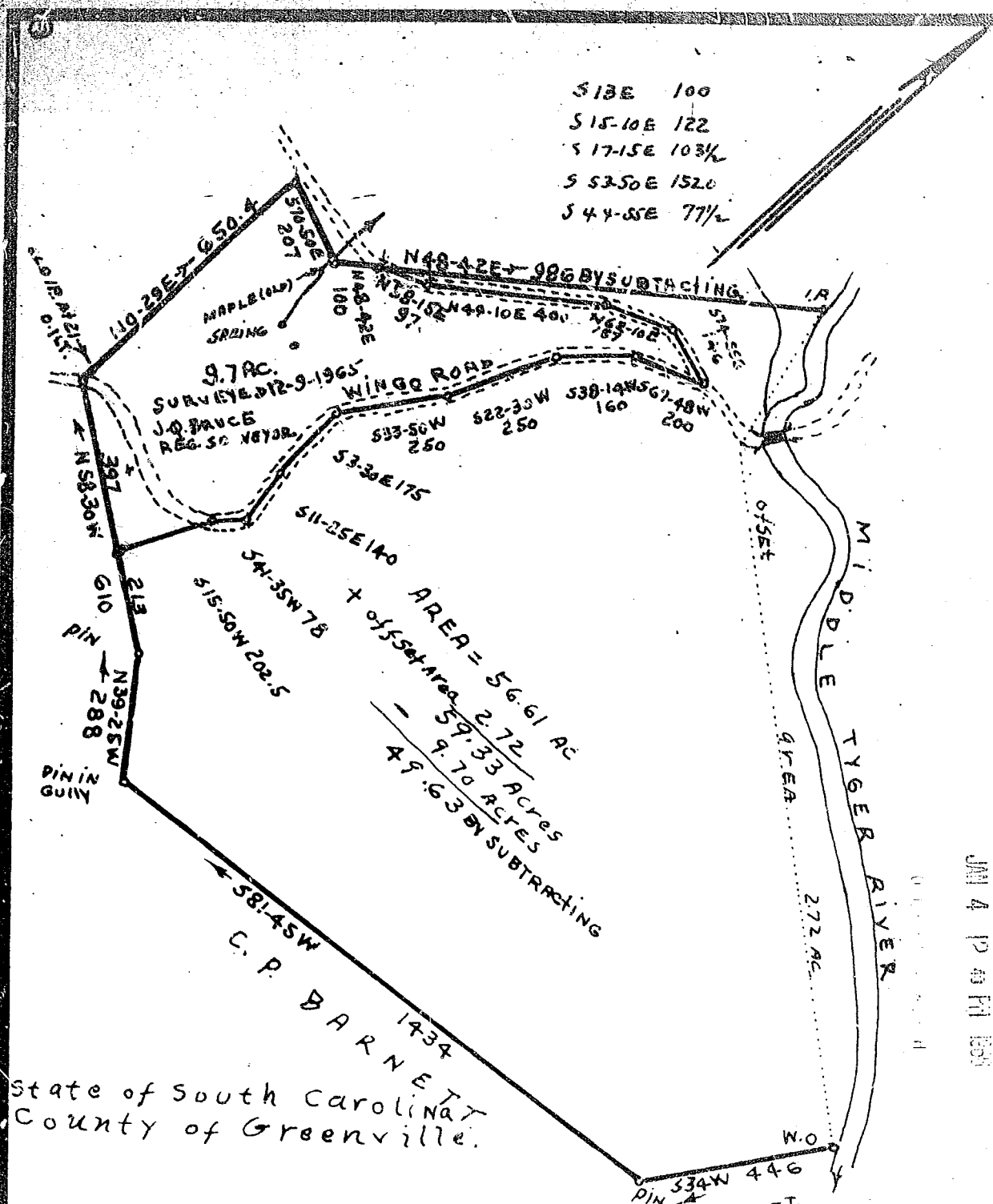


B-5

S 13 E 100
 S 15-10 E 122
 S 17-15 E 103 1/2
 S 53-50 E 152.0
 S 44-55 E 77 1/2



JAN 4 P 40 PM 1965

state of South Carolina
 County of Greenville.

I hereby certify that above Plat is a true and accurate representation of a tract of land known as the C.B. Jackson land. Surveyed for Earnest T. Barnett. Survey was made from calls in deed of adjoining Land owners, and established corners.

Situated in County and State aforesaid in School District No. 13M. about 10 miles north of Greenville, S.C.

Surveyed by me the 9 day of Sept 1940 JAN 4 1965
 Scale - 1" = 300'

COPIED BY J. G. BRUCE
 12-9-1965

19605

J. H. [Signature]
 Surveyor.

Photo 1.00 Recorded January 4, 1966 at 12:40 P. M. #19605