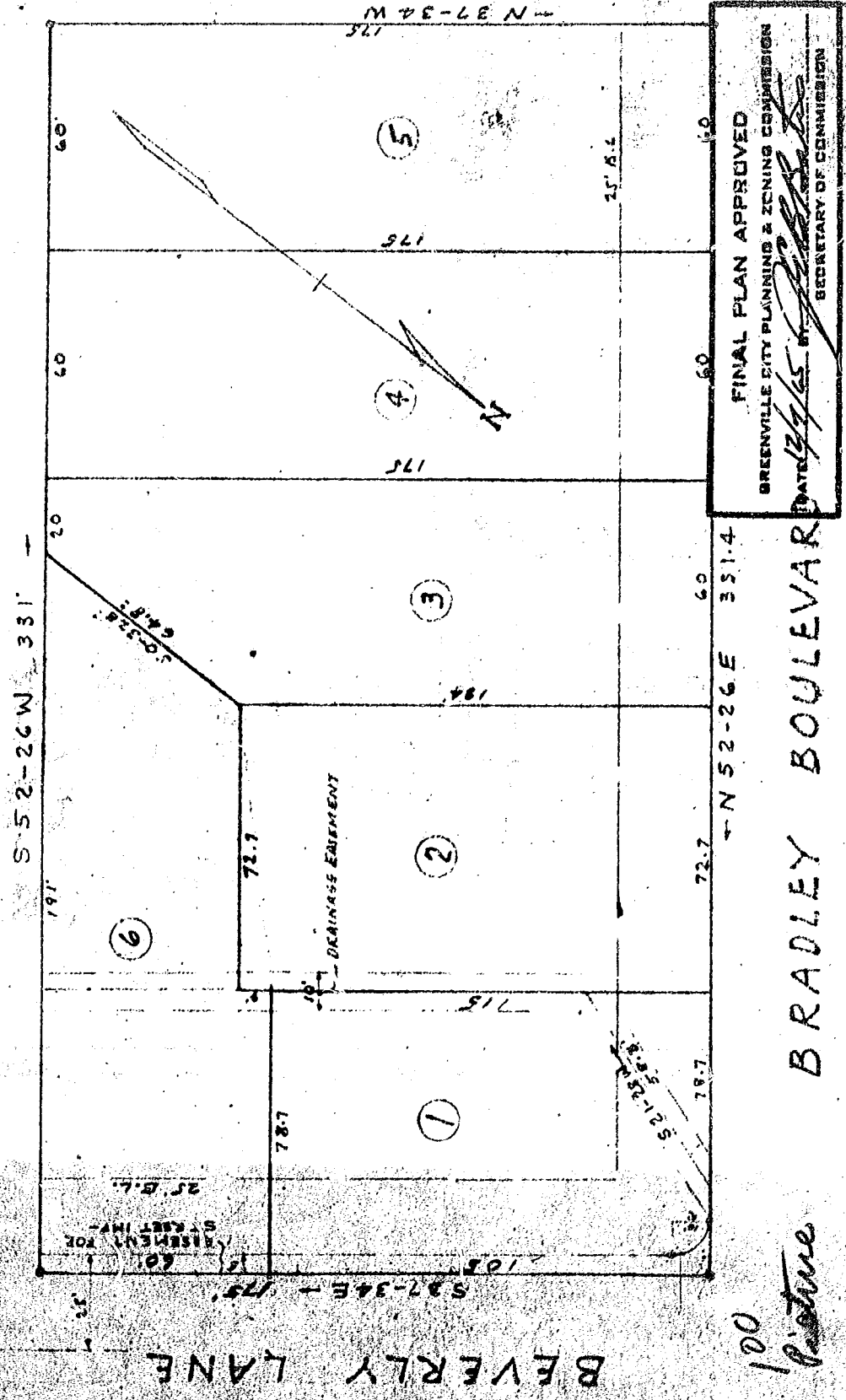


Recorded December 16, 1965 at 9:30 A. M. #18037



S 52-26 W 331'

197'

60'

60'

60'

60'

60'

60'

60'

60'

60'

60'

175

175

175

175

175

175

175

175

175

175

72.7

72.7

72.7

72.7

72.7

72.7

72.7

72.7

72.7

72.7

25' 5.6"

25' 5.6"

25' 5.6"

25' 5.6"

25' 5.6"

25' 5.6"

25' 5.6"

25' 5.6"

25' 5.6"

25' 5.6"

105'

105'

105'

105'

105'

105'

105'

105'

105'

105'

197'

197'

197'

197'

197'

197'

197'

197'

197'

197'

175

175

175

175

175

175

175

175

175

175

175

175

175

175

175

175

175

175

175

175

175

175

175

175

175

175

175

175

175

175

175

175

175

175

175

175

175

175

175

175

175

175

175

175

175

175

175

175

175

175

175

175

175

175

175

175

175

175

175

175

175

175

175

175

175

175

175

175

175

175

175

175

175

175

175

175

175

175

175

175

175

175

175

175

175

175

175

175

175

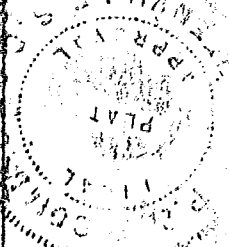
175

FINAL PLAN APPROVED  
 GREENVILLE CITY PLANNING & ZONING COMMISSION  
 DATE 12/15/65 BY [Signature]  
 SECRETARY OF COMMISSION

BRADLEY BOULEVARD  
 N 52-26 E 351.4  
 60'

100  
 Picture

18037  
 REC 16 1965



PROPERTY OF  
 JOE MARTIN & CHARPING  
 GREENVILLE - S.C.  
 SCALE 1"=40' NOV. 1965

THIS IS TO CERTIFY THAT THIS IS AN  
 ACCURATE MAP OF AN ACTUAL SURVEY  
 COMPLETED BY ME DEC. 1965  
 H.C. Clarke

THERE IS A 5' DRAINAGE EASEMENT  
 BASEMENT ALONG EACH SIDE OF ALL  
 REAR SIDE LOT LINES

Rec Plat Book 666-339

BEVERLY LANE

ASSESSMENT FOR  
 S. WEST INT.  
 25' 5.6"

715'

72.7'

197'

60'

60'

60'

175

175

175

175

175

175

175

175

175

175

175

175

175

175

175

175

175

175

175

175

175

175

175

175

175

175

175

175

175

175

175

175

175

175

175

175

175

175

175

175

175

175

175

175

175

175

175

175

175

175

175

175

175

175

175

175

175

175

175

175

175

175

175

175

175

175

175

175

175

175

175

175

175

175

175

175

175

175

175

175

175

175

175

175

175

175

175

175

175

175

175

175

175

175

175

175

175

175

175

175

175

175

175

175

175

175

175

175

175

175

175

175

175

175

175

175

175

175

175

175

175

175

175

175

175

175

175

175

175

175

175

175

175

175

175

175