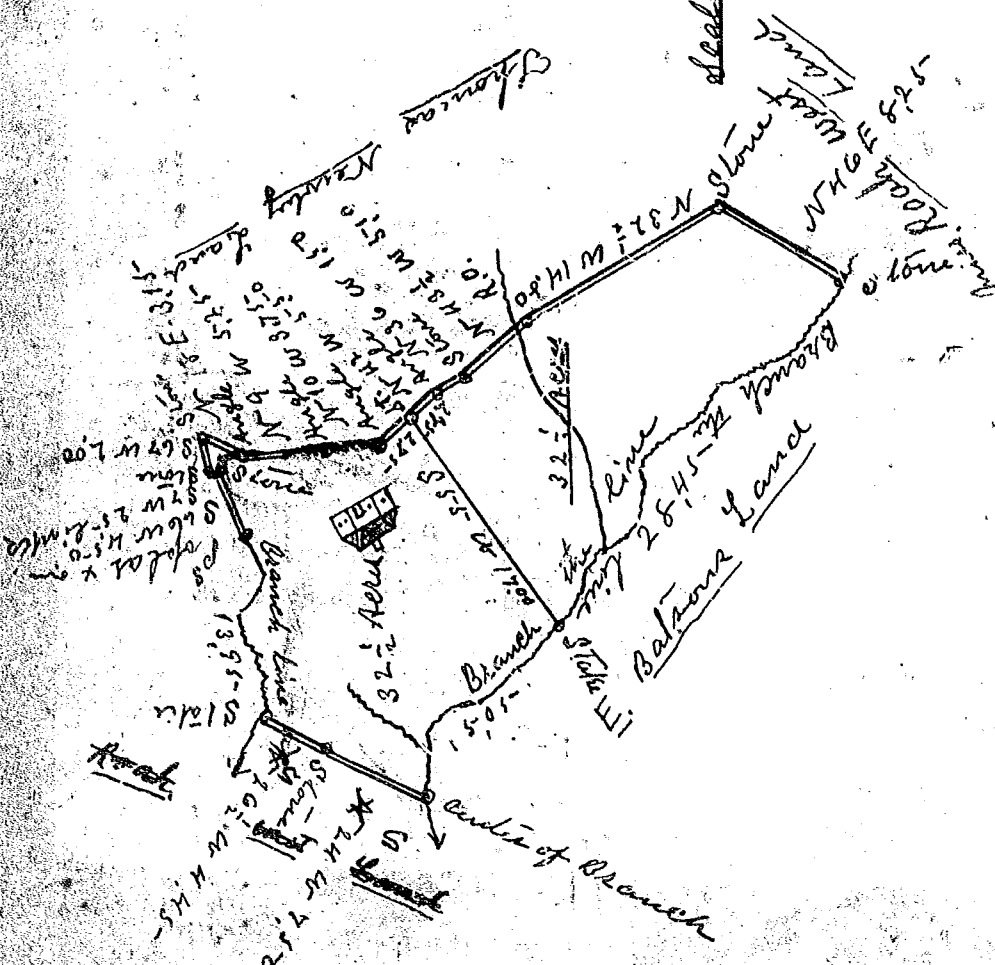


FILED
GREENVILLE CO. S.C.

JUL 22 11 35 AM 1965

OLLIE B. BARNWORTH
H.M.C.

Scale of 10 chs per inch



South Carolina
Greenville County

I have surveyed the above
piece of land for Rosaolph
Burns and find it to contain 65 acres
and has such shape as to contain
as the above Plat show

Surveyed Sept 6 1921

W. A. Hester

Surveyor

Recorded July 22, 1965 at 11:35 A. M. #2651