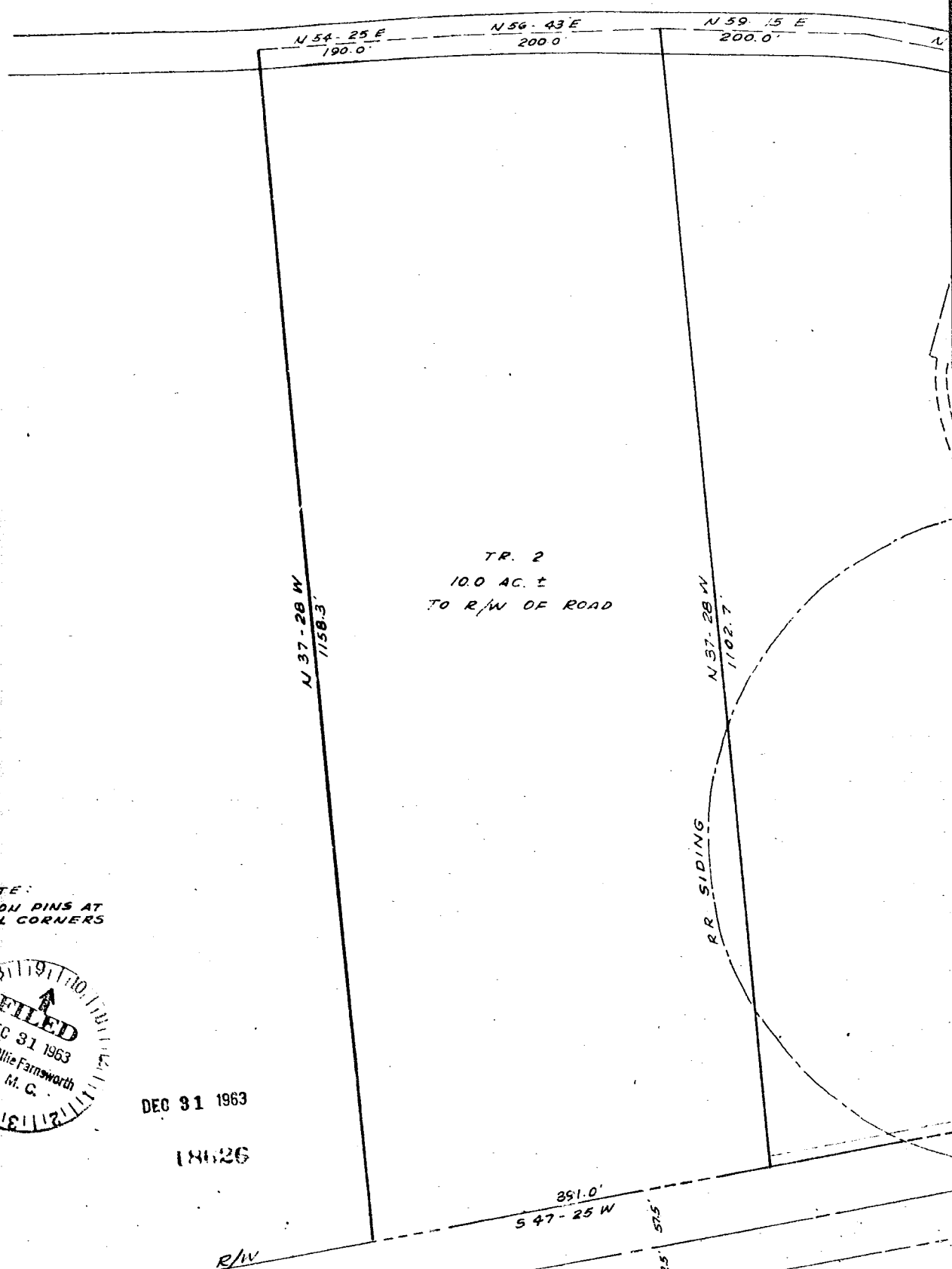


cash



TR. 2
10.0 AC. ±
TO R/W OF ROAD

N 37-28 W
1158.3'

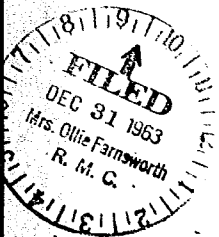
N 57-28 W
1102.7'

RR SIDING

851.0'
S 47-25 W

575'
S 75-42 E

NOTE:
IRON PINS AT
ALL CORNERS



DEC 31 1963

18626

R/W

R/W

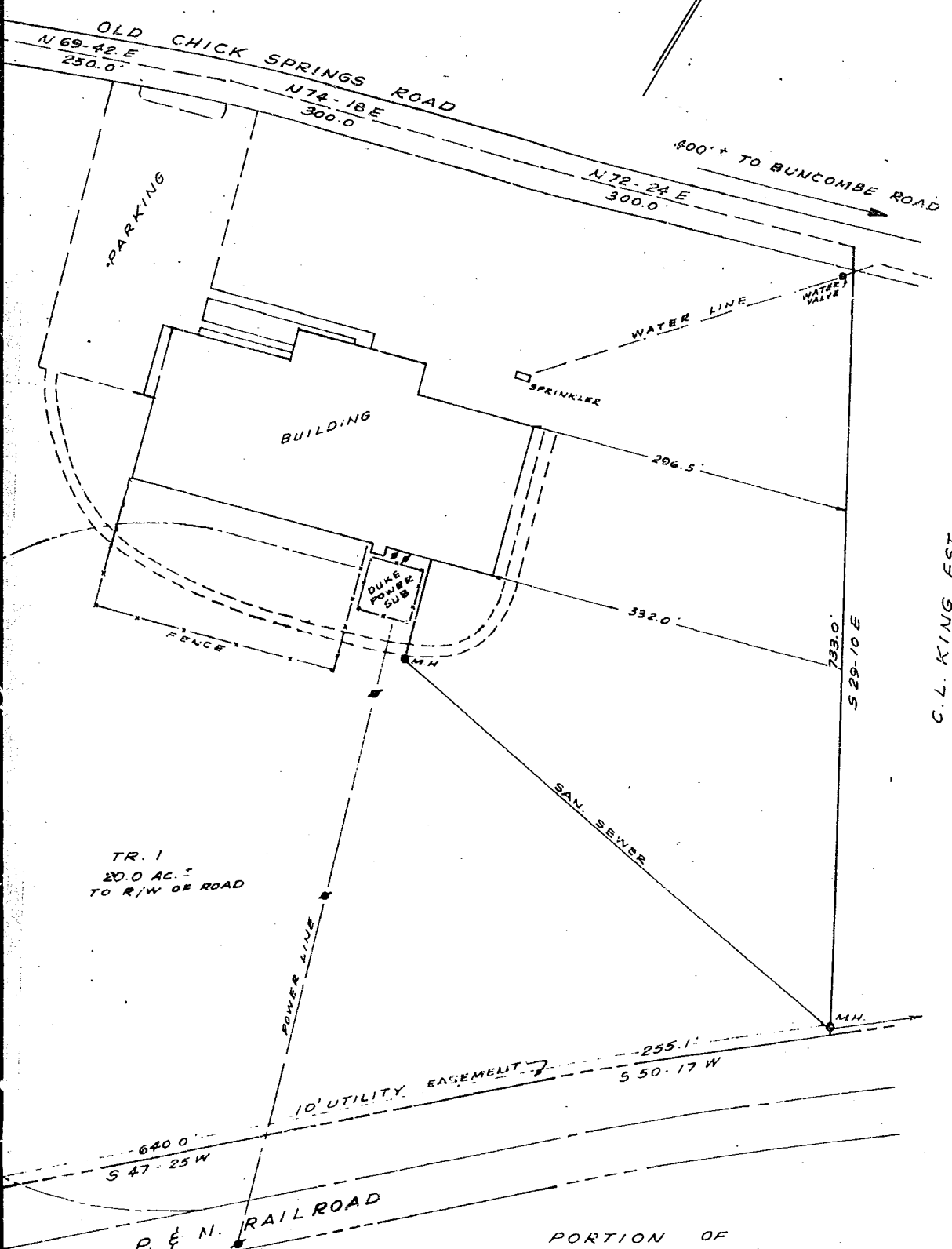
I CERTIFY THAT THE ABOVE
SURVEY IS CORRECT.

Raymond S. ...

Recorded December 31, 1963 at 9:30 A. M. #18626

REG. ENGR. No. 962

7 root



PORTION OF
GENERAL BATTERY & CERAMIC CORP.
 NEAR GREENVILLE, S. C.
 SCALE 1" = 100'
 JULY 1960
 REVISED AUG. 1960
 REVISED FEB. 1961
 REVISED DEC. 1963

PIEDMONT ENGINEERING SERVICE
 GREENVILLE, S. C.

C. L. KING EST.