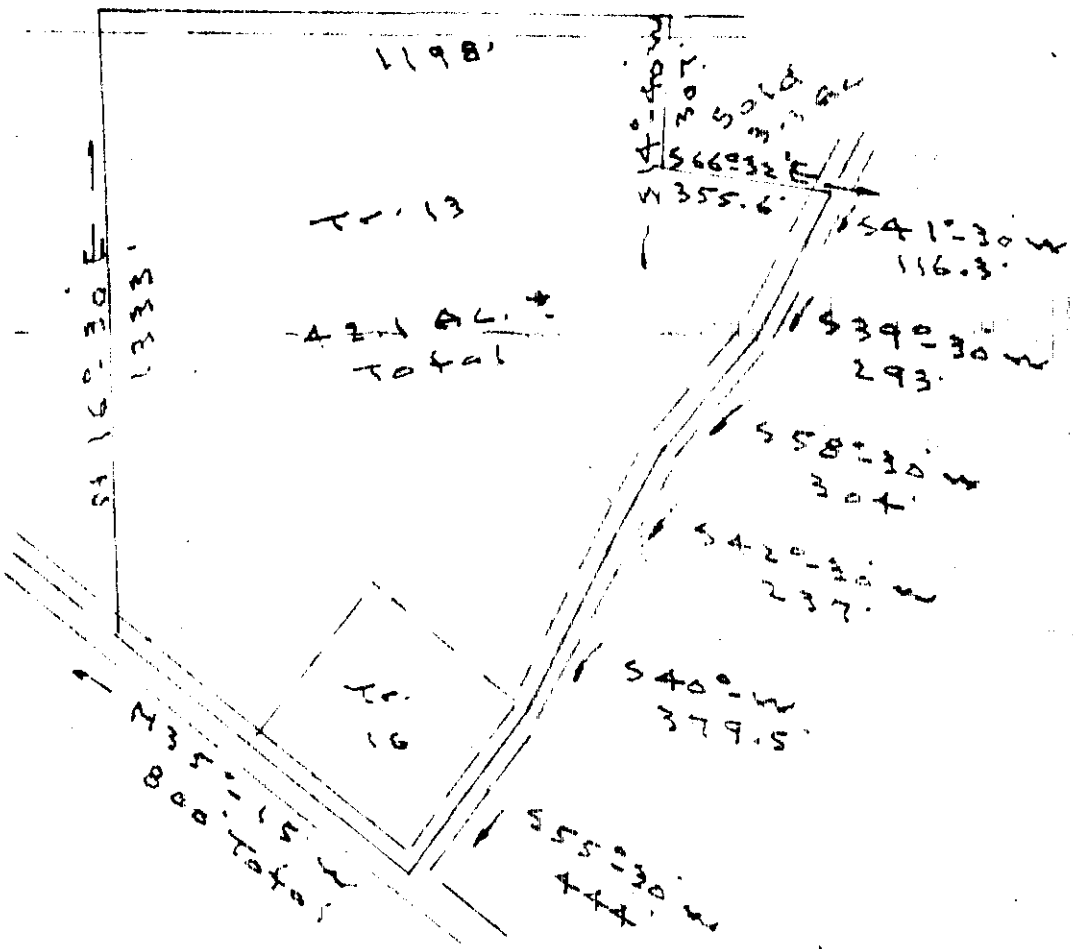


Hwy No. 11
S74°40'E



FILED
GREENVILLE CO. S. C.
OCT 15 4 38 PM 1963
OLLIE E. WORTH
R.M.C.

PROPERTY OF
RUTH M. KELLOGG
Greenville Co. S. C.
Scale 1" = 400' - 9-23-1963

OCT 15 1963
11236

EEE-71 506
6 - [unclear] from plat

J.C. Hill - 805

11236 Filed This 15 day of Oct 1963
And Recorded in Vol. EEE Page 71 at 4:38 PM
Gladis [unclear]
Register Mesne Conveyance Greenville County, S. C.