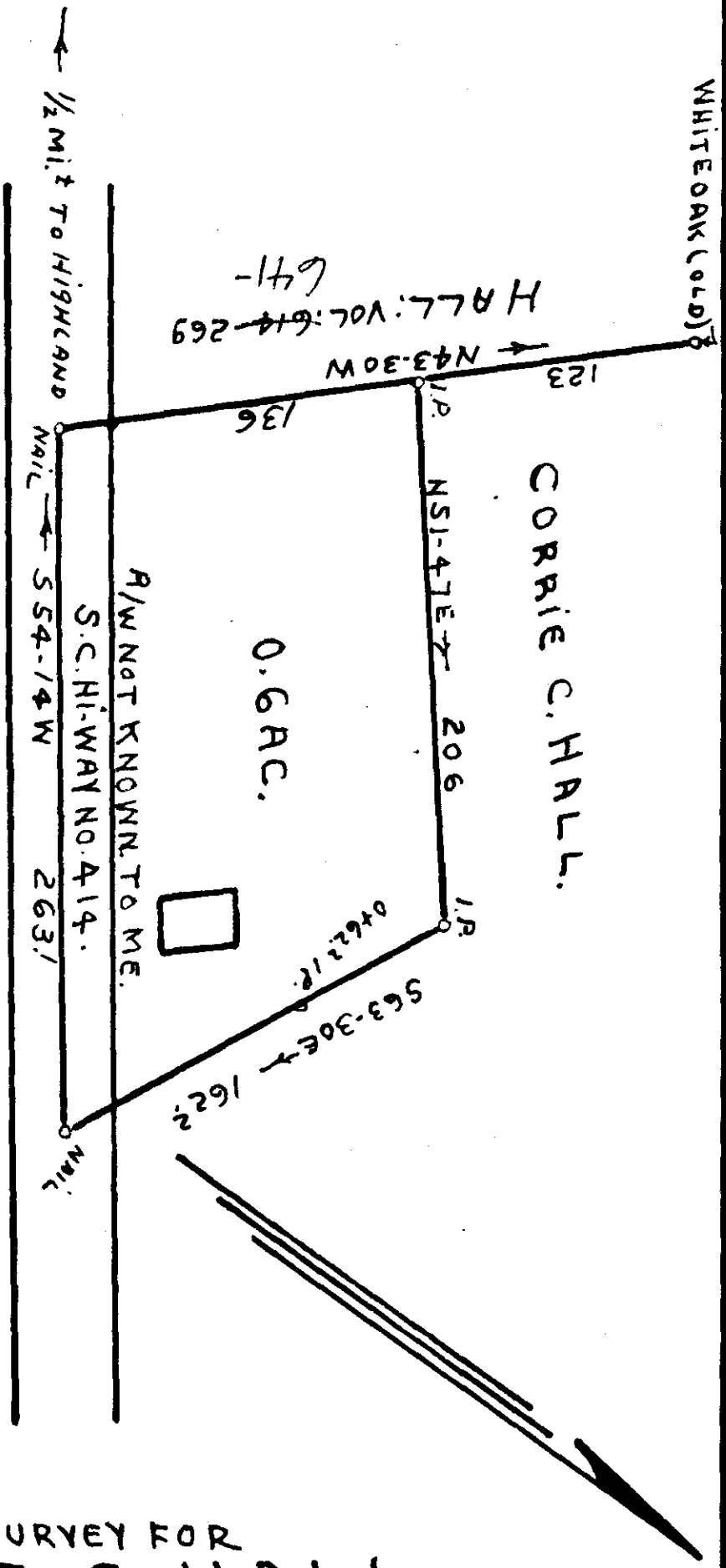


2



LAND SURVEY FOR
CORRIE C. HALL,
 G'VILLE, CO. S. C. PT. VOL. 623-313.
 9-6-1963. 1"=60'. J. Q. BRUCE: REG. SUR.

OCT 4 - 1963 ✓
 10082

EEE-53

FILED
 GREENVILLE CO. S. C.
 OCT 4 1 12 PM 1963
 ALLIE FARMWORTH
 R.M.O.

#10082 Filed This 4 Oct. 63
 and Recorded in Vol. EEE 53 1:12 P.
 Allie Farmworth
 Register Mesne Conveyance

53