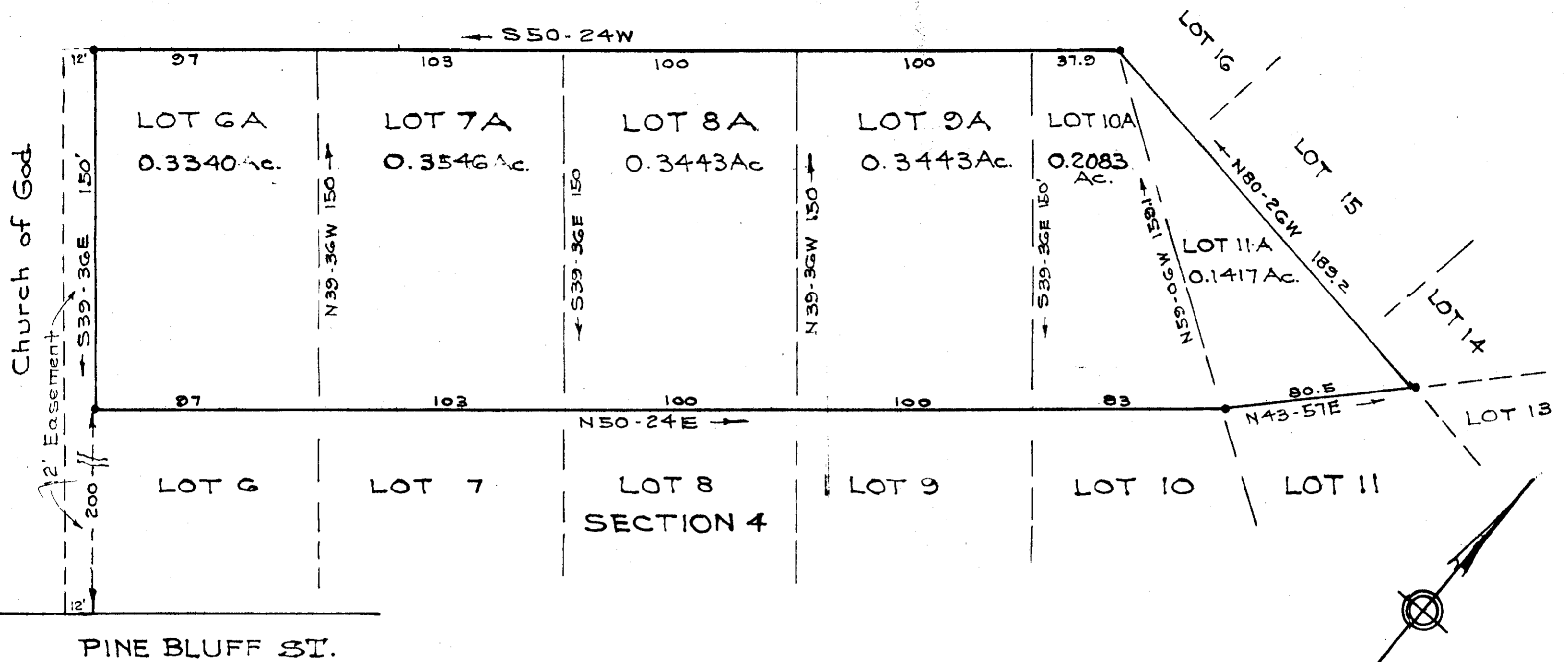


J. P. STEVENS & CO. INC.



PROPERTY OF
 J. P. STEVENS & CO. INC.
 GREENVILLE COUNTY
 PIEDMONT S. C.
 Scale 1" = 40' November 1965

DALTON & NEVES, ENGINEERS
 GREENVILLE S. C.

FILED
 APR 7 3 55 PM 1966
 CLERK OF COURTS
 GREENVILLE S. C.

Plat Revised Feb. 1966
 Iron Pins at all Corners

150
 BBB-158

PLAT NO. 224

38902 Filed This 7 day of April 1966
 And Recorded in Vol. BBB Page 158 at 353 P.M.
 Register Mesne Conveyance Greenville County, S. C.