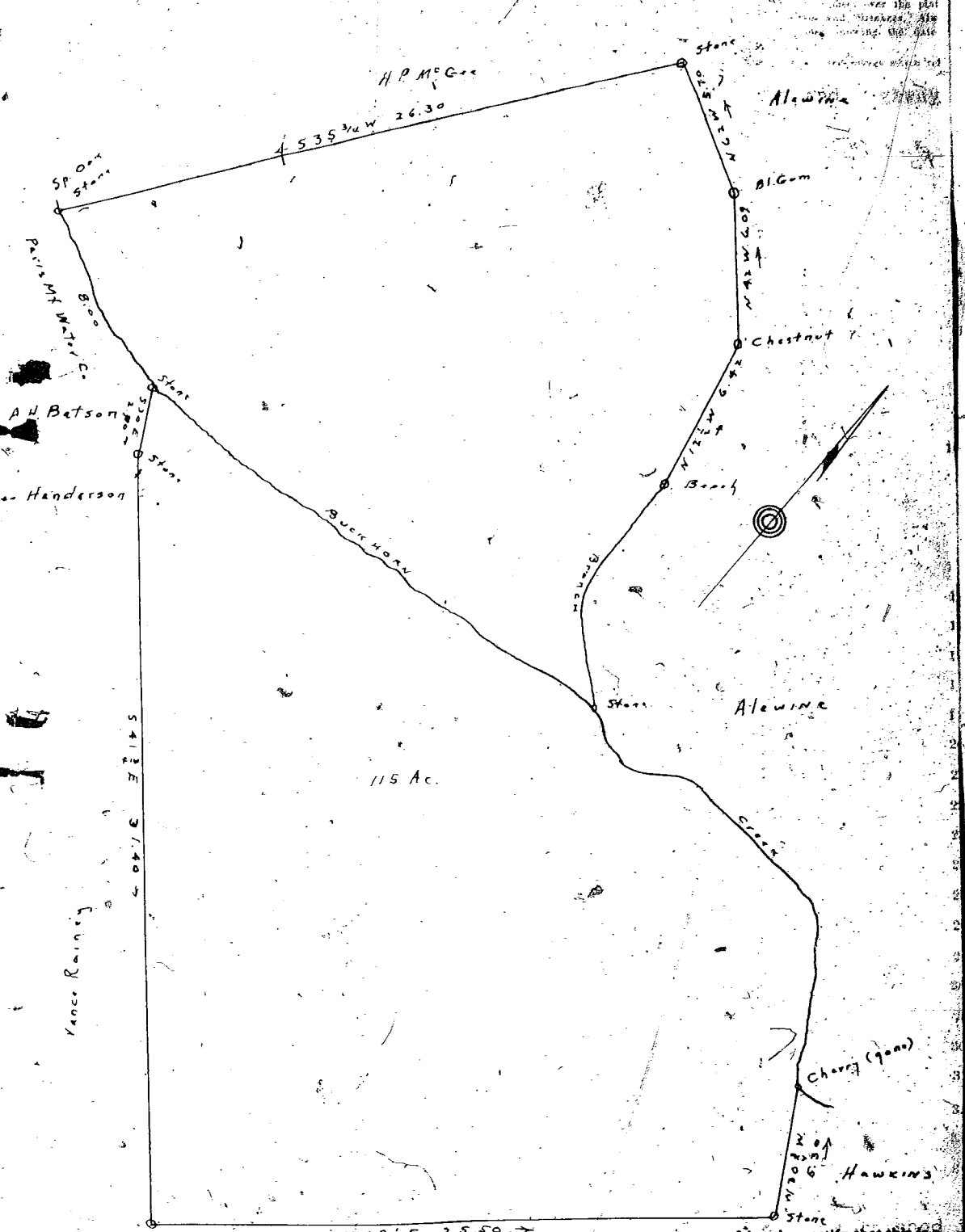


ATLANTIC JOINT STOCK LAND BANK OF GEORGIA

C. M. FURMAN, JR.  
 CIVIL ENGINEER  
 GREENVILLE, S. C.  
 OFFICE 11 W. COURT STREET  
 PHONES OFFICE 1806  
 RES 2742-W

PROPERTY  
 OF  
**C. B. ELLISON**

HIGHWAY  
 SEWER  
 STREETS  
 SIDEWALKS  
 DRAINAGE  
 LAND SURVEYS  
 SUB-DIVISIONS  
 TERRACES



H.P.M.C. Co.

Alewine

Bl. Gum

Chestnut

Berry

Alewine

115 Ac.

Cherry (young)

Hawkins

J. RosAMOND

I hereby certify that this is a true and accurate survey of the above described property.

Scale 1" = 5 CH. Date \_\_\_\_\_

C. M. FURMAN, JR.  
CIVIL ENGINEER  
GREENVILLE, S. C.

OFFICE: 11 W. COURT STREET

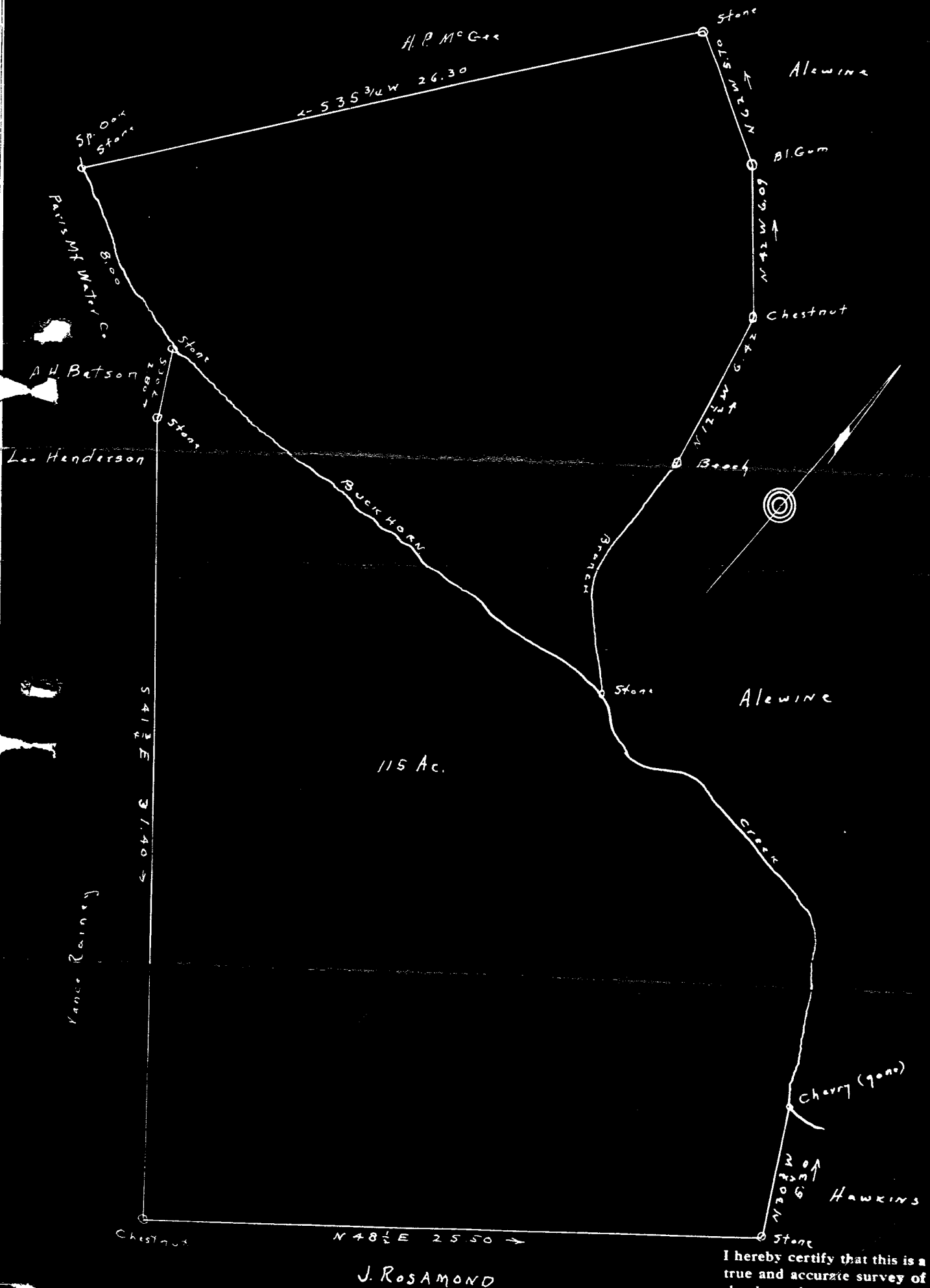
PHONES: OFFICE 1506  
RES 2742-W

# PROPERTY

OF

# C. B. ELLISON

HIGHWAYS  
SEWERS  
STREETS  
SIDEWALKS  
DRAINAGE  
LAND SURVEYS  
SUB-DIVISIONS  
TERRACES



I hereby certify that this is a true and accurate survey of the above described property

Scale 1" = 5 CH. Date \_\_\_\_\_

3565 Filed This 3 day of Aug 19 1922  
And Recorded in Vol 222 Page 151 at \_\_\_\_\_  
C. M. Furman, Jr.  
Register of Deeds Greenville County, S. C.