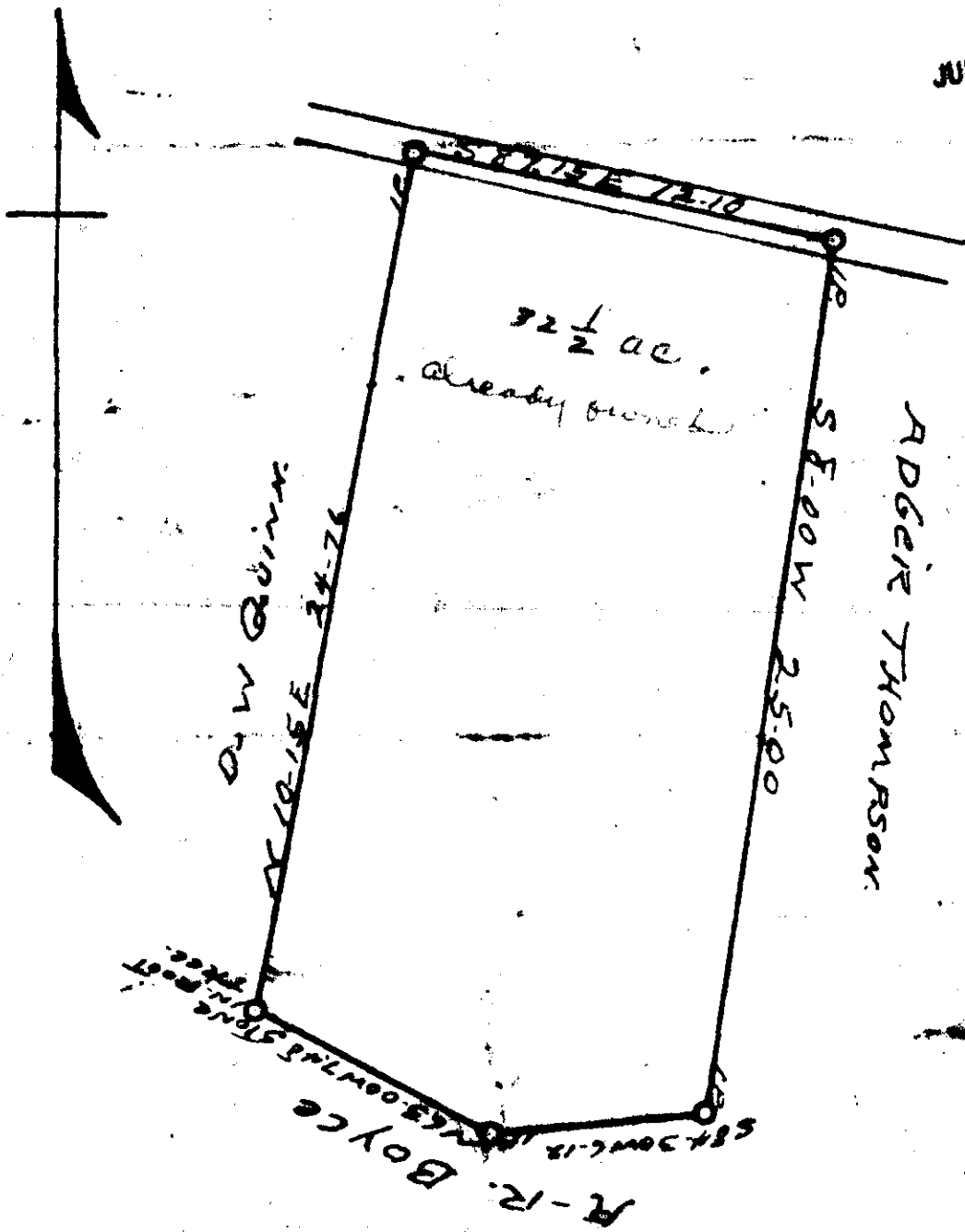


AUG 3 1952

JUN 8

JUL 17 1952



State of South Carolina.
 Greenville County.
 Plat of land belonging to
 R. J. Owens, containing (32.25)
 acres more or less, above land
 purchased from H. B. Rhodes
 Surveyed Feb 16th 1948.
 J. Cole Smith

FILED
 GRIFFINVILLE, S. C.
 AUG 3 12 56 PM 1952
 CLERK OF COURTS
 NORTH

AAA-145

325 50 3485 Filed This 3rd day of July 1952
 and Records in Vol. 117 Page 145 of ...
 J. Cole Sawawera
 Register of the Land Office Greenville County, S. C.

145

145