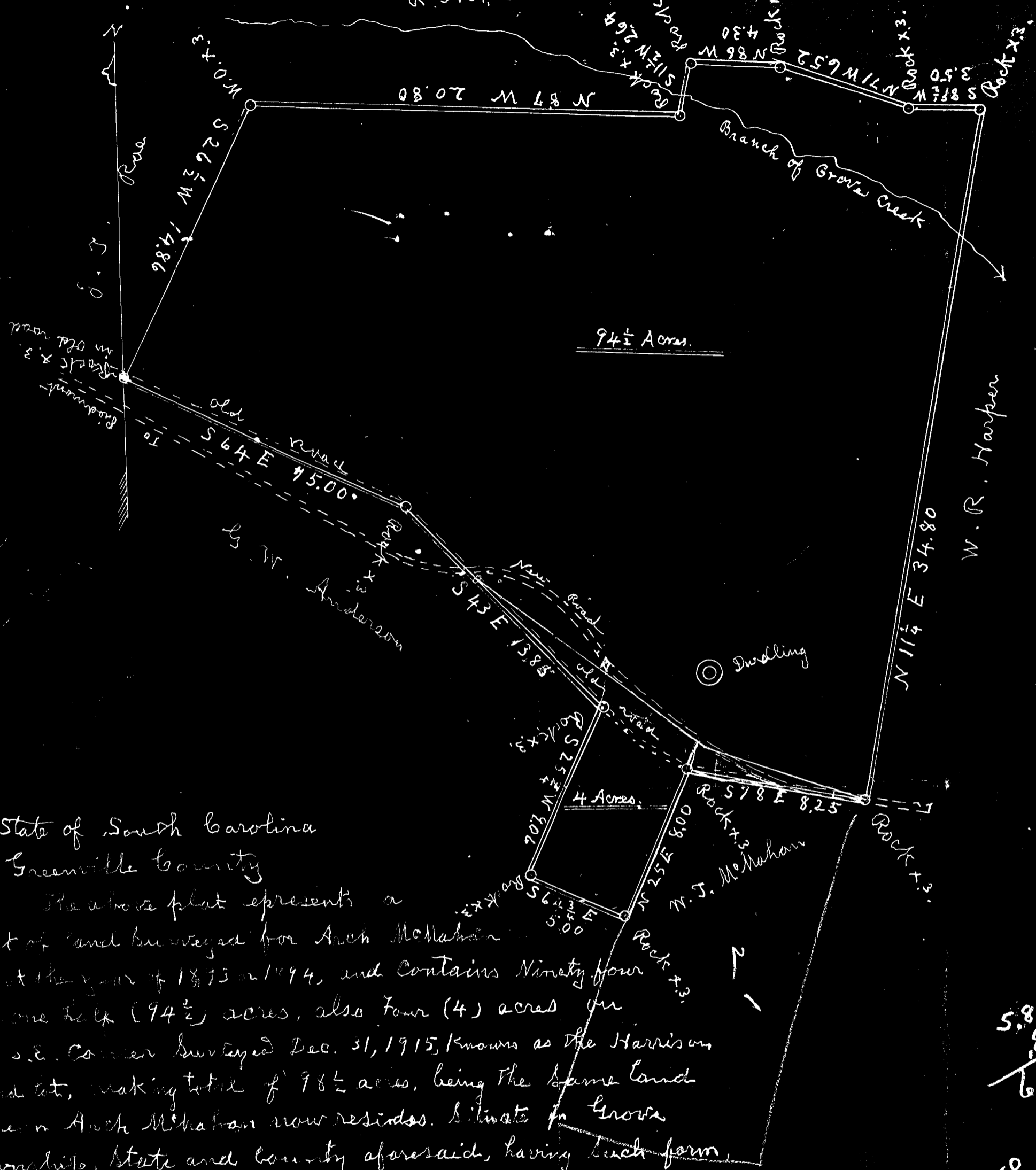


Scale 5 Chains per inch

216797
Vol J. Owens

R. M. Cleveland + Estate



MAR 6 1962

State of South Carolina
Greenville County

The above plat represents a tract of land surveyed for Arch McMahon about the year of 1873 or 1894, and contains Ninety four and one half (94 1/2) acres, also Four (4) acres on the S.E. Corner surveyed Dec. 31, 1915, known as the Harrison land lot, making total of 98 1/2 acres, being the same land owned by Arch McMahon now resides. Situate in Grove Township, State and County aforesaid, having such form, marks and bounds as the above plat represents.

This March 14, 1918.

Wm. J. Lee Surveyor.

5.87
 6.89

 6.76 ac

98.50
 6.76

 91.74 ac

23941 Filed This 28 day of Mar. 1962
 and Recorded in Vol. 1111 Page 33 at _____

 Register Mesne Conveyance Greenville County, S. C.