

22296

GREENVILLE

MAR 10 8 50 AM 1962

OLLIE FARNSWORTH
R.M.C.

FORMERLY ERBERT MOSTELLER.

N. 20° 45' E.
2100'

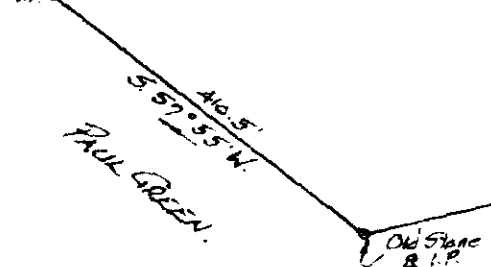
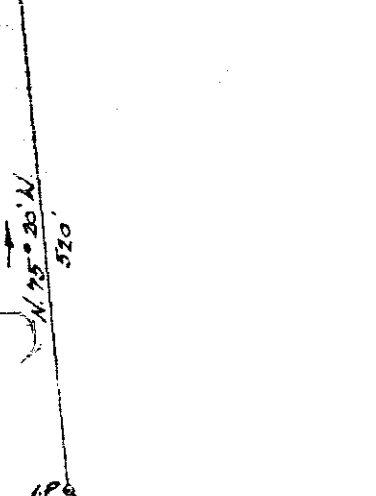
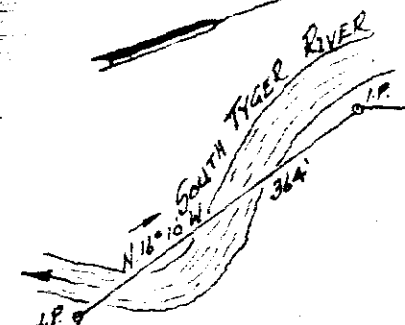
38.69 ACRES.
1.12 " (In Tower line R/W).
37.57 ACRES.

PROPERTY OF
LOUIS A. SMITH.

Located approx 4 miles North of Greer, S.C.

ONEAL TOWNSHIP GREENVILLE COUNTY.
SOUTH CAROLINA.

SCALE: 1" = 200 FEET. MARCH 9 1962.
Survey made March 1 & 2, 1962.



1313'
S. 6° 26' W

JOHN HOWARD.

1 P. 15 7' Old Well

1 P. 16 7' Old Well

1 P. 21 7' Old Well
1 P. 22 7' Old Well
1 P. 23 7' Old Well
1 P. 24 7' Old Well
1 P. 25 7' Old Well
1 P. 26 7' Old Well
1 P. 27 7' Old Well
1 P. 28 7' Old Well
1 P. 29 7' Old Well
1 P. 30 7' Old Well
1 P. 31 7' Old Well
1 P. 32 7' Old Well
1 P. 33 7' Old Well
1 P. 34 7' Old Well
1 P. 35 7' Old Well
1 P. 36 7' Old Well
1 P. 37 7' Old Well
1 P. 38 7' Old Well
1 P. 39 7' Old Well
1 P. 40 7' Old Well
1 P. 41 7' Old Well
1 P. 42 7' Old Well
1 P. 43 7' Old Well
1 P. 44 7' Old Well
1 P. 45 7' Old Well
1 P. 46 7' Old Well
1 P. 47 7' Old Well
1 P. 48 7' Old Well
1 P. 49 7' Old Well
1 P. 50 7' Old Well
1 P. 51 7' Old Well
1 P. 52 7' Old Well
1 P. 53 7' Old Well
1 P. 54 7' Old Well
1 P. 55 7' Old Well
1 P. 56 7' Old Well
1 P. 57 7' Old Well
1 P. 58 7' Old Well
1 P. 59 7' Old Well
1 P. 60 7' Old Well
1 P. 61 7' Old Well
1 P. 62 7' Old Well
1 P. 63 7' Old Well
1 P. 64 7' Old Well
1 P. 65 7' Old Well
1 P. 66 7' Old Well
1 P. 67 7' Old Well
1 P. 68 7' Old Well
1 P. 69 7' Old Well
1 P. 70 7' Old Well
1 P. 71 7' Old Well
1 P. 72 7' Old Well
1 P. 73 7' Old Well
1 P. 74 7' Old Well
1 P. 75 7' Old Well
1 P. 76 7' Old Well
1 P. 77 7' Old Well
1 P. 78 7' Old Well
1 P. 79 7' Old Well
1 P. 80 7' Old Well
1 P. 81 7' Old Well
1 P. 82 7' Old Well
1 P. 83 7' Old Well
1 P. 84 7' Old Well
1 P. 85 7' Old Well
1 P. 86 7' Old Well
1 P. 87 7' Old Well
1 P. 88 7' Old Well
1 P. 89 7' Old Well
1 P. 90 7' Old Well
1 P. 91 7' Old Well
1 P. 92 7' Old Well
1 P. 93 7' Old Well
1 P. 94 7' Old Well
1 P. 95 7' Old Well
1 P. 96 7' Old Well
1 P. 97 7' Old Well
1 P. 98 7' Old Well
1 P. 99 7' Old Well
1 P. 100 7' Old Well

NOTE: Information taken from plot of S.D. Masteller property made by J.H. Atkins Sept 1940. Also from plot of Cornwell L. Cooper property, made by H.S. Brackman Feb 9 1957.

John A. Simmons, Reg. Surveyor #2212. GREENVILLE, S.C.

AAA-23

22296 filed Third day of MARCH 1962
and Recorded on Vol. 118 Page 23 at
Register Merrie Converse Greenville County, S.C.