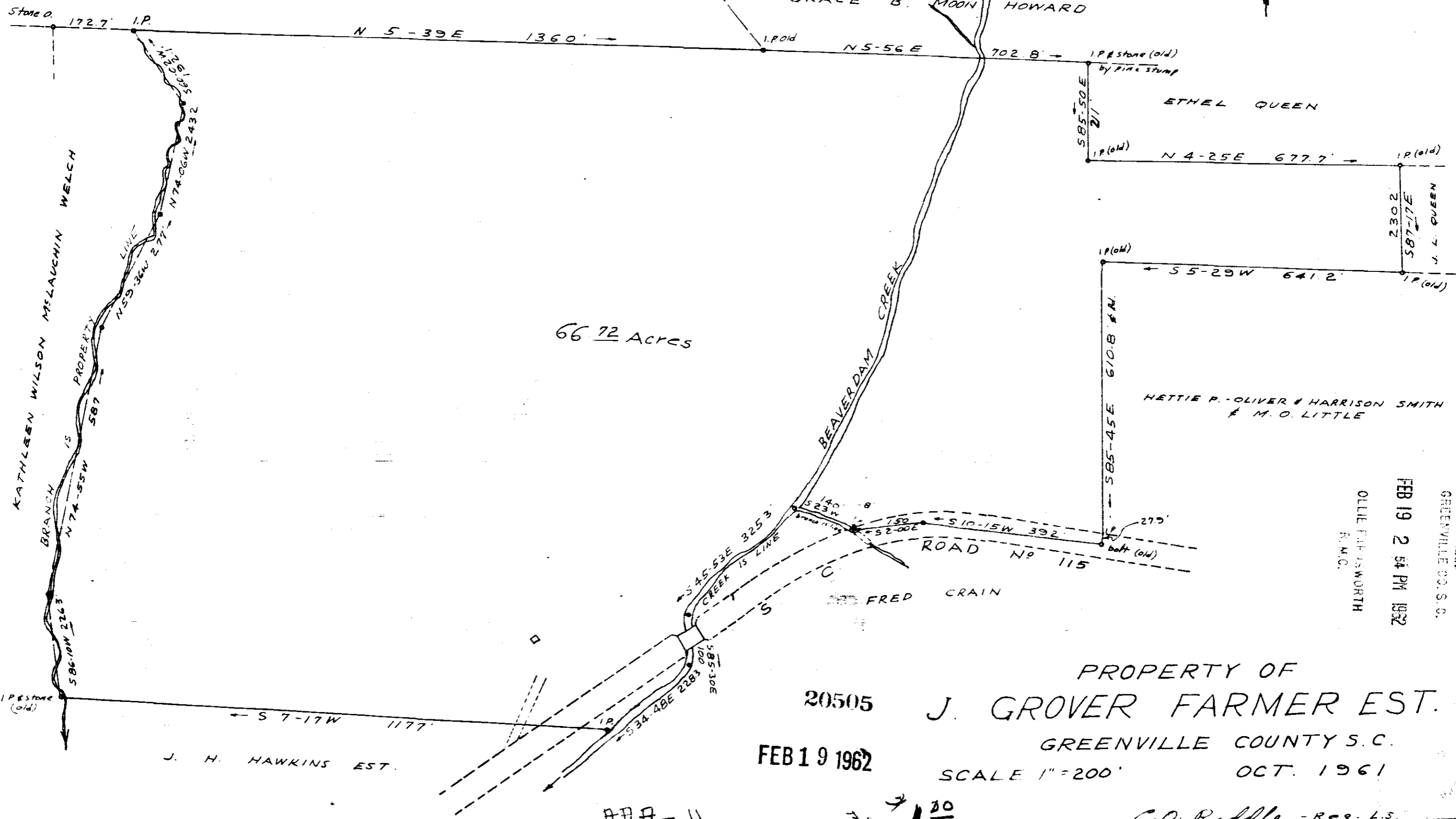
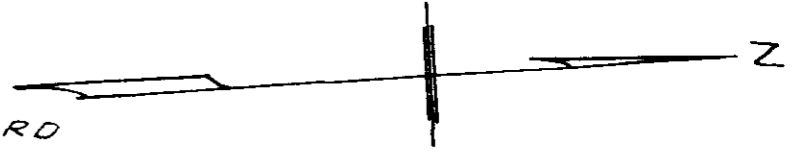


ORVILLE H. FISHER & FRANCES F. LOGAN

GRACE B. MOON HOWARD



66.72 Acres

FILED
GREENVILLE CO. S. C.
FEB 19 2 54 PM 1962
OLLIE FERGUSON
R.M.C.

PROPERTY OF
J. GROVER FARMER EST.
GREENVILLE COUNTY S. C.
SCALE 1" = 200'
OCT. 1961

20505
FEB 19 1962

AAA-11

300 1/20

C.O. Riddle - Reg. L.S.

F.B.D-61

20505 Filed This 19 day of Feb. 1962
and Recorded in Vol. AAA Page 11 at
C.O. Riddle
Register Merse Corporation Greenville County, S. C.