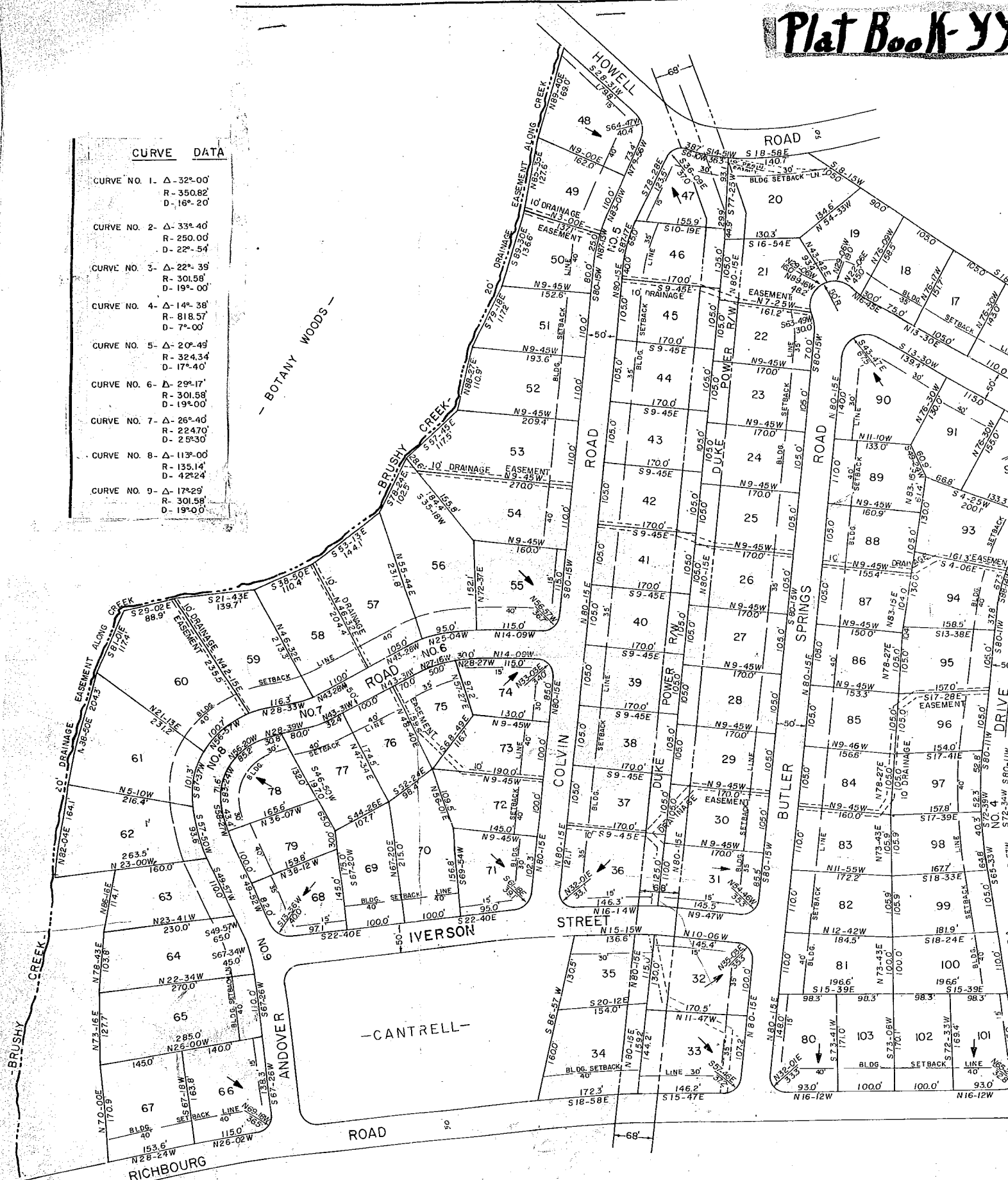


## CURVE DATA

CURVE NO. 1.	Δ- 32°-00'
	R- 350.82'
	D- 16°-20'
CURVE NO. 2.	Δ- 33°-40'
	R- 250.00'
	D- 22°-54'
CURVE NO. 3.	Δ- 22°-39'
	R- 301.58'
	D- 19°-00'
CURVE NO. 4.	Δ- 14°-38'
	R- 818.57'
	D- 7°-00'
CURVE NO. 5.	Δ- 20°-49'
	R- 324.34'
	D- 17°-40'
CURVE NO. 6.	Δ- 29°-17'
	R- 301.58'
	D- 19°-00'
CURVE NO. 7.	Δ- 26°-40'
	R- 224.70'
	D- 25°-30'
CURVE NO. 8.	Δ- 113°-00'
	R- 135.14'
	D- 42°-24'
CURVE NO. 9.	Δ- 17°-29'
	R- 301.58'
	D- 19°-00'

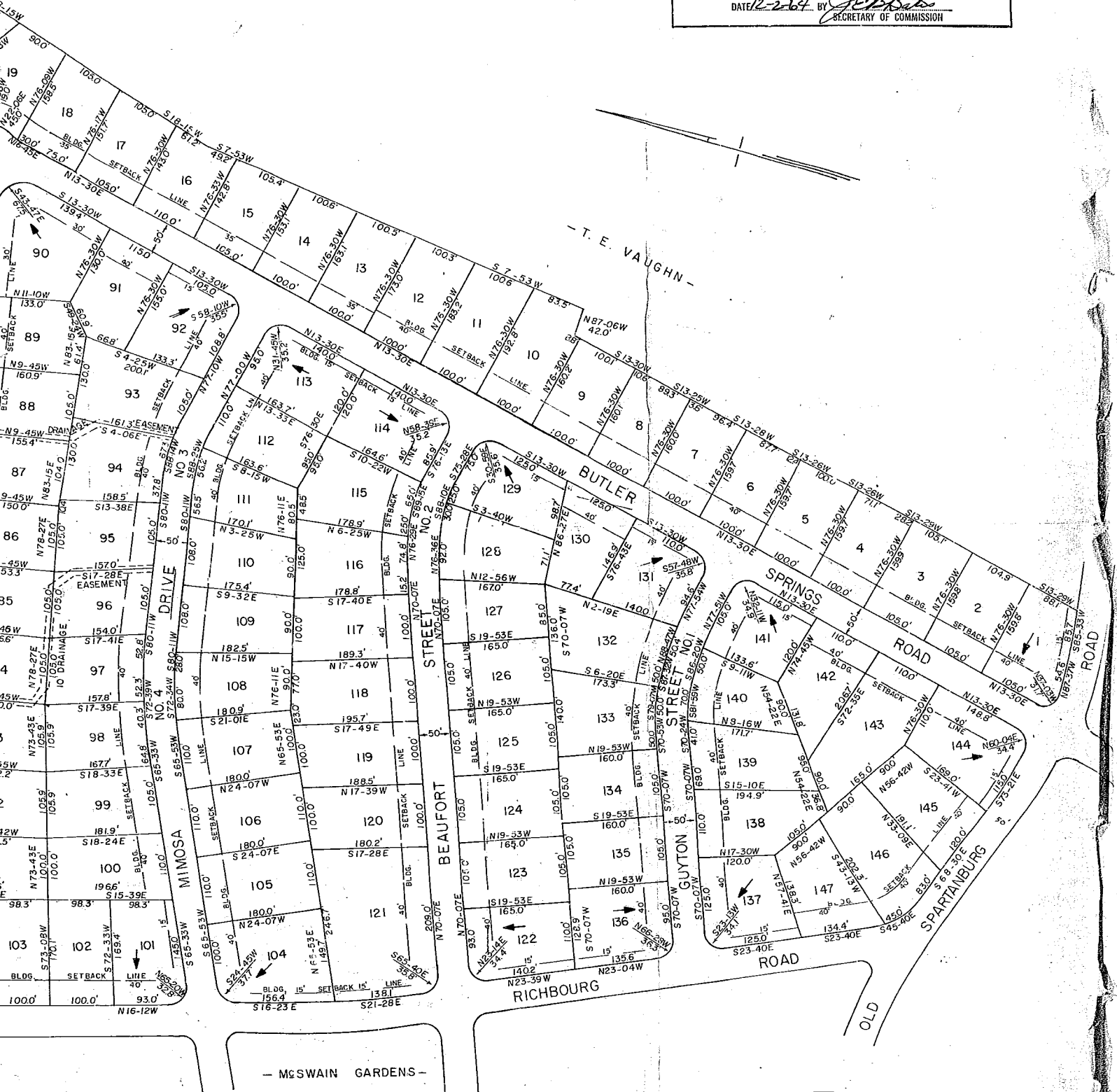


88-187

## REVISED PLAT HERITAGE HILL

NEAR GREENVILLE, S. C.  
SCALE 1" = 100' MAY 26, 1964

Plat Commission Approval 6/1/64  
**FINAL PLAN APPROVED**  
 GREENVILLE CITY PLANNING & ZONING COMMISSION  
 DATE 12-2-64 BY *JCB*  
 SECRETARY OF COMMISSION



PLAT  
 GE HILL  
 GREENVILLE, S. C.  
 MAY 26, 1964  
 ARCHITECTS  
 S. C.

*Andrew J. Davis*  
 REG. ENGR. NO. 962

THIS IS TO CERTIFY THAT I AM THE OWNER OF THIS PROPERTY AND APPROVE OF THE SUBDIVISION AS SHOWN HEREON.  
*W. T. M. Endergaster, Inc.*  
 by *Elmer G. McCall, Jr.*

→ DIRECTION TO FACE OF PLAT  
 See Previous Plat See  
 Book 88 Page 187