

Parcel A

Cor No Bearing Distance Description

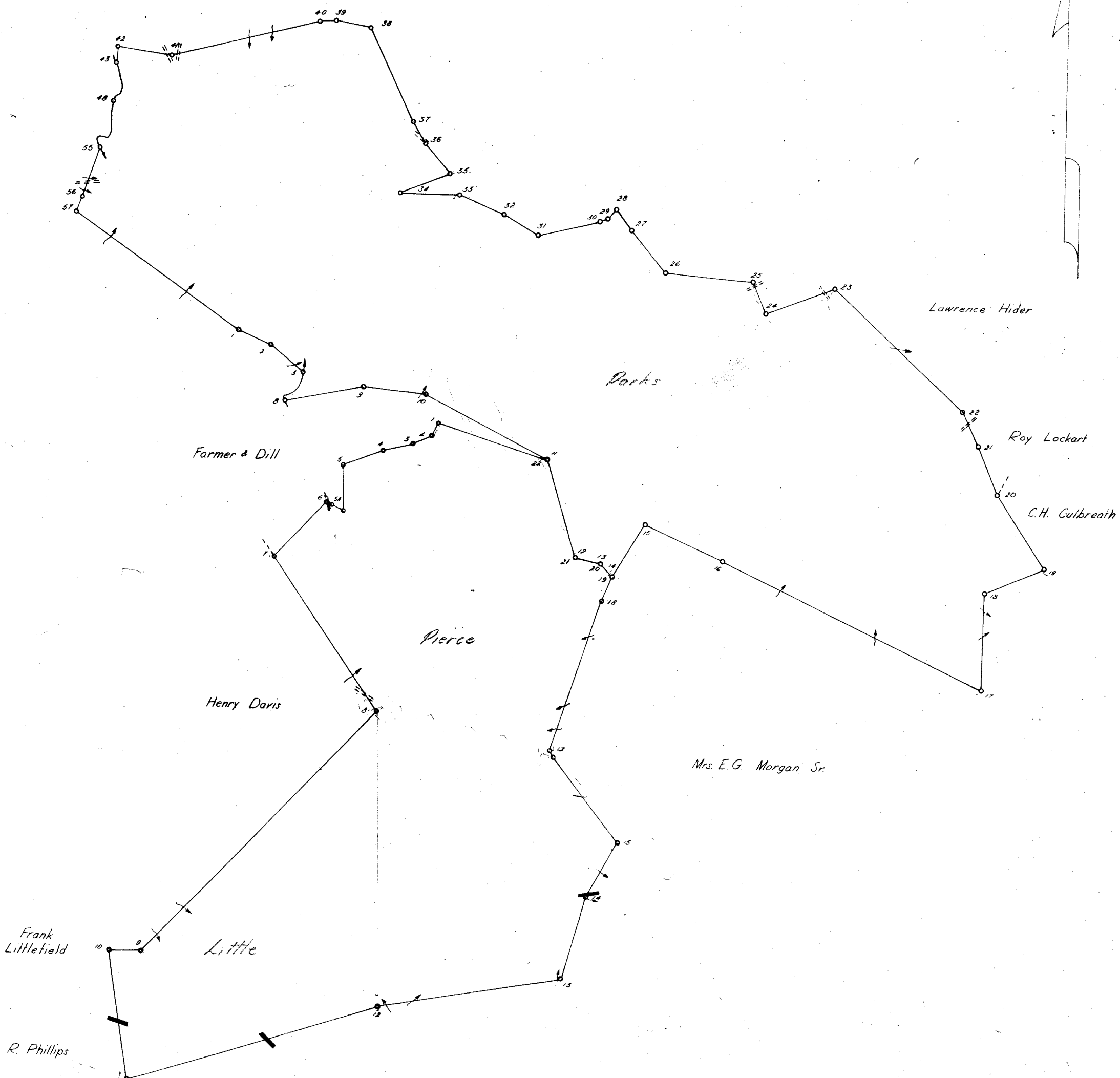
1	567	OSE	7.28	Hick X/O.M. Hick # Pine #
2	570	45E	3.47	Iron N.M. on E Side of Rd. R.Gums #
3	575	00W	2.77	Cor in Br. Popl # Pine #
4	549	30W	1.91	Pt in Br
5	563	00W	1.03	" "
6	547	45W	1.02	" "
7	547	00E	1.02	Cor in Br. Twin Poplars #
8	N79	30E	16.30	Iron N.M. on E Bank of Br. Pool # Pine #
9	563	10E	12.73	Chestnut X/O.M. Pines #
10	577	35E	27.65	Stk O.M. Iron N.M. Dogwood # Oak #
11	577	15E	20.20	Common Cor for Parcel A & B
12	547	15E	3.70	" "
13	N31	40E	12.48	Rock O.M. Twin Oaks #
14	565	20E	17.22	Rock O.M. Hick # Oak #
15	565	20E	58.47	Rock O.M. R.O. # Sourwood #
16	N00	55E	19.48	Iron N.M. on E Bank of Br. Poplars #
17	N67	45E	12.59	Hick # Stump O.M. Rock N.M. Hick # Maple #
18	N32	30W	17.80	Iron N.M. R.O. # Wh O #
19	N23	25W	10.29	Rock O.M. Pine # R.O. #
20	N25	10W	7.61	Rock O.M. Red Oak # Near Spring
21	N48	05W	35.50	Rock O.M. Pines #
22	568	30W	14.78	Rock O.M.
23	N25	00W	7.08	Stake N.M.
24	N85	30W	17.54	Rock O.M. Hick # Locust #
25	N39	35W	11.02	Rock O.M. Bl Gum # Chestnut Oak #
26	N38	20W	5.52	Rock O.M. Popl # Wh O #
27	547	30W	2.52	Rock O.M. Oaks #
28	573	30W	1.67	Rock O.M. Chestnut Oak # Hick #
29	575	40W	13.00	Locust X/O.M. Hickory #
30	N59	20W	8.12	Locust Stump O.M. Hick # Chestnut Oak #
31	N68	35W	9.49	Hick # O.M. Hicks #
32	539	45W	12.08	Iron N.M. Hicks #
33	N65	00E	10.92	Rock N.M. on E Bank of Br. Twin Popl # Dogwood #
34	N41	25W	7.61	Iron N.M. on S Bank of Ed. Hick # Bl Oak #
35	N28	15W	5.20	Iron N.M. on S Bank of Ed. Chestnut Oak # Maple #
36	N25	45W	20.68	Iron O.M. Iron N.M. Poplars #
37	N79	20W	7.15	Stk N.M. at Edge of Rock Cliff Chestnut Oak #
38	584	00W	5.12	Rock N.M. at Chestnut Stump Hick # Ch O #
39	576	00W	31.10	Rock N.M. Locust #
40	N79	45W	10.90	Dogwood # C.M. Dogwoods #
41	507	10W	3.36	Iron N.M. on Cliff Hick # Pine #
42	518	00E	2.44	Cor in Center of Ed. Maple #
43	512	45E	1.65	Pt in Br
44	518	00W	1.65	" "
45	571	00W	1.04	" "
46	520	00W	1.04	" "
47	585	10W	3.57	" "
48	503	30W	1.78	" "
49	520	30W	2.20	" "
50	N83	00W	1.83	" "
51	539	30W	1.75	" "
52	520	30E	1.96	" "
53	541	00E	1.33	" "
54	519	45W	10.33	Cor in Br. Elm #
55	519	45W	3.20	Rock O.M.
56	555	30E	40.35	Iron N.M. Popl # Hick #
57				

Parcel B

1	527	00W	2.47	Stk O.M. Iron N.M. Hick #
2	564	05W	4.34	Iron N.M. Rock O.M. Ch. Oaks #
3	577	40W	6.25	Iron N.M. Rock X/O.M. Ch. Oaks #
4	568	30W	3.40	Iron N.M. Rock X/O.M. Locust # Hick #
5	502	30E	9.20	Rock O.M. Iron N.M. Maple # Ch O #
5A	N63	40W	2.73	Rock N.M. Hick # S.O. #
5B	N70	45W	1.36	Rock O.M. Poplars #
6	542	30W	14.90	Rock X/O.M. Near Br. Dogwood # Popl #
7	535	30E	38.71	Bl Oak # O.M. on Wh Top Locust # Hick #
8	543	30W	67.51	Rock O.M. Iron N.M. Near Rd. Pines #
9	589	30W	6.38	Rock O.M. Iron N.M. Near Rd. Pines #
10	509	05E	25.99	Popl Stump O.M. Iron N.M. Near Rd. Pines #
11	N71	45E	53.76	Rock # Locust Stk O.M. Iron N.M. Pines #
12	N82	00E	37.89	Iron # Rock X/O.M. R.O. # R.G. #
13	N16	35E	17.78	Rock N.M. at Rock Furnace Near Br. Wh O # Popl #
14	N27	00E	12.90	Twin Pool on S Side of Co Rd # N Side of Ch Pops #
15	N39	00W	21.42	Rock N.M. Wh O # Ch O #
16	N21	20W	1.31	Rock N.M. Pines #
17	N18	00E	31.89	Rock N.M. Dogwood # R Gum #
18	N23	15E	5.20	Lg Popl Stump X/O.M. Rock N.M. Poplars #
19	N47	15W	3.70	Common Cor for Parcel A & B
20	N77	35W	5.40	" "
21	N17	15W	20.20	" "
22	N72	55W	23.04	" "

NOTE: This Plat Supercedes All Previously Dated Maps.

17757 Filed This 8 day of Nov. 1962
 And Recorded in Vol. 76 Page 91 at
 Register Mesne Conveyance Greenville County, S. C.



Parks - 1024.13 acres
 Pierce - 502.89 "
 Little - 207.01 "
 Total - 1734.03 acres

FILED
 GREENVILLE CO. S. C.
 NOV 8 1 57 PM 1962
 OLLIE FARNSWORTH
 R. M. C.

THE CHAMPION PAPER & FIBRE COMPANY

NEWBERRY, S. C.
 Little - Pierce - Parks
 #1228 - 1253 - 1123
 Greenville County

Acres 1734.0 Scale: 1 in. = 20 chs.

Map by: E.L.O. Date: 5-30-51 Traced by: R.K. Supervised by: J. Yavorski Date: 8-29-57
 Lic. #1032

NOV 8 1962 12257
 200
 7X - 91