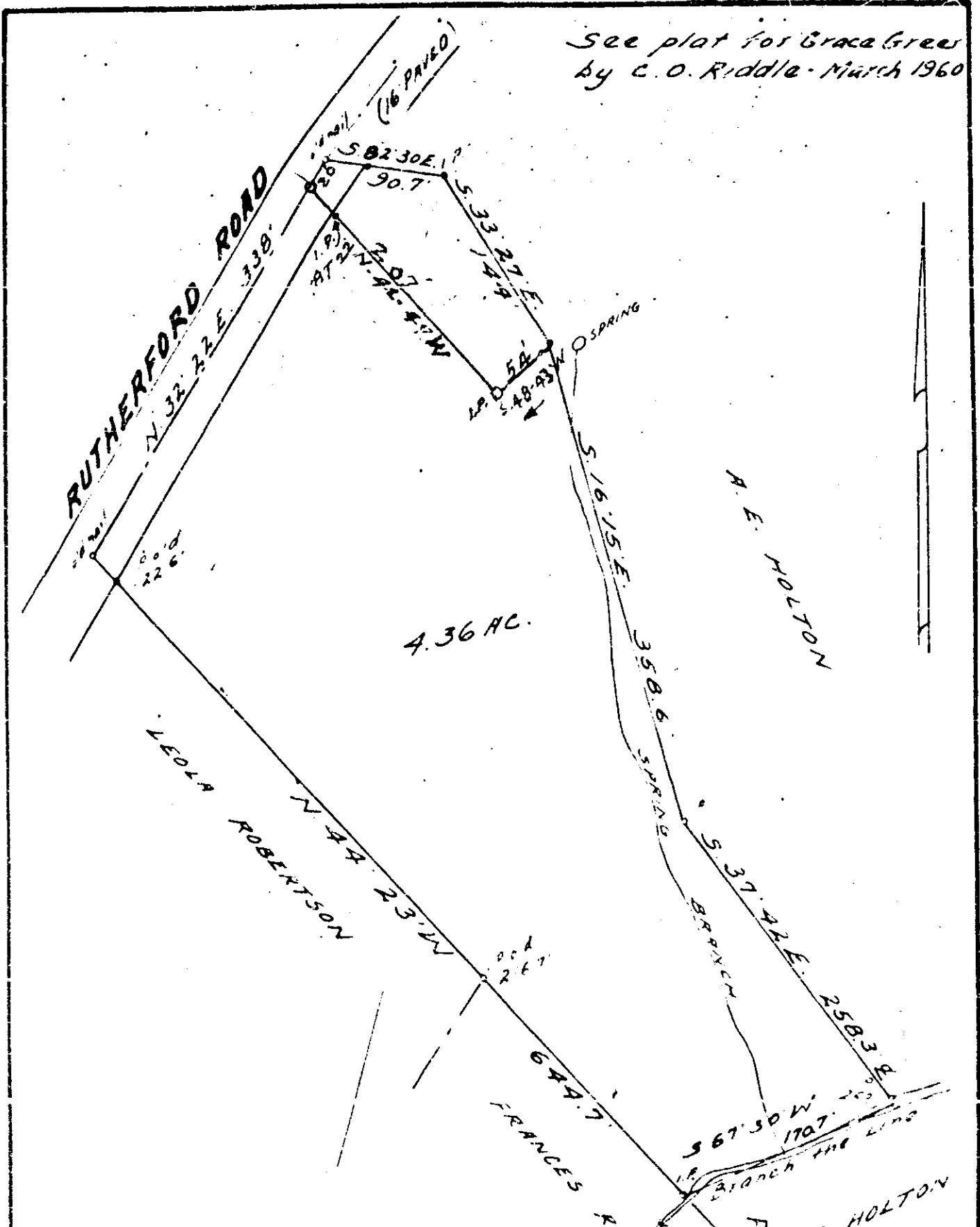


See plat for Grace Green  
by C. O. Riddle - March 1960



SURVEY FOR  
**W. W. TROTTER**  
Being Deeded By  
A. E. HOLTON  
3 MI ± N.W. OF  
**CHICK SPRINGS**

GREENVILLE CO. - S.C.  
Scale 1" = 100' - April 1, 1961  
W. N. WILLIS - Engrs.  
Spartanburg - S.C. WW-717

A. E. HOLTON  
GILIEE F. SMITH  
H.M.C.  
FEB 15 3 12 PM 1962  
GREENVILLE CO. S.C.  
FILED

FEB 15 1962

20253

100