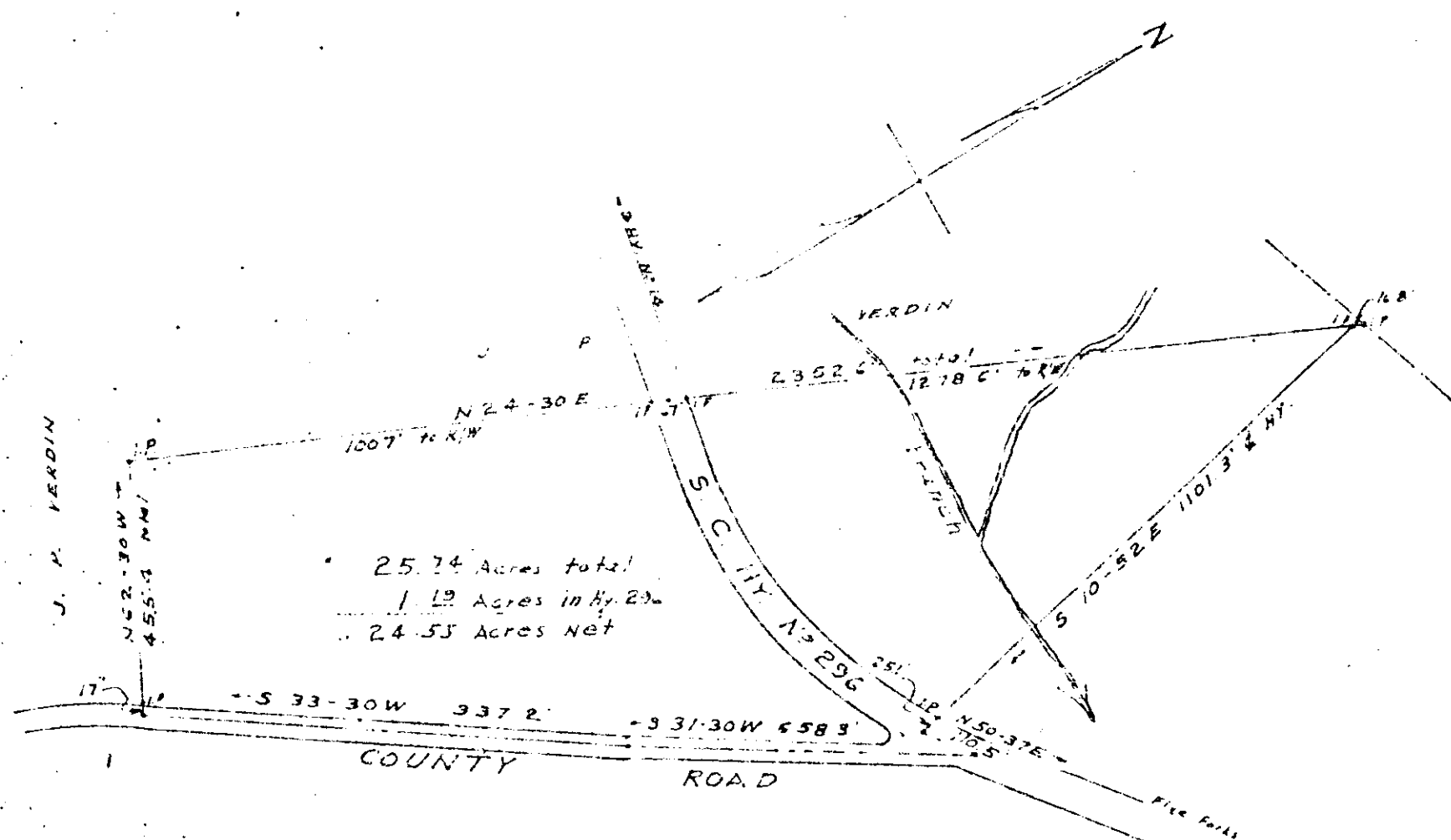


# Plat Book WW, Page 197



25.74 Acres total  
 1.19 Acres in H. 296  
 24.55 Acres Net

Recorded December 20, 1961 at  
 12:36 P. M. #15610

FILED  
 GREENVILLE CO. S. C.  
 DEC 20 12 36 PM 1961  
 OLLIE L. B. WORTH  
 C.M.G.

DEC 20 1961

15610 PROPERTY OF  
 CLARENCE H. & ALMA MESSER  
 GREENVILLE COUNTY S. C.  
 SCALE 1" = 300' MAR 31 1958

108  
 Picture  
 Rt 1  
 3/4 mile