

Plat Book WW, Page 41

N 1/2 CITIZEN RAILROAD GRAN OPEN S

PROPERTY OF WASKELL MILTON GEORGE

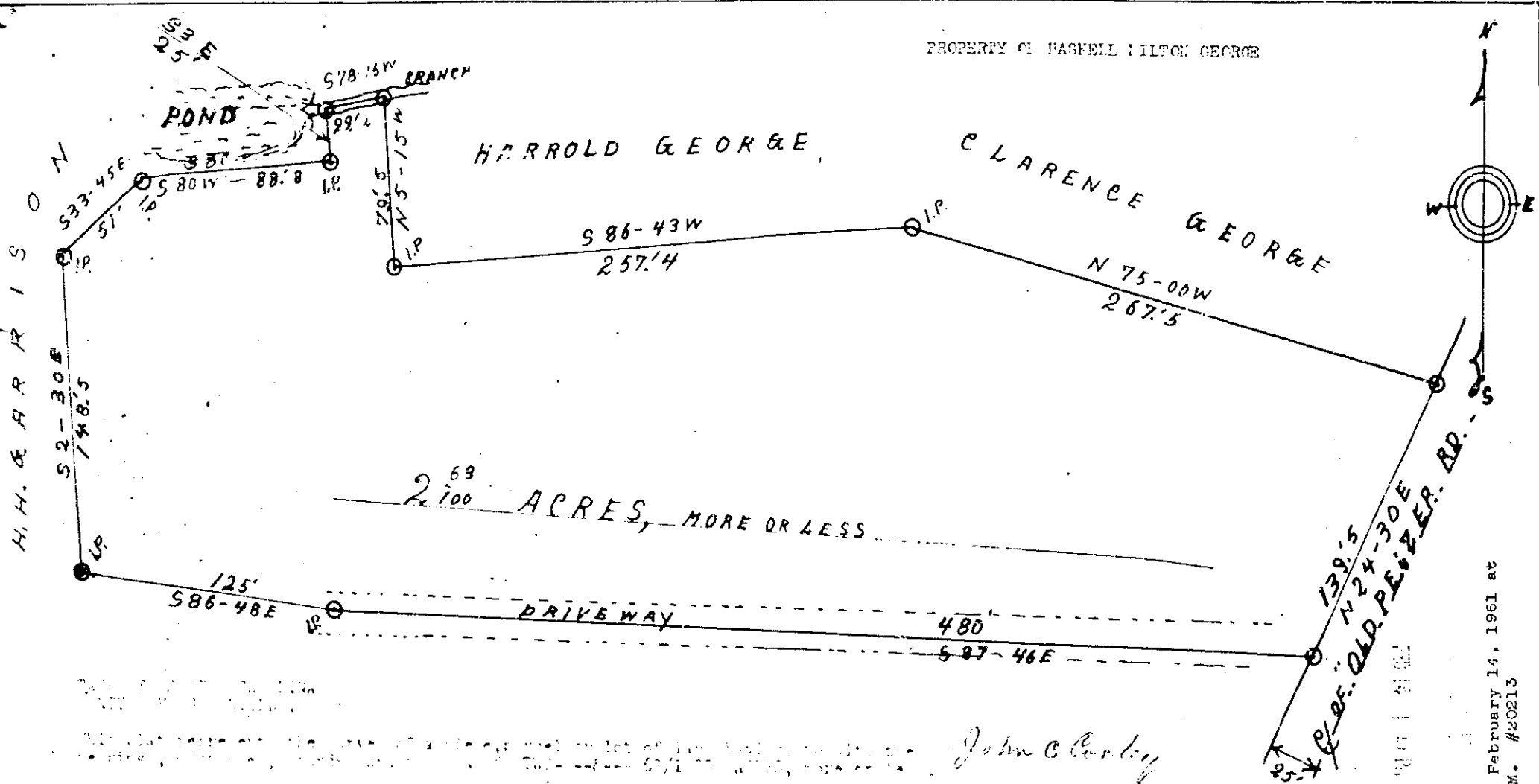
HARROLD GEORGE

CLARENCE GEORGE

2.63
2.100 ACRES, MORE OR LESS

DRIVEWAY

139.5
N 24-30E
P. OF OLD PEPPER BR. RR.



John C. Carley

FEB 14 1961

20213

Esq. C. E. ...

SCALE 1" = 50'

Recorded February 14, 1961 at
1:59 P. M. #20213