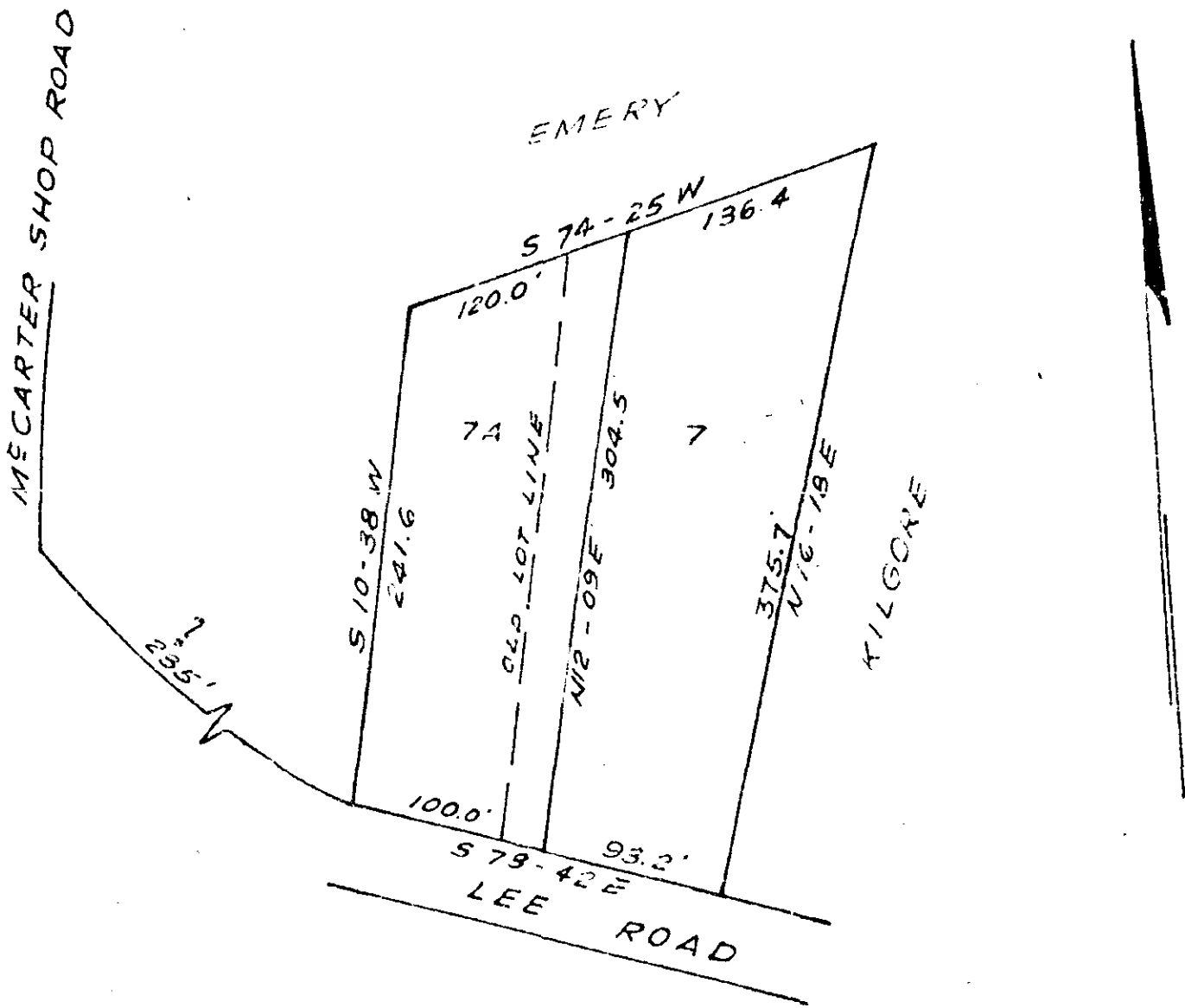


REF. PLAT BOOK PAGE



SURVEY FOR
CLYDE H. HOWARD
NEAR GREENVILLE, S.C.
SCALE 1" = 100' JULY 1960
SURVEY BY R.B. BRUCE R.L.S. 1952

AUG 10 1961

4020

See 504.

4:02 P.M. VV - 173

4020 Filed This 10 day of Aug - 1961
and Recorded in Vol. VV Page 173 at

Edna J. Jansworth
Register-Maple Land Office, Greenville County, S.C.