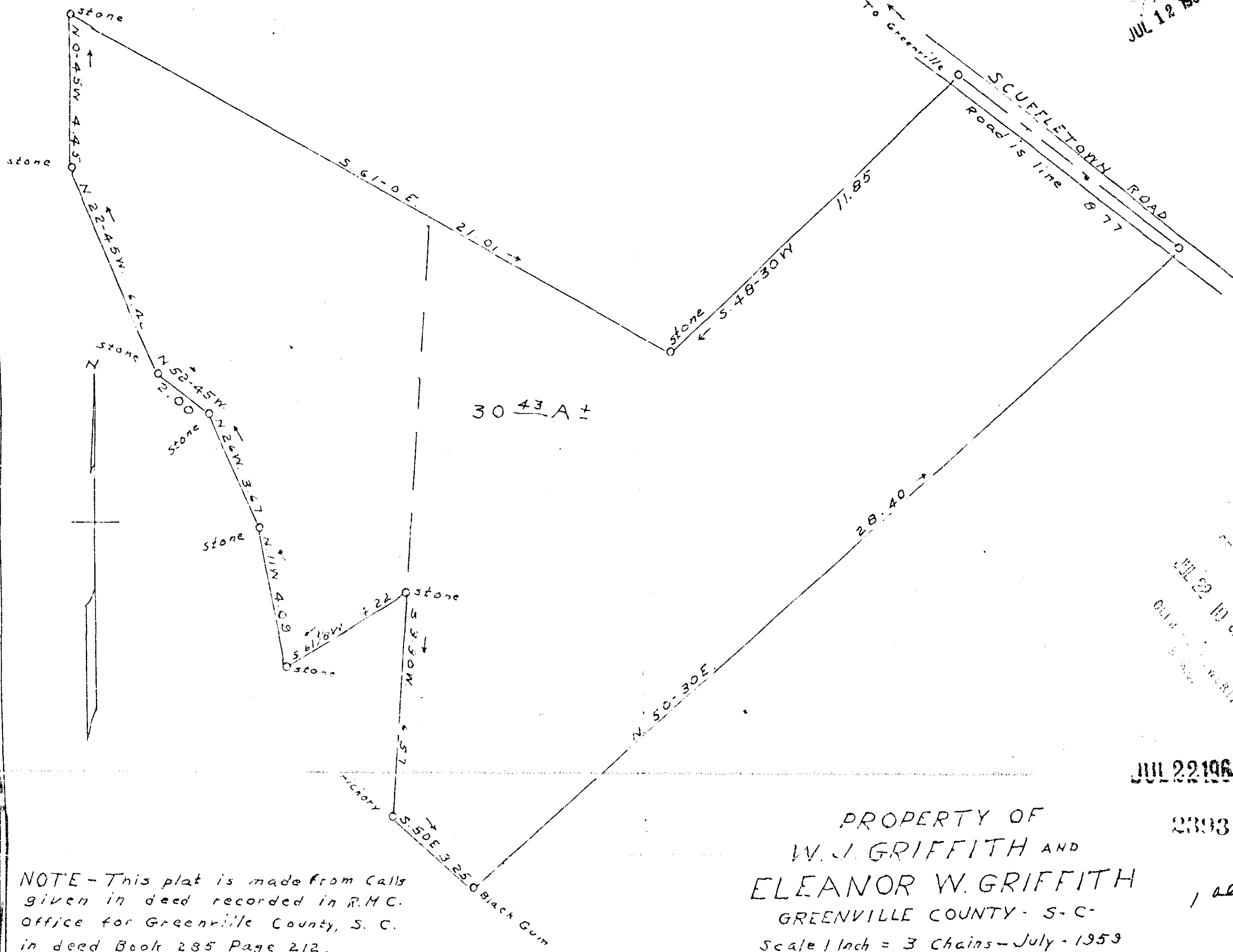


Application No. 209048  
 Walter J. Griffith and Eleanor W. Griffith

JUL 12 1961



JUL 22 10 00 AM 1961  
 GREENVILLE COUNTY, S. C.

JUL 22 1961

PROPERTY OF  
 W. J. GRIFFITH AND  
 ELEANOR W. GRIFFITH  
 GREENVILLE COUNTY - S. C.  
 Scale 1 Inch = 3 Chains - July - 1959

2393

1 or

VV - 142

NOTE - This plat is made from calls given in deed recorded in R.M.C. Office for Greenville County, S. C. in deed Book 285 Page 212.

Plated by W. J. Riddle.

2393. Read the 22nd of July 1961  
 And Recorded in VV - 142  
 Register House (Greenville County, S. C.)