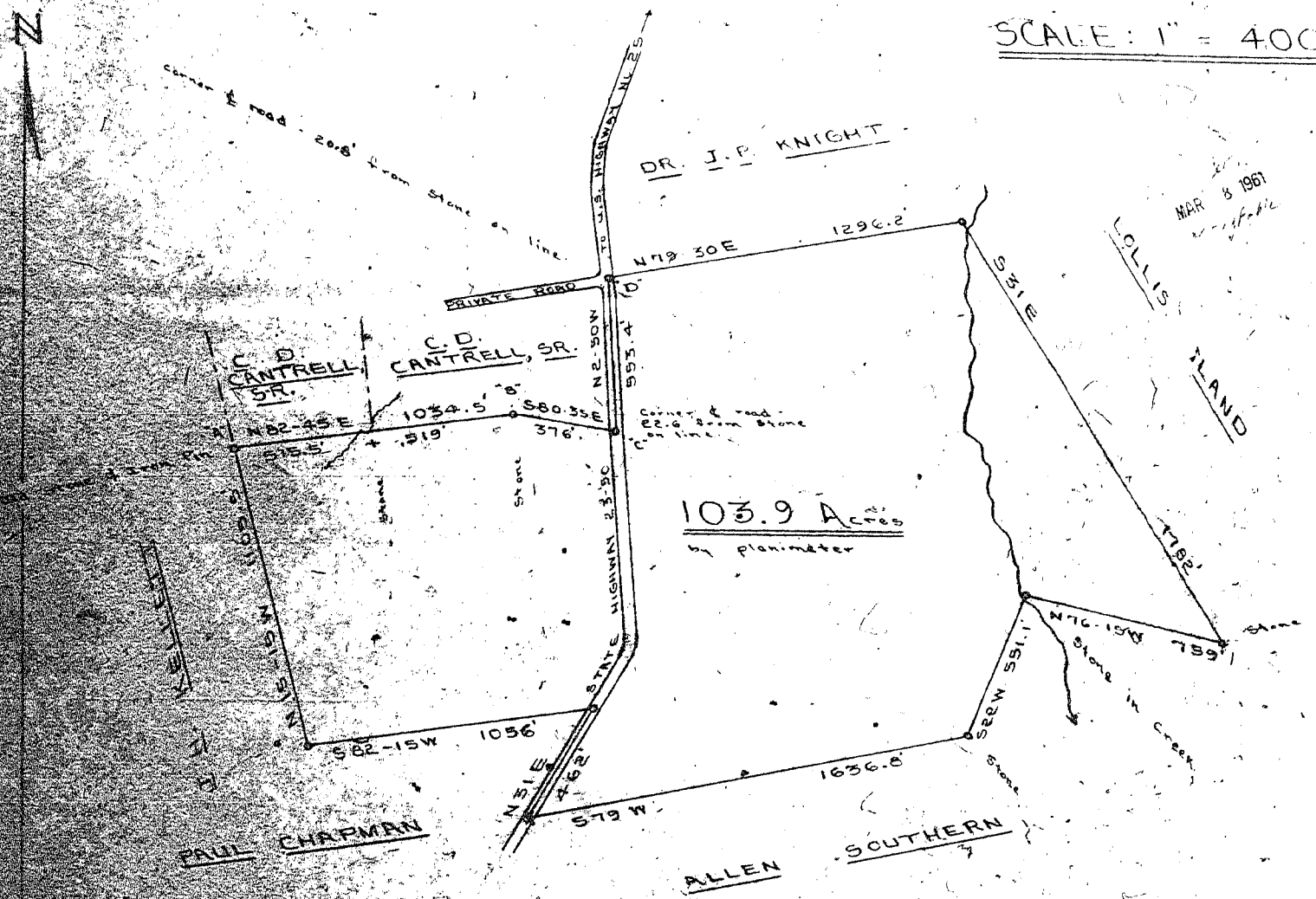


JACK W. CANTRELL

SCALE: 1" = 400'



103.9 Acres  
by planimeter

Greenville County  
 A tract of land located on State Highway No. 23-50 about 2 miles  
 west of Highway No. 25. Said tract contains One Hundred Three and Nine-  
 tenths (103.9) Acres, more or less, and conveyed to Jack W. Cantrell from his  
 father C. Cantrell, Sr.  
 The tract from A to B, B to C, and C to D, surveyed July 23, 1951. - All other lines take  
 from a plat to Cantrell, recorded in the R.M.C. office for Greenville  
 in Vol. 308 at page 32.

Thomas J. Leslie, Reg. Surveyor.  
 by F.E.R. - July 23, 1951.

VV-63