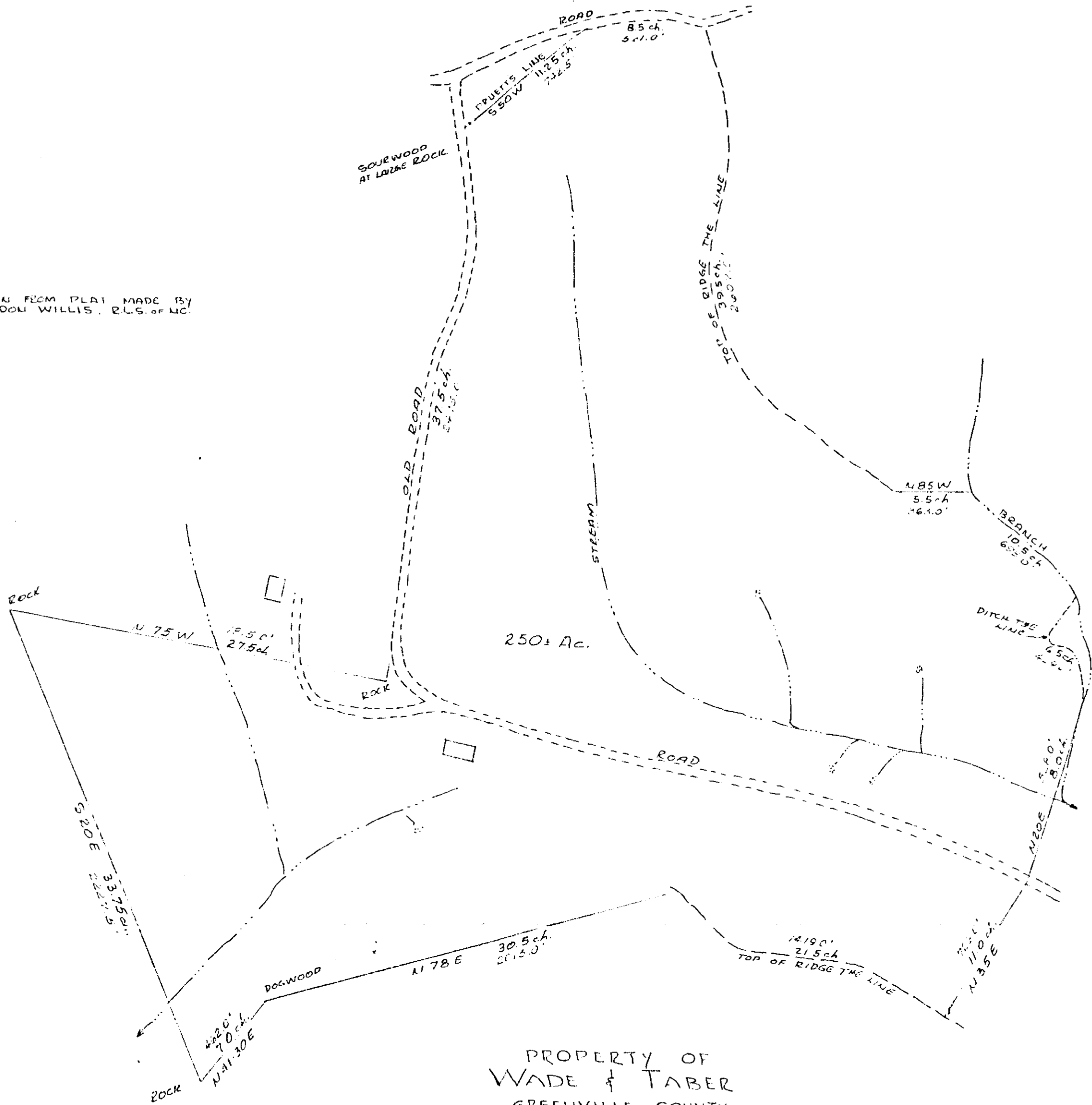


# Plat Book TT, Page 27

DRAWN FROM PLAT MADE BY  
WELDON WILLIS, R.L.S. OF NC.



PROPERTY OF  
WADE & TABER  
GREENVILLE COUNTY  
Scale 1"=400' AUG. 1959

TT-27

7416  
Plat No. 3  
Filed for Record in Vol. TT, Page 27, 1959  
W. W. Willis  
Registered Professional Surveyor, Greenville County, S. C.

SEP 3 5 03 PM 1959

SEP 3 1959

7116

1.00