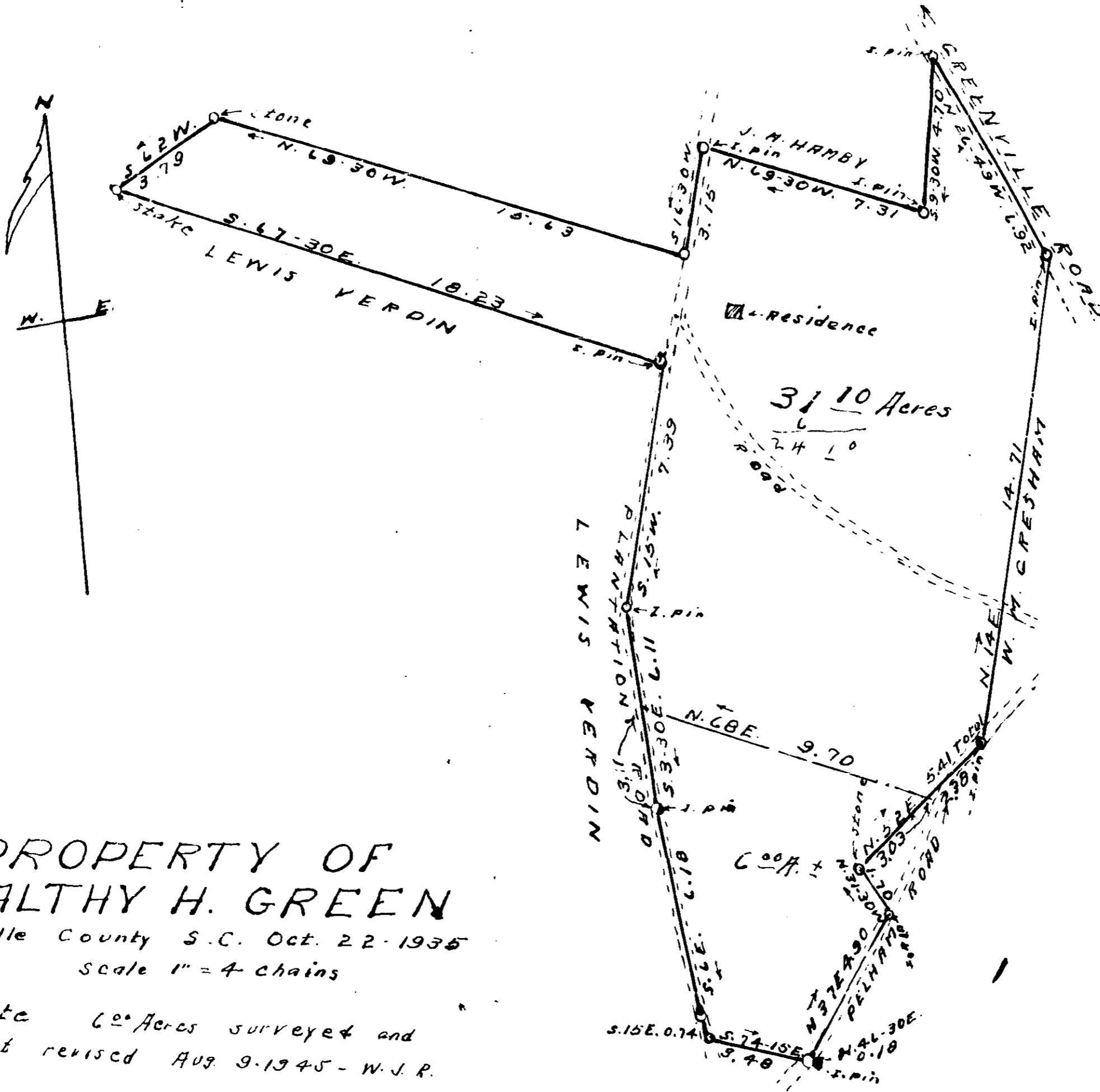


Plat Book SS, Page 199A



PROPERTY OF
WEALTHY H. GREEN
 Greenville County S.C. Oct. 22-1935
 Scale 1" = 4 chains

Note 60 Acres surveyed and
 Plat revised Aug. 9-1945 - W.J.R.

JUL 22 1959

501

SS-199

2699

surveyed and plated by W.J. Riddle

FILED
 GREENVILLE S.C.
 JUL 22 1959

Handwritten: 60 Acres
 and Recorded in Vol. 58 Page 199 at
 W.J. Riddle
 Register Mesne Conveyance Greenville County, S.C.